

## Excellent Integrated System Limited

Stocking Distributor

Click to view price, real time Inventory, Delivery & Lifecycle Information:

[Harting](#)

[09651616711](#)

For any questions, you can email us directly:

[sales@integrated-circuit.com](mailto:sales@integrated-circuit.com)

5

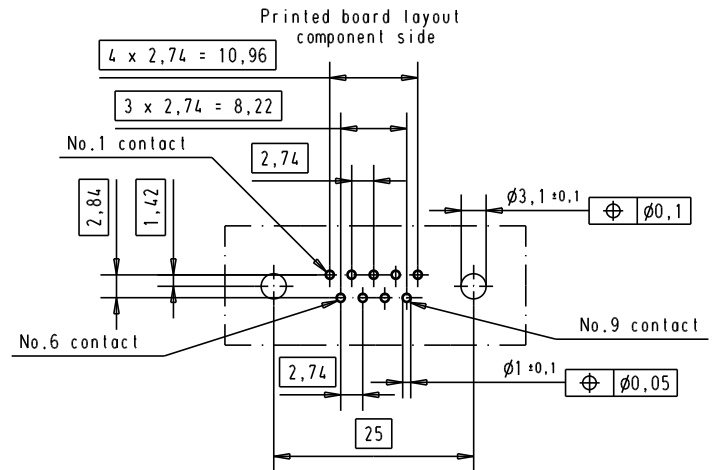
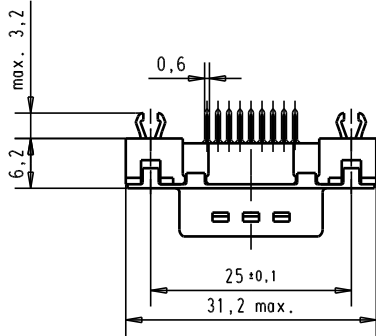
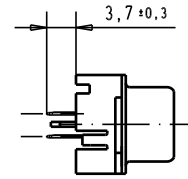
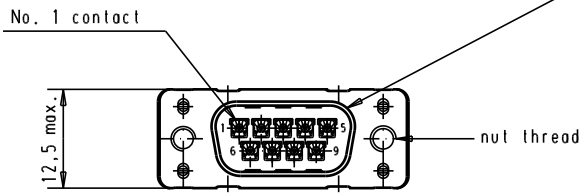
4

3

2

1

Mating face according to : MIL-C-24308 / DIN 41652 / CECC 75301-802



Connector retention and insertion forces on the PCB = 25 / 80 newtons

09 65 161 3711	M3	1					Det.	Name	 All Dim. in mm Orig. Size DIN A 4	D-Sub, 9 poles, male, straight, with solder pins 3.7, nuts and grounding board lock	Maßstab/ Scale 1,5:1
09 65 161 6711	M3	2				Detail.	05/03/02	CV			
09 65 161 7711	M3	3				Insp.				TB 09 65 161 x71x	Blatt / Page 1 /
09 65 161 3712	4-40 UNC	1	31892	22/04/04	JH	Stand.					
09 65 161 6712	4-40 UNC	2	31523	11/07/03	TCP	HARTING EURL		F-95972 Paris	Sub.	TB 09 65 161 x71x	1 /
09 65 161 7712	4-40 UNC	3	29723	05/03/02	CV	HARTING EURL					
Part number	Nut thread	Performance level	Mod.	Det.	Name	HARTING EURL		F-95972 Paris	Sub.	TB 09 65 161 x71x	1 /