

Excellent Integrated System Limited

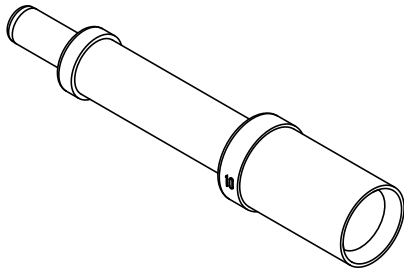
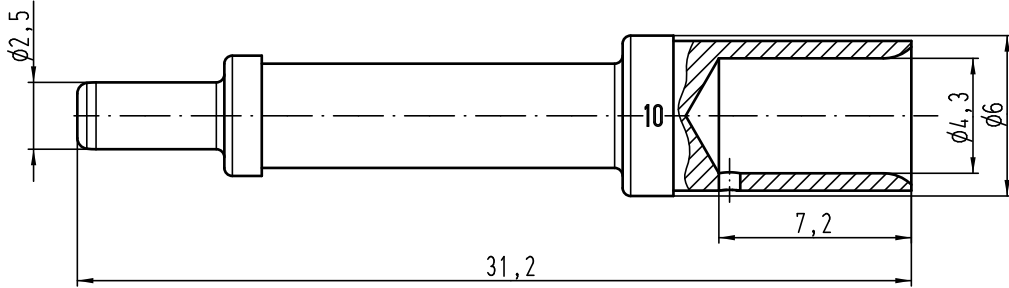
Stocking Distributor

Click to view price, real time Inventory, Delivery & Lifecycle Information:



[Harting](#)
[11000009510](#)

For any questions, you can email us directly:
sales@integrated-circuit.com

Alle Rechte vorbehalten/ All rights reserved



Leiterquerschnitt/ *wire gauge*: 10mm² / AWG 8
 Abisolierlänge der Litze/ *stripping length*: 7,5
 Oberfläche/ *surface*: versilbert/ *silver plated*

 All Dimensions in mm Original Size DIN A 4			Techn. Character.			Nicht tolerierte Maße/ <i>Free size tolerances</i>											
			<table border="1"> <tr> <td>Detail.</td> <td>28.03.11</td> <td>Ho</td> </tr> <tr> <td>Insp.</td> <td></td> <td>SP</td> </tr> <tr> <td>Stand.</td> <td></td> <td></td> </tr> </table>	Detail.	28.03.11	Ho	Insp.		SP	Stand.				Maßstab/ <i>Scale</i> 5:1	Stiftkontakt-PE <i>male contact-PE</i>		
Detail.	28.03.11	Ho															
Insp.		SP															
Stand.																	
A																	
Mod.	Dat.	Name	HARTING Electric GmbH & Co. KG D-32339 Espelkamp					TB 11 00 000 9510 Sub.	Blatt/ <i>page</i> /								