

Excellent Integrated System Limited

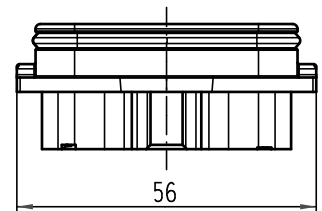
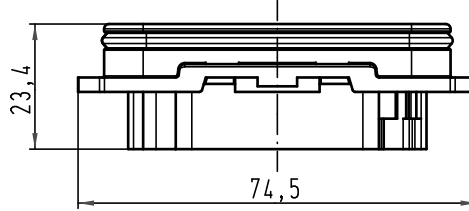
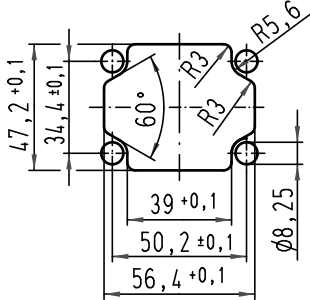
Stocking Distributor

Click to view price, real time Inventory, Delivery & Lifecycle Information:

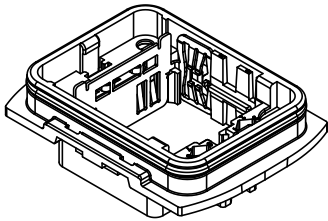
[Harting](#)
[11123000302](#)


For any questions, you can email us directly:
sales@integrated-circuit.com

Montageausschnitt/
panel cut out
(1:2)



Lieferumfang: Anbaugeschütz mit Flachdichtung und Wanddübeln/
range of delivery: housing bulkhead mounting with gasket and wall-plugs



All Dimensions in mm Original Size DIN A 4			Techn. Character.			Nicht tolerierte Maß/Free size tolerances	
				Dat.	Name	Maßstab/Scale 1:1	Han-Yellock 30- Anbaugeschütz/ housing bulkhead mounting
			Detail.	28.04.10	Ho		
			Insp.		SP		
			Stand.				
A			HARTING Electric GmbH & Co. KG				TB 11 12 300 0302
Mod.	Dat.	Name	D-32339 Espelkamp				