

Excellent Integrated System Limited

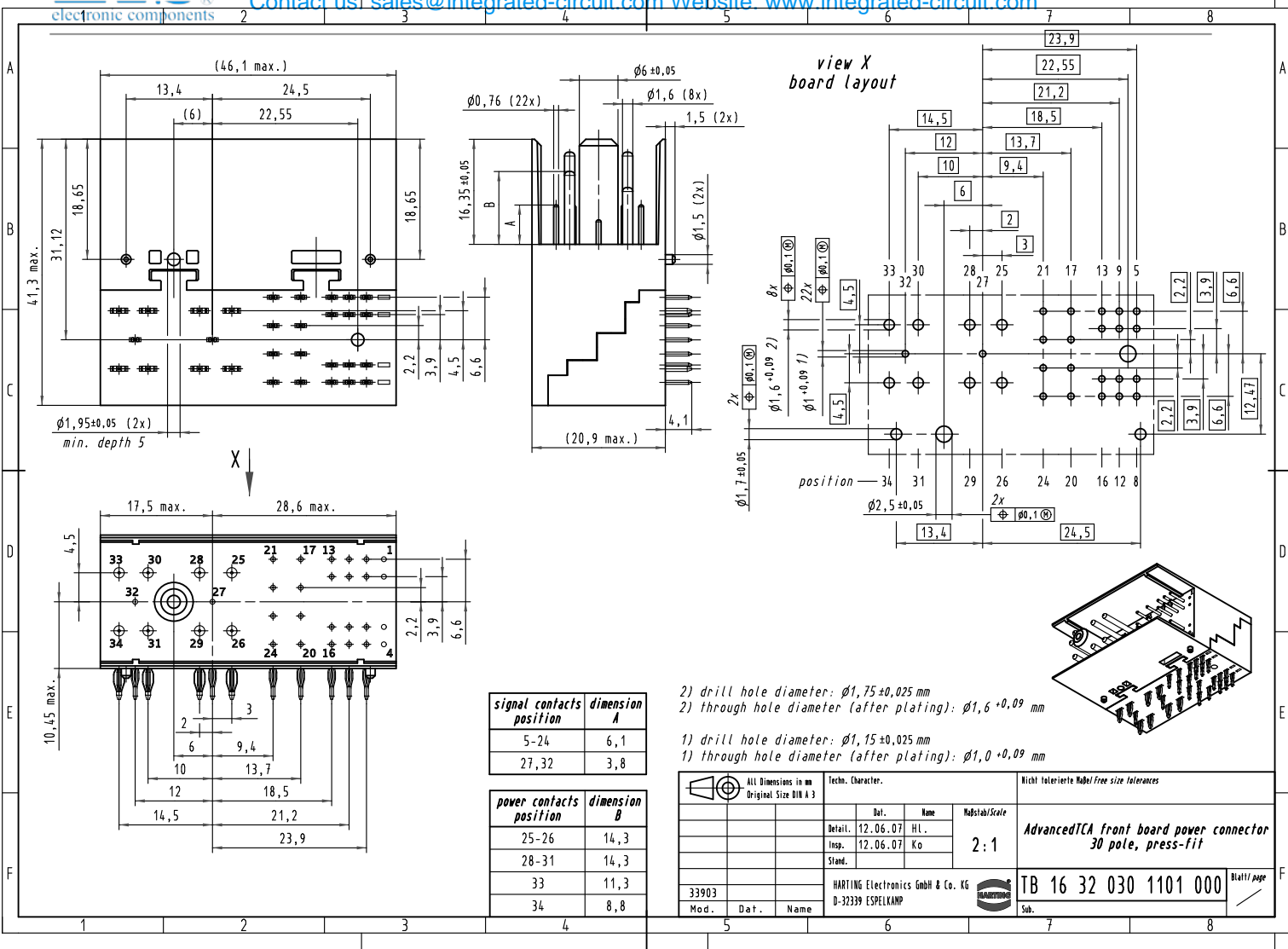
Stocking Distributor

Click to view price, real time Inventory, Delivery & Lifecycle Information:

[Harting](#)
[16320301101000](#)

For any questions, you can email us directly:
sales@integrated-circuit.com

Alle Rechte vorbehalten. All rights reserved



signal contacts position	dimension A
5-24	6,1
27,32	3,8

power contacts position	dimension B
25-26	14,3
28-31	14,3
33	11,3
34	8,8

- 2) drill hole diameter: $\phi 1,75 \pm 0,025$ mm
- 2) through hole diameter (after plating): $\phi 1,6 \pm 0,09$ mm
- 1) drill hole diameter: $\phi 1,15 \pm 0,025$ mm
- 1) through hole diameter (after plating): $\phi 1,0 \pm 0,09$ mm

All Dimensions in mm Original Size DIN A 3		Techn. Character.			Nicht tolerierte Maß/Free size tolerances	
Mod.	Dat.	Bel.	Name	Maßstab/Scale	AdvancedTCA front board power connector 30 pole, press-fit	
33903		Detail: 12.06.07	Hl.	2:1		
		Insp. 12.06.07	Ko			
		HARTING Electronics GmbH & Co. KG D-32339 ESPELKAMP			Blatt/ page	
					Sub.	

