



Distributor of Keystone Electronics: Excellent Integrated System Limited

Datasheet of 1439-3 - JACK .032-.046" .355"L SWAGE SN

Contact us: [sales@integrated-circuit.com](mailto:sales@integrated-circuit.com) Website: [www.integrated-circuit.com](http://www.integrated-circuit.com)

---

## Excellent Integrated System Limited

Stocking Distributor

Click to view price, real time Inventory, Delivery & Lifecycle Information:

[Keystone Electronics](#)

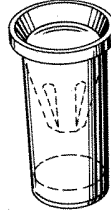
[1439-3](#)

For any questions, you can email us directly:

[sales@integrated-circuit.com](mailto:sales@integrated-circuit.com)

# MICRO JACKS

- Precision engineered, "closed entry" contacts
- Space saving design for high density packaging
- Micro jacks are available for mating with .015 to .082 diameter pins and leads
- Beryllium Copper multi-spring contact maintains retention after multiple insertions
- Ideal for mounting transistors, resistors, diodes, IC's and similar miniature components
- Available for press-fit, swage or solder mounting
- Sizes for .032, .062, .093 and .125 thick PC boards
- Custom micro jacks manufactured to your specifications
- Other platings available upon request



**SPECIFICATIONS**

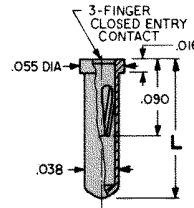
Body: Brass, ASTM-B16

Spring: Beryllium Copper (OO-C-533)

Plating: Gold: .000010 per MIL-G-45204, Type II

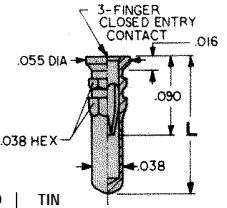
Tin: .000200 to .000300 per MIL-T-10727, Type 1

**For .015 - .021 Pin - SOLDER MOUNT**



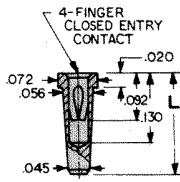
GOLD PLATED CAT. NO.	TIN PLATED CAT. NO.	"L" Lgth	Mounting Hole .040 Dia.
1411-1	1431-1	.140	
1411-2	1431-2	.170	

**For .015 - .021 Pin - PRESS-FIT**



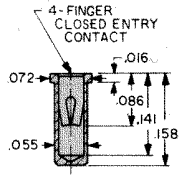
GOLD PLATED CAT. NO.	TIN PLATED CAT. NO.	"L" Lgth	Mounting Hole .040 Dia.
1412-1	1432-1	.140	
1412-2	1432-2	.170	
1412-3	1432-3	.282	

**For .015 - .025 Pin - TAPER-FIT**



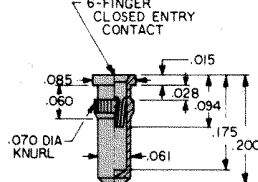
GOLD PLATED CAT. NO.	TIN PLATED CAT. NO.	"L" Lgth	Mounting Hole .055 Dia
1415-1	1435-1	.160	
1415-2	1435-2	.190	

**For .015 - .025 Pin - SOLDER MOUNT**



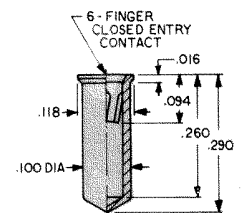
CAT. NO. 1413 - Gold Plate  
CAT. NO. 1433 - Tin Plate

**For .022 - .034 Pin - PRESS-FIT**



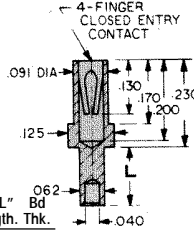
CAT. NO. 1416 - Gold Plate  
CAT. NO. 1436 - Tin Plate

**For .040 - .050 Pin - SOLDER MOUNT**



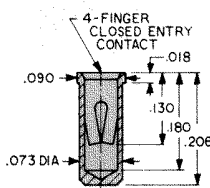
CAT. NO. 1418 - Gold Plate  
CAT. NO. 1438 - Tin Plate

**For .032 - .046 Pin - SWAGE MOUNT**



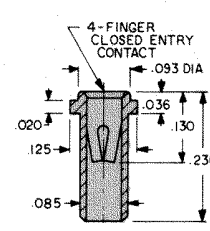
GOLD PLATED CAT. NO.	TIN PLATED CAT. NO.	"L" Lgth.	Bd Thk.	Mounting Hole .067 Dia
1419-1	1439-1	.062	.032	
1419-2	1439-2	.094	.062	
1419-3	1439-3	.125	.093	
1419-4	1439-4	.156	.125	

**For .032 - .046 Pin - SOLDER MOUNT**



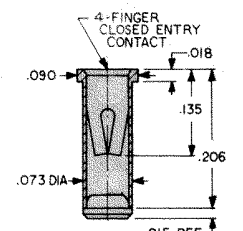
CAT. NO. 1417 - Gold Plate  
CAT. NO. 1437 - Tin Plate

**For .032 - .046 Pin - SOLDER MOUNT**



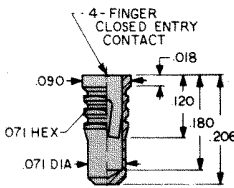
CAT. NO. 1414 - Gold Plate  
CAT. NO. 1434 - Tin Plate

**For .032 - .046 Pin - SOLDER MOUNT**



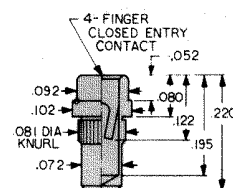
CAT. NO. 1441 - Gold Plate  
CAT. NO. 1444 - Tin Plate

**For .032 - .046 Pin - PRESS-FIT**



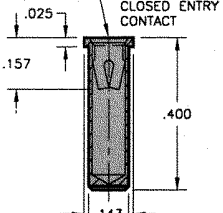
CAT. NO. 1442 - Gold Plate  
CAT. NO. 1445 - Tin Plate

**For .032 - .046 Pin - PRESS-FIT**



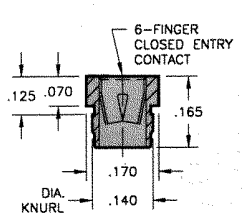
CAT. NO. 1443 - Gold Plate  
CAT. NO. 1446 - Tin Plate

**For .065 - .082 Pin - SOLDER MOUNT**



CAT. NO. 1641A - Gold Plate  
CAT. NO. 1641B - Tin Plate

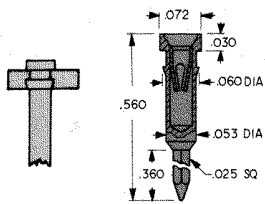
**For .084 - .102 Pin - PRESS-FIT**



CAT. NO. 1640A - Gold Plate  
CAT. NO. 1640B - Tin Plate

**IC SOCKET CONTACTS - For .015 - .025 Leads**

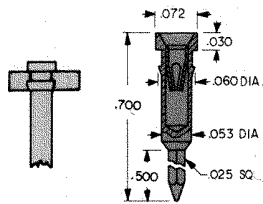
Retains .016 to .022 Dia. Leads.  
4 Finger Contacts.



CAT. NO. 3501 - Gold Plate  
CAT. NO. 3505 - Tin Plate

**IC SOCKET CONTACTS - For .015 - .025 Leads**

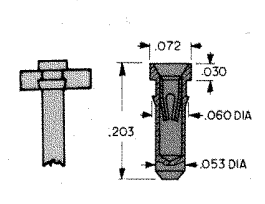
Retains .016 to .022 Dia. Leads.  
4 Finger Contacts.



CAT. NO. 3502 - Gold Plate  
CAT. NO. 3506 - Tin Plate

**IC SOCKET CONTACTS - For .015 - .025 Leads**

Retains .016 to .022 Dia. Leads.  
4 Finger Contacts.



CAT. NO. 3503 - Gold Plate  
CAT. NO. 3507 - Tin Plate