



Distributor of Molex Connector Corporation: Excellent Integrated System Limited

Datasheet of 0192670244 - 1/2 INCH HST WHITE LG 200' SPOOL

Contact us: sales@integrated-circuit.com Website: www.integrated-circuit.com

Excellent Integrated System Limited

Stocking Distributor

Click to view price, real time Inventory, Delivery & Lifecycle Information:

[Molex Connector Corporation](#)
[0192670244](#)

For any questions, you can email us directly:

sales@integrated-circuit.com



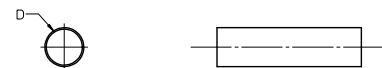
Distributor of Molex Connector Corporation: Excellent Integrated System Limited

Datasheet of 0192670244 - 1/2 INCH HST WHITE LG 200' SPOOL

Contact us: sales@integrated-circuit.com Website: www.integrated-circuit.com

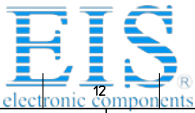
Table with columns for material number, engineering number, color (BLACK, WHITE, RED, BLUE, CLEAR, YELLOW, MIN, MAX, RECOVERED), and length. Rows are categorized by color and length (e.g., 4.0/1.2, 1000/304.8, 500/152.4).

SALES DRAWING



- NOTES:
1. MATERIAL: POLYOLEFIN
2. OTHER CUT LENGTHS ARE AVAILABLE.
3. PARTS ARE RoHS COMPLIANT.

Technical drawing metadata including: CHANGED TITLE, EC NO., DRAWING JASO1, CHKD: JACQUEL, APPR: JACQUEL, QUALITY SYMBOLS, GENERAL TOLERANCES, DIMENSION STYLE, SCALE 1:1, DESIGN UNITS INCH, THIRD ANGLE PROJECTION, TITLE POLYOLEFIN HEAT SHRINK TUBING 19267 SERIES, MOLEX INCORPORATED, DOCUMENT NO. SD-19267-001, SHEET NO. 1 OF 1.



Distributor of Molex Connector Corporation: Excellent Integrated System Limited

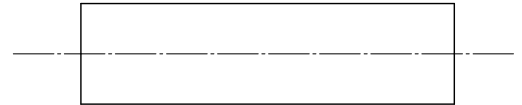
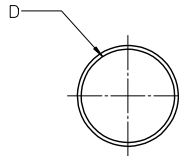
Datasheet of 0192670244 - 1/2 INCH HST WHITE LG 200' SPOOL

Contact us: sales@integrated-circuit.com Website: www.integrated-circuit.com

Table with columns: BLACK, WHITE, RED, CLEAR, YELLOW, MIN, MAX, RECOVERED WALL THK REF, LENGTH FEET/METERS. Rows include material numbers and engineering numbers for various part types.

Technical drawing area containing a circular symbol with a 'D' and a rectangular symbol, along with a detailed table of notes, dimensions, and tolerances.

	10	9	8	7	6	5	4	3	2	19269
	BLACK		CLEAR		MIN	MAX	RECOVERED	LENGTH		
F	MATERIAL NUMBER	ENGINEERING NUMBER	MATERIAL NUMBER	ENGINEERING NUMBER	EXPANDED ID "D"	RECOVERED ID	WALL THK REF	FEET/METERS		
	192690008	PF3-1/8-1BK			.125/3.018	.040/1.02	.038/0.97	4.0/1.2		
	192690013	PF3-3/16-1BK			.187/4.75	.060/1.52	.045/1.14			
			192690043	PF3-3/16-1CL	.225/5.72	.050/1.27	.045/1.14			
	192690018	PF3-1/4-1BK			.250/6.35	.080/2.03	.047/1.19			
			192690048	PF3-1/4-1CL	.293/7.44	.065/1.65	.047/1.19			
	192690023	PF3-3/8-1BK			.375/9.53	.120/3.05	.050/1.27			
			192690053	PF3-3/8-1CL	.427/10.85	.095/2.43	.050/1.27			
E	192690028	PF3-1/2-1BK			.500/12.70	.157/3.99	.055/1.40			
			192690058	PF3-1/2-1CL	.700/17.78	.175/4.45	.055/1.40			
	192690033	PF3-3/4-1BK			.750/19.05	.230/5.84	.065/1.65			
	192690038	PF3-1-1BK			1.000/25.40	.320/8.13	.075/1.90			



SALES DRAWING

NOTES:

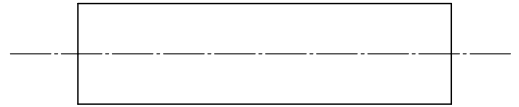
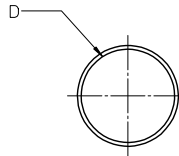
(A1)

1. MATERIAL: POLYOLEFIN WITH ADHESIVE LINER.
2. OTHER CUT LENGTHS ARE AVAILABLE.
3. PARTS ARE RoHS COMPLIANT.

(A1)

CORRECT MAT'L E.C. NO: IPG/2013-0982 DRAWN BY: JASOT 2013/01/10 CHKD: JACNETL 2013/01/10 APPR: JACNETL 2013/01/31 REV: A1	QUALITY SYMBOLS	GENERAL TOLERANCES (UNLESS SPECIFIED)		DIMENSION STYLE IN/MM		SCALE 1:1	DESIGN UNITS INCH	THIRD ANGLE PROJECTION
	▽=0 ▽=0	4 PLACES	± .---	± .---	DRAWN BY	DATE	(A1)	POLYOLEFIN W/ ADHESIVE LINER HEAT SHRINK TUBING 19269 SERIES
		3 PLACES	± .---	± .010	BENDERLE	2004/09/23		
		2 PLACES	± 0.25	± .02	CHECKED BY	DATE	DEROSS	2004/09/23
	1 PLACE	± 0.51	± .---	APPROVED BY	DATE	Molex INCORPORATED		
	ANGULAR ± .---		DRAFT WHERE APPLICABLE MUST REMAIN WITHIN DIMENSIONS		DEROSS	2004/09/23	SD-19269-001	SHEET NO. 1 OF 1
	SEE CHART		THIS DRAWING CONTAINS INFORMATION THAT IS PROPRIETARY TO MOLEX INCORPORATED AND SHOULD NOT BE USED WITHOUT WRITTEN PERMISSION					

BLACK		RED		MIN	MAX	RECOVERED	LENGTH
MATERIAL NUMBER	ENGINEERING NUMBER	MATERIAL NUMBER	ENGINEERING NUMBER	EXPANDED ID "D"	RECOVERED ID	WALL THK REF	FEET/METERS
192700008	PFB-04-1BK	192700013	PFB-04-1RD	.400/10.16	.150/3.81	.060/1.53	4.0/1.2
192700018	PFB-07-1BK	192700023	PFB-07-1RD	.750/19.05	.220/5.59	.095/2.41	
192700028	PFB-11-1BK	192700033	PFB-11-1RD	1.100/27.94	.375/9.53	.120/3.05	
192700038	PFB-15-1BK	192700043	PFB-15-1RD	1.500/38.10	.500/19.05	.140/3.56	
192700048	PFB-20-1BK	192700053	PFB-20-1RD	2.000/50.80	.750/19.05	.155/3.98	
192700058	PFB-30-1BK	192700063	PFB-30-1RD	3.540/89.92	1.18/29.97	.155/3.98	
192700068	PFB-40-1BK	192700073	PFB-40-1RD	4.72/119.89	1.57/39.88	.170/4.37	



SALES DRAWING

NOTES:

1. MATERIAL: POLYOLEFIN
2. OTHER CUT LENGTHS ARE AVAILABLE.
3. PARTS ARE ROHS COMPLIANT.

(A1)

CHANGED TITLE E.C. NO: IPG/2013-0982 DRAWING: JAS01 2013/01/10 CHKD: IMACNEIL 2013/01/10 APPR: IMACNEIL 2013/01/31 REV: A1	QUALITY SYMBOLS ▽=0 ▽=0	GENERAL TOLERANCES (UNLESS SPECIFIED) <table border="1"> <thead> <tr> <th></th> <th>mm</th> <th>INCH</th> </tr> </thead> <tbody> <tr> <td>4 PLACES</td> <td>± .---</td> <td>± .---</td> </tr> <tr> <td>3 PLACES</td> <td>± .---</td> <td>± .010</td> </tr> <tr> <td>2 PLACES</td> <td>± 0.25</td> <td>± .02</td> </tr> <tr> <td>1 PLACE</td> <td>± 0.51</td> <td>± .---</td> </tr> <tr> <td colspan="3">ANGULAR ± .---</td> </tr> </tbody> </table>		mm	INCH	4 PLACES	± .---	± .---	3 PLACES	± .---	± .010	2 PLACES	± 0.25	± .02	1 PLACE	± 0.51	± .---	ANGULAR ± .---			DIMENSION STYLE IN/MM	SCALE 1:1	DESIGN UNITS INCH	THIRD ANGLE PROJECTION
		mm	INCH																					
	4 PLACES	± .---	± .---																					
	3 PLACES	± .---	± .010																					
2 PLACES	± 0.25	± .02																						
1 PLACE	± 0.51	± .---																						
ANGULAR ± .---																								
		DRAWN BY: BENDERLE CHECKED BY: R. DEROSS APPROVED BY: R. DEROSS	DATE: 2004/09/23 DATE: 2004/09/23 DATE: 2004/09/23	TITLE: (A1) POLYOLEFIN HEAT SHRINK TUBING 19270 SERIES	MOLEX INCORPORATED																			
		DRAFT WHERE APPLICABLE MUST REMAIN WITHIN DIMENSIONS	MATERIAL NO. SEE CHART	DOCUMENT NO. SD-19270-001	SHEET NO. 1 OF 1																			
		THIS DRAWING CONTAINS INFORMATION THAT IS PROPRIETARY TO MOLEX INCORPORATED AND SHOULD NOT BE USED WITHOUT WRITTEN PERMISSION																						