

## Excellent Integrated System Limited

Stocking Distributor

Click to view price, real time Inventory, Delivery & Lifecycle Information:

[Molex Connector Corporation](#)  
[0192670367](#)

For any questions, you can email us directly:

[sales@integrated-circuit.com](mailto:sales@integrated-circuit.com)



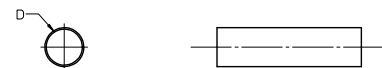
Distributor of Molex Connector Corporation: Excellent Integrated System Limited

Datasheet of 0192670367 - 2 INCH HST CLEAR LG 100' SPOOL

Contact us: sales@integrated-circuit.com Website: www.integrated-circuit.com

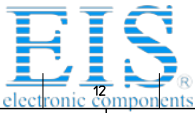
Table with columns for material number, engineering number, color (BLACK, WHITE, RED, BLUE, CLEAR, YELLOW, MIN, MAX, RECOVERED), and length. Rows are categorized by color and length (e.g., 4.0/1.2, 1000/304.8, 500/152.4).

SALES DRAWING



- NOTES:
1. MATERIAL: POLYOLEFIN
2. OTHER CUT LENGTHS ARE AVAILABLE.
3. PARTS ARE RoHS COMPLIANT.

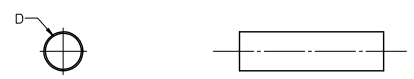
Technical drawing metadata including: CHANGED TITLE, EC NO., DRAWING JASO1, CHKD: JACQUEL, APPR: JACQUEL, QUALITY SYMBOLS, GENERAL TOLERANCES, DIMENSION STYLE, SCALE 1:1, DESIGN UNITS INCH, THIRD ANGLE PROJECTION, TITLE POLYOLEFIN HEAT SHRINK TUBING 19267 SERIES, MOLEX INCORPORATED, DOCUMENT NO. SD-19267-001, SHEET NO. 1 OF 1.



**Distributor of Molex Connector Corporation: Excellent Integrated System Limited**  
 Datasheet of 0192670367 - 2 INCH HST CLEAR LG 100' SPOOL

Contact us: sales@integrated-circuit.com Website: www.integrated-circuit.com

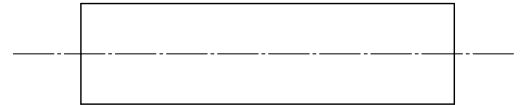
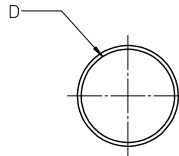
	BLACK		WHITE		RED		CLEAR		YELLOW		MIN	MAX	RECOVERED	LENGTH
	MATERIAL NUMBER	ENGINEERING NUMBER	MATERIAL NUMBER	ENGINEERING NUMBER	MATERIAL NUMBER	ENGINEERING NUMBER	MATERIAL NUMBER	ENGINEERING NUMBER	MATERIAL NUMBER	ENGINEERING NUMBER	EXPANDED ID 'D'	RECOVERED ID	WALL THK REF	FEET/METERS
J	192680018	PFV-3/64-1BK	192680019	PFV-3/64-1WT	192680020	PFV-3/64-1RD	192680021	PFV-3/64-1CL	192680022	PFV-3/64-1YL	.046/1.17	.023/0.58	.018/0.46	4.0/1.2
	192680043	PFV-1/16-1BK	192680044	PFV-1/16-1WT	192680045	PFV-1/16-1RD	192680046	PFV-1/16-1CL	192680047	PFV-3/32-1YL	.063/1.60	.032/0.81	.018/0.46	
	192680068	PFV-3/32-1BK	192680069	PFV-3/32-1WT	192680070	PFV-3/32-1RD	192680071	PFV-3/32-1CL	192680072	PFV-3/32-1YL	.093/2.36	.046/1.17	.020/0.51	
	192680093	PFV-1/8-1BK	192680094	PFV-1/8-1WT	192680095	PFV-1/8-1RD	192680096	PFV-1/8-1CL	192680097	PFV-1/8-1YL	.125/3.18	.063/1.60	.020/0.51	
	192680118	PFV-3/16-1BK	192680119	PFV-3/16-1WT	192680120	PFV-3/16-1RD	192680121	PFV-3/16-1CL	192680122	PFV-3/16-1YL	.187/4.75	.093/2.36	.020/0.51	
	192680143	PFV-1/4-1BK	192680144	PFV-1/4-1WT	192680145	PFV-1/4-1RD	192680146	PFV-1/4-1CL	192680147	PFV-1/4-1YL	.250/6.35	.125/3.18	.025/0.64	
I	192680193	PFV-3/8-1BK	192680194	PFV-3/8-1WT	192680195	PFV-3/8-1RD	192680196	PFV-3/8-1CL	192680197	PFV-3/8-1YL	.375/9.53	.187/4.75	.025/0.64	
	192680218	PFV-1/2-1BK	192680219	PFV-1/2-1WT	192680220	PFV-1/2-1RD	192680221	PFV-1/2-1CL	192680222	PFV-1/2-1YL	.500/12.70	.250/6.35	.025/0.64	
	192680243	PFV-5/8-1BK	192680244	PFV-5/8-1WT	192680245	PFV-5/8-1RD	192680246	PFV-5/8-1CL	192680247	PFV-5/8-1YL	.625/15.88	.313/7.95	.025/0.64	
	192680268	PFV-3/4-1BK	192680269	PFV-3/4-1WT	192680270	PFV-3/4-1RD	192680271	PFV-3/4-1CL	192680272	PFV-3/4-1YL	.750/19.05	.375/9.53	.035/0.89	
	192680293	PFV-1-1BK	192680294	PFV-1-1WT	192680295	PFV-1-1RD	192680296	PFV-1-1CL	192680297	PFV-1-1YL	1.000/25.40	.500/12.70	.035/0.89	
	192680318	PFV-1/14-1BK	192680319	PFV-1/14-1WT	192680320	PFV-1/14-1RD	192680321	PFV-1/14-1CL	192680322	PFV-1/14-1YL	1.250/31.75	.630/16.00	.035/0.89	
H	192680343	PFV-1/2-1BK	192680344	PFV-1/2-1WT	192680345	PFV-1/2-1RD	192680346	PFV-1/2-1CL	192680347	PFV-1/2-1YL	1.500/38.10	.750/19.05	.040/1.02	
	192680368	PFV-2-1BK	192680369	PFV-2-1WT	192680370	PFV-2-1RD	192680371	PFV-2-1CL	192680372	PFV-2-1YL	2.000/50.80	1.000/25.40	.045/1.14	
	192680393	PFV-3-1BK	092680394	PFV-3-1WT	192680395	PFV-3-1RD	192680396	PFV-3-1CL	192680397	PFV-3-1YL	3.000/76.20	1.500/38.10	.050/1.27	
	192680418	PFV-4-1BK	192680419	PFV-4-1WT	192680420	PFV-4-1RD	192680421	PFV-4-1CL	192680422	PFV-4-1YL	4.000/101.60	2.000/50.80	.055/1.40	
	192680033	PFV-3/64-4BK	192680034	PFV-3/64-4WT	192680035	PFV-3/64-4RD	192680036	PFV-3/64-4CL	192680037	PFV-3/64-4YL	.046/1.17	.023/0.58	.018/0.46	
	192680058	PFV-1/16-4BK	192680059	PFV-1/16-4WT	192680060	PFV-1/16-4RD	192680061	PFV-1/16-4CL	192680062	PFV-1/16-4YL	.063/1.60	.032/0.81	.018/0.46	
G	192680083	PFV-3/32-4BK	192680084	PFV-3/32-4WT	192680085	PFV-3/32-4RD	192680086	PFV-3/32-4CL	192680087	PFV-3/32-4YL	.093/2.36	.046/1.17	.020/0.51	
	192680108	PFV-1/8-4BK	192680109	PFV-1/8-4WT	192680110	PFV-1/8-4RD	192680111	PFV-1/8-4CL	192680112	PFV-1/8-4YL	.125/3.18	.063/1.60	.020/0.51	
	192680133	PFV-3/16-4BK	192680134	PFV-3/16-4WT	192680135	PFV-3/16-4RD	192680136	PFV-3/16-4CL	192680137	PFV-3/16-4YL	.187/4.75	.093/2.36	.020/0.51	
	192680158	PFV-1/4-4BK	192680159	PFV-1/4-4WT	192680160	PFV-1/4-4RD	192680161	PFV-1/4-4CL	192680162	PFV-1/4-4YL	.250/6.35	.125/3.18	.025/0.64	
	192680208	PFV-3/8-4BK	192680209	PFV-3/8-4WT	192680210	PFV-3/8-4RD	192680211	PFV-3/8-4CL	192680212	PFV-3/8-4YL	.375/9.53	.187/4.75	.025/0.64	
	192680233	PFV-1/2-4BK	192680234	PFV-1/2-4WT	192680235	PFV-1/2-4RD	192680236	PFV-1/2-4CL	192680237	PFV-1/2-4YL	.500/12.70	.250/6.35	.025/0.64	
	192680258	PFV-5/8-4BK	192680259	PFV-5/8-4WT	192680260	PFV-5/8-4RD	192680261	PFV-5/8-4CL	192680262	PFV-5/8-4YL	.625/15.88	.313/7.95	.025/0.64	
F	192680283	PFV-3/4-4BK	192680284	PFV-3/4-4WT	192680285	PFV-3/4-4RD	192680286	PFV-3/4-4CL	192680287	PFV-3/4-4YL	.750/19.05	.375/9.53	.035/0.89	
	192680308	PFV-1-4BK	192680309	PFV-1-4WT	192680310	PFV-1-4RD	192680311	PFV-1-4CL	192680312	PFV-1-4YL	1.000/25.40	.500/12.70	.035/0.89	
	192680333	PFV-1/14-4BK	192680334	PFV-1/14-4WT	192680335	PFV-1/14-4RD	192680336	PFV-1/14-4CL	192680337	PFV-1/14-4YL	1.250/31.75	.630/16.00	.035/0.89	
	192680038	PFV-3/64-5BK	192680039	PFV-3/64-5WT	192680040	PFV-3/64-5RD	192680041	PFV-3/64-5CL	192680042	PFV-3/64-5YL	.046/1.17	.023/0.58	.018/0.46	
	192680063	PFV-1/16-5BK	192680064	PFV-1/16-5WT	192680065	PFV-1/16-5RD	192680066	PFV-1/16-5CL	192680067	PFV-1/16-5YL	.063/1.60	.032/0.81	.018/0.46	
	192680088	PFV-3/32-5BK	192680089	PFV-3/32-5WT	192680090	PFV-3/32-5RD	192680091	PFV-3/32-5CL	192680092	PFV-3/32-5YL	.093/2.36	.046/1.17	.020/0.51	
E	192680113	PFV-1/8-5BK	192680114	PFV-1/8-5WT	192680115	PFV-1/8-5RD	192680116	PFV-1/8-5CL	192680117	PFV-1/8-5YL	.125/3.18	.063/1.60	.020/0.51	
	192680138	PFV-3/16-5BK	192680139	PFV-3/16-5WT	192680140	PFV-3/16-5RD	192680141	PFV-3/16-5CL	192680142	PFV-3/16-5YL	.187/4.75	.093/2.36	.020/0.51	
	192680163	PFV-1/4-5BK	192680164	PFV-1/4-5WT	192680165	PFV-1/4-5RD	192680166	PFV-1/4-5CL	192680167	PFV-1/4-5YL	.250/6.35	.125/3.18	.025/0.64	
	192680213	PFV-3/8-5BK	192680214	PFV-3/8-5WT	192680215	PFV-3/8-5RD	192680216	PFV-3/8-5CL	192680217	PFV-3/8-5YL	.375/9.53	.187/4.75	.025/0.64	
	192680238	PFV-1/2-5BK	192680239	PFV-1/2-5WT	192680240	PFV-1/2-5RD	192680241	PFV-1/2-5CL	192680242	PFV-1/2-5YL	.500/12.70	.250/6.35	.025/0.64	
	192680263	PFV-5/8-5BK	192680264	PFV-5/8-5WT	192680265	PFV-5/8-5RD	192680266	PFV-5/8-5CL	192680267	PFV-5/8-5YL	.625/15.88	.313/7.95	.025/0.64	
	192680358	PFV-1-1/2-4BK	192680359	PFV-1-1/2-4WT	192680360	PFV-1-1/2-4RD	192680361	PFV-1-1/2-4CL	192680362	PFV-1-1/2-4YL	1.500/38.10	.750/19.05	.040/1.02	
D	192680383	PFV-2-4BK	192680384	PFV-2-4WT	192680385	PFV-2-4RD	192680386	PFV-2-4CL	192680387	PFV-2-4YL	2.000/50.80	1.000/25.40	.045/1.14	
	192680408	PFV-3-4BK	192680409	PFV-3-4WT	192680410	PFV-3-4RD	192680411	PFV-3-4CL	192680412	PFV-3-4YL	3.000/76.20	1.500/38.10	.050/1.27	
	192680433	PFV-4-4BK	192680434	PFV-4-4WT	192680435	PFV-4-4RD	192680436	PFV-4-4CL	192680437	PFV-4-4YL	4.000/101.60	2.000/50.80	.055/1.40	



- NOTES:
- MATERIAL: PVC.
  - OTHER CUT LENGTHS ARE AVAILABLE.
  - PARTS ARE ROHS COMPLIANT.

<b>CHANGED TITLE</b> EC NO: IP6203-0962 DRAWN BY: JASOT 2010/1/10 CHKD: WJANEIL 2010/01/10 APPR: WJANEIL 2010/01/13	<b>QUALITY SYMBOLS</b> ▽=0 ▽=0	<b>GENERAL TOLERANCES (UNLESS SPECIFIED)</b> mm INCH 4 PLACES ± --- ± --- 3 PLACES ± --- ± .010 2 PLACES ± 0.25 ± .02 1 PLACE ± 0.5 ± --- ANGULAR ± ---°	<b>DIMENSION STYLE</b> IN/MM DRAWN BY: BENDERLE DATE: 2004/09/23 CHECKED BY: DATE: R DEROSS DATE: 2004/09/23 APPROVED BY: JFMURPHY DATE: 2010/04/07	SCALE: 1:1 DESIGN UNITS: INCH THIRD ANGLE PROJECTION	TITLE: PVC, HEAT SHRINK TUBING 19268 SERIES MOLEX MOLEX INCORPORATED MATERIAL NO. DOCUMENT NO. SD-19268-001 SHEET NO. 1 OF 1
		DRAFT WHERE APPLICABLE MUST REMAIN WITHIN DIMENSIONS		THIS DRAWING CONTAINS INFORMATION THAT IS PROPRIETARY TO MOLEX INCORPORATED AND SHOULD NOT BE USED WITHOUT WRITTEN PERMISSION	

10		9		8		7		6		5		4		3		2		19269				
BLACK		CLEAR		MIN		MAX		RECOVERED		LENGTH												
MATERIAL NUMBER	ENGINEERING NUMBER	MATERIAL NUMBER	ENGINEERING NUMBER	EXPANDED ID "D"	RECOVERED ID	WALL THK REF	FEET/METERS															
192690008	PF3-1/8-1BK			.125/3.018	.040/1.02	.038/0.97	4.0/1.2															
192690013	PF3-3/16-1BK			.187/4.75	.060/1.52	.045/1.14																
		192690043	PF3-3/16-1CL	.225/5.72	.050/1.27	.045/1.14																
192690018	PF3-1/4-1BK			.250/6.35	.080/2.03	.047/1.19																
		192690048	PF3-1/4-1CL	.293/7.44	.065/1.65	.047/1.19																
192690023	PF3-3/8-1BK			.375/9.53	.120/3.05	.050/1.27																
		192690053	PF3-3/8-1CL	.427/10.85	.095/2.43	.050/1.27																
192690028	PF3-1/2-1BK			.500/12.70	.157/3.99	.055/1.40																
		192690058	PF3-1/2-1CL	.700/17.78	.175/4.45	.055/1.40																
192690033	PF3-3/4-1BK			.750/19.05	.230/5.84	.065/1.65																
192690038	PF3-1-1BK			1.000/25.40	.320/8.13	.075/1.90																



SALES DRAWING

NOTES:

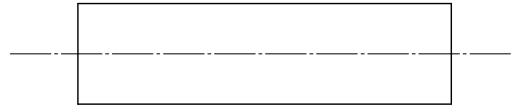
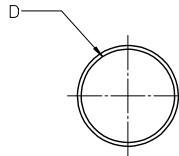
(A1)

- MATERIAL: POLYOLEFIN WITH ADHESIVE LINER.
- OTHER CUT LENGTHS ARE AVAILABLE.
- PARTS ARE RoHS COMPLIANT.

(A1)

CORRECT MAT'L E.C. NO: IPG/2013-0982 DRAWN BY: JASOT 2013/01/10 CHKD: JACNETL 2013/01/10 APPR: JACNETL 2013/01/31 REV: A1	QUALITY SYMBOLS	GENERAL TOLERANCES (UNLESS SPECIFIED)		DIMENSION STYLE IN/MM		SCALE 1:1	DESIGN UNITS INCH	THIRD ANGLE PROJECTION
	▽=0	4 PLACES ±---	±---	mm	INCH	DRAWN BY BENDERLE	DATE 2004/09/23	TITLE (A1) POLYOLEFIN W/ ADHESIVE LINER HEAT SHRINK TUBING 19269 SERIES
	▽=0	3 PLACES ±---	±.010			CHECKED BY R DEROSS	DATE 2004/09/23	MOLEX INCORPORATED
		2 PLACES ±0.25	±.02			APPROVED BY R DEROSS	DATE 2004/09/23	DOCUMENT NO. SD-19269-001
		1 PLACE ±0.51	±---	ANGULAR ±---		MATERIAL NO. SEE CHART		SHEET NO. 1 OF 1
DRAFT WHERE APPLICABLE MUST REMAIN WITHIN DIMENSIONS		THIS DRAWING CONTAINS INFORMATION THAT IS PROPRIETARY TO MOLEX INCORPORATED AND SHOULD NOT BE USED WITHOUT WRITTEN PERMISSION						

10		9		8		7		6		5		4		3		2		19270				
BLACK		RED		MIN		MAX		RECOVERED		LENGTH												
MATERIAL NUMBER	ENGINEERING NUMBER	MATERIAL NUMBER	ENGINEERING NUMBER	EXPANDED ID "D"	RECOVERED ID	WALL THK REF	FEET/METERS															
192700008	PFB-04-1BK	192700013	PFB-04-1RD	.400/10.16	.150/3.81	.060/1.53	4.0/1.2															
192700018	PFB-07-1BK	192700023	PFB-07-1RD	.750/19.05	.220/5.59	.095/2.41																
192700028	PFB-11-1BK	192700033	PFB-11-1RD	1.100/27.94	.375/9.53	.120/3.05																
192700038	PFB-15-1BK	192700043	PFB-15-1RD	1.500/38.10	.500/19.05	.140/3.56																
192700048	PFB-20-1BK	192700053	PFB-20-1RD	2.000/50.80	.750/19.05	.155/3.98																
192700058	PFB-30-1BK	192700063	PFB-30-1RD	3.540/89.92	1.18/29.97	.155/3.98																
192700068	PFB-40-1BK	192700073	PFB-40-1RD	4.72/119.89	1.57/39.88	.170/4.37																



SALES DRAWING

NOTES:

1. MATERIAL: POLYOLEFIN
2. OTHER CUT LENGTHS ARE AVAILABLE.
3. PARTS ARE ROHS COMPLIANT.

(A1)

<b>CHANGED TITLE</b> E.C. NO: IPG/2013-0982 DRAWING: JAS01 2013/01/10 CHKD: JACNEL 2013/01/10 APPR: JACNEL 2013/01/31	<b>QUALITY SYMBOLS</b> ▽=0 ▽=0	<b>GENERAL TOLERANCES (UNLESS SPECIFIED)</b>		<b>DIMENSION STYLE</b> IN/MM		<b>SCALE</b> 1:1	<b>DESIGN UNITS</b> INCH	THIRD ANGLE PROJECTION	
		4 PLACES ± --- ± ---	3 PLACES ± --- ± .010	DRAWN BY BENDERLE	DATE 2004/09/23	<b>TITLE</b> (A1) POLYOLEFIN HEAT SHRINK TUBING 19270 SERIES			
		2 PLACES ± 0.25 ± .02	1 PLACE ± 0.51 ± ---	CHECKED BY R DEROSS	DATE 2004/09/23	<b>MOLEX INCORPORATED</b>			
		ANGULAR ± ---°		APPROVED BY R DEROSS		DATE 2004/09/23	<b>SD-19270-001</b>		
DRAFT WHERE APPLICABLE MUST REMAIN WITHIN DIMENSIONS		MATERIAL NO. <b>SEE CHART</b>		DOCUMENT NO.		SHEET NO. 1 OF 1			