



Distributor of Molex Connector Corporation: Excellent Integrated System Limited

Datasheet of 0192690058 - 1/2 INCH DUAL HST CLR 25/4' PKG

Contact us: sales@integrated-circuit.com Website: www.integrated-circuit.com

Excellent Integrated System Limited

Stocking Distributor

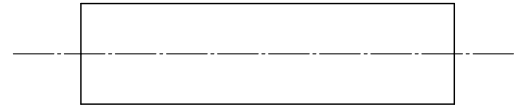
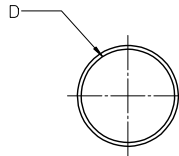
Click to view price, real time Inventory, Delivery & Lifecycle Information:

[Molex Connector Corporation](#)
[0192690058](#)

For any questions, you can email us directly:

sales@integrated-circuit.com

	10	9	8	7	6	5	4	3	2	19269
	BLACK		CLEAR		MIN	MAX	RECOVERED	LENGTH		
F	MATERIAL NUMBER	ENGINEERING NUMBER	MATERIAL NUMBER	ENGINEERING NUMBER	EXPANDED ID "D"	RECOVERED ID	WALL THK REF	FEET/METERS		
	192690008	PF3-1/8-1BK			.125/3.018	.040/1.02	.038/0.97	4.0/1.2		
	192690013	PF3-3/16-1BK			.187/4.75	.060/1.52	.045/1.14			
			192690043	PF3-3/16-1CL	.225/5.72	.050/1.27	.045/1.14			
	192690018	PF3-1/4-1BK			.250/6.35	.080/2.03	.047/1.19			
			192690048	PF3-1/4-1CL	.293/7.44	.065/1.65	.047/1.19			
	192690023	PF3-3/8-1BK			.375/9.53	.120/3.05	.050/1.27			
			192690053	PF3-3/8-1CL	.427/10.85	.095/2.43	.050/1.27			
E	192690028	PF3-1/2-1BK			.500/12.70	.157/3.99	.055/1.40			
			192690058	PF3-1/2-1CL	.700/17.78	.175/4.45	.055/1.40			
	192690033	PF3-3/4-1BK			.750/19.05	.230/5.84	.065/1.65			
	192690038	PF3-1-1BK			1.000/25.40	.320/8.13	.075/1.90			



SALES DRAWING

NOTES:

(A1)

- MATERIAL: POLYOLEFIN WITH ADHESIVE LINER.
- OTHER CUT LENGTHS ARE AVAILABLE.
- PARTS ARE RoHS COMPLIANT.

(A1)

CORRECT MAT'L E.C. NO: IPG/2013-0982 DRAWING: JAS01 2013/01/10 CHKD: JACNEL 2013/01/10 APPR: JACNEL 2013/01/31 REV: A1	QUALITY SYMBOLS	GENERAL TOLERANCES (UNLESS SPECIFIED)		DIMENSION STYLE IN/MM		SCALE 1:1	DESIGN UNITS INCH	THIRD ANGLE PROJECTION
	▽=0	4 PLACES	± ---	± ---	DRAWN BY BENDERLE	DATE 2004/09/23	TITLE (A1) POLYOLEFIN W/ ADHESIVE LINER HEAT SHRINK TUBING 19269 SERIES MOLEX INCORPORATED MATERIAL NO. SEE CHART DOCUMENT NO. SD-19269-001 SHEET NO. 1 OF 1	
	▽=0	3 PLACES	± ---	± .010	CHECKED BY R DEROSS	DATE 2004/09/23		
		2 PLACES	± 0.25	± .02	APPROVED BY R DEROSS	DATE 2004/09/23		
		1 PLACE	± 0.51	± ---	ANGULAR ± ---°			
		DRAFT WHERE APPLICABLE MUST REMAIN WITHIN DIMENSIONS		MATERIAL NO. SEE CHART				