

Excellent Integrated System Limited

Stocking Distributor

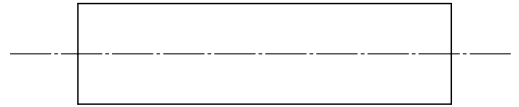
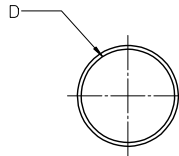
Click to view price, real time Inventory, Delivery & Lifecycle Information:

[Molex Connector Corporation](#)
[0192700023](#)

For any questions, you can email us directly:

sales@integrated-circuit.com

BLACK		RED		MIN	MAX	RECOVERED	LENGTH
MATERIAL NUMBER	ENGINEERING NUMBER	MATERIAL NUMBER	ENGINEERING NUMBER	EXPANDED ID "D"	RECOVERED ID	WALL THK REF	FEET/METERS
192700008	PFB-04-1BK	192700013	PFB-04-1RD	.400/10.16	.150/3.81	.060/1.53	4.0/1.2
192700018	PFB-07-1BK	192700023	PFB-07-1RD	.750/19.05	.220/5.59	.095/2.41	
192700028	PFB-11-1BK	192700033	PFB-11-1RD	1.100/27.94	.375/9.53	.120/3.05	
192700038	PFB-15-1BK	192700043	PFB-15-1RD	1.500/38.10	.500/19.05	.140/3.56	
192700048	PFB-20-1BK	192700053	PFB-20-1RD	2.000/50.80	.750/19.05	.155/3.98	
192700058	PFB-30-1BK	192700063	PFB-30-1RD	3.540/89.92	1.18/29.97	.155/3.98	
192700068	PFB-40-1BK	192700073	PFB-40-1RD	4.72/119.89	1.57/39.88	.170/4.37	



SALES DRAWING

NOTES:

1. MATERIAL: POLYOLEFIN
2. OTHER CUT LENGTHS ARE AVAILABLE.
3. PARTS ARE ROHS COMPLIANT.

(A1)

CHANGED TITLE E.C. NO: IPG/2013-0982 DRAWING: JAS01 2013/01/10 CHKD: JACNEL 2013/01/10 APPR: JACNEL 2013/01/31 REV: A1	QUALITY SYMBOLS ▽=0 ▽=0	GENERAL TOLERANCES (UNLESS SPECIFIED) <table border="1"> <thead> <tr> <th></th> <th>mm</th> <th>INCH</th> </tr> </thead> <tbody> <tr> <td>4 PLACES</td> <td>± .---</td> <td>± .---</td> </tr> <tr> <td>3 PLACES</td> <td>± .---</td> <td>± .010</td> </tr> <tr> <td>2 PLACES</td> <td>± 0.25</td> <td>± .02</td> </tr> <tr> <td>1 PLACE</td> <td>± 0.51</td> <td>± .---</td> </tr> <tr> <td colspan="3">ANGULAR ± .---</td> </tr> </tbody> </table>		mm	INCH	4 PLACES	± .---	± .---	3 PLACES	± .---	± .010	2 PLACES	± 0.25	± .02	1 PLACE	± 0.51	± .---	ANGULAR ± .---			DIMENSION STYLE IN/MM	SCALE 1:1	DESIGN UNITS INCH	THIRD ANGLE PROJECTION
		mm	INCH																					
	4 PLACES	± .---	± .---																					
	3 PLACES	± .---	± .010																					
2 PLACES	± 0.25	± .02																						
1 PLACE	± 0.51	± .---																						
ANGULAR ± .---																								
DRAWN BY BENDERLE DATE 2004/09/23 CHECKED BY R. DEROSS DATE 2004/09/23 APPROVED BY R. DEROSS DATE 2004/09/23		TITLE (A1) POLYOLEFIN HEAT SHRINK TUBING 19270 SERIES		MATERIAL NO. SEE CHART DOCUMENT NO. SD-19270-001		SHEET NO. 1 OF 1																		
DRAFT WHERE APPLICABLE MUST REMAIN WITHIN DIMENSIONS																								
THIS DRAWING CONTAINS INFORMATION THAT IS PROPRIETARY TO MOLEX INCORPORATED AND SHOULD NOT BE USED WITHOUT WRITTEN PERMISSION																								