

## Excellent Integrated System Limited

Stocking Distributor

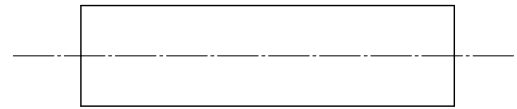
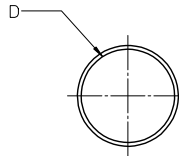
Click to view price, real time Inventory, Delivery & Lifecycle Information:

[Molex Connector Corporation](#)  
[0192700038](#)

For any questions, you can email us directly:

[sales@integrated-circuit.com](mailto:sales@integrated-circuit.com)

10		9		8		7		6		5		4		3		2		19270				
BLACK		RED		MIN		MAX		RECOVERED		LENGTH												
MATERIAL NUMBER	ENGINEERING NUMBER	MATERIAL NUMBER	ENGINEERING NUMBER	EXPANDED ID "D"	RECOVERED ID	WALL THK REF	FEET/METERS															
192700008	PFB-04-1BK	192700013	PFB-04-1RD	.400/10.16	.150/3.81	.060/1.53	4.0/1.2															
192700018	PFB-07-1BK	192700023	PFB-07-1RD	.750/19.05	.220/5.59	.095/2.41																
192700028	PFB-11-1BK	192700033	PFB-11-1RD	1.100/27.94	.375/9.53	.120/3.05																
192700038	PFB-15-1BK	192700043	PFB-15-1RD	1.500/38.10	.500/19.05	.140/3.56																
192700048	PFB-20-1BK	192700053	PFB-20-1RD	2.000/50.80	.750/19.05	.155/3.98																
192700058	PFB-30-1BK	192700063	PFB-30-1RD	3.540/89.92	1.18/29.97	.155/3.98																
192700068	PFB-40-1BK	192700073	PFB-40-1RD	4.72/119.89	1.57/39.88	.170/4.37																



SALES DRAWING

NOTES:

1. MATERIAL: POLYOLEFIN
2. OTHER CUT LENGTHS ARE AVAILABLE.
3. PARTS ARE ROHS COMPLIANT.

(A1)

<b>CHANGED TITLE</b> E.C. NO: IPG/2013-0982 DRAWING: JAS01 2013/01/10 CHKD: IMACNEIL 2013/01/10 APPR: IMACNEIL 2013/01/31 REV: A1	<b>QUALITY SYMBOLS</b> ▽=0 ▽=0	<b>GENERAL TOLERANCES (UNLESS SPECIFIED)</b>		<b>DIMENSION STYLE</b> IN/MM		<b>SCALE</b> 1:1	<b>DESIGN UNITS</b> INCH	THIRD ANGLE PROJECTION
		4 PLACES ± --- ± ---	mm INCH	DRAWN BY BENDERLE	DATE 2004/09/23	<b>TITLE</b> (A1) POLYOLEFIN HEAT SHRINK TUBING 19270 SERIES		
		3 PLACES ± --- ± .010	mm INCH	CHECKED BY R DEROSS	DATE 2004/09/23	<b>MATERIAL NO.</b> SEE CHART		
		2 PLACES ± 0.25 ± .02	mm INCH	APPROVED BY R DEROSS	DATE 2004/09/23	<b>DOCUMENT NO.</b> SD-19270-001	<b>SHEET NO.</b> 1 OF 1	