



Distributor of Molex Connector Corporation: Excellent Integrated System Limited
Datasheet of 0192760006 - Connector Quick Connect Receptacle 14-16 AWG 0.250"
(6.35mm) Crimp

Contact us: sales@integrated-circuit.com Website: www.integrated-circuit.com

Excellent Integrated System Limited

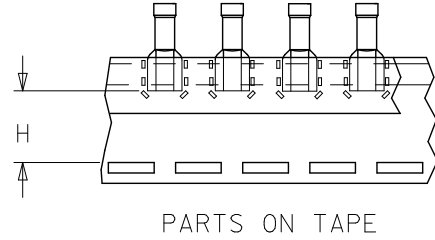
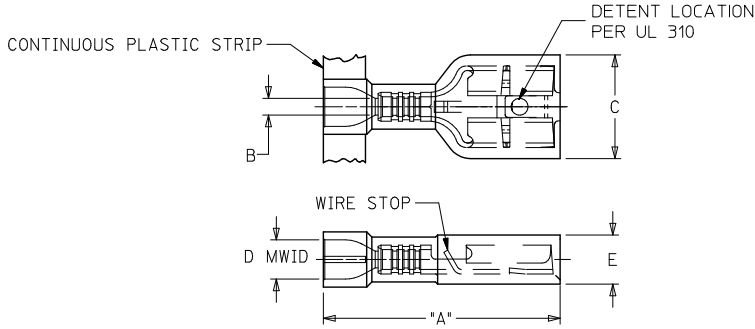
Stocking Distributor

Click to view price, real time Inventory, Delivery & Lifecycle Information:

[Molex Connector Corporation](#)
[0192760006](#)

For any questions, you can email us directly:
sales@integrated-circuit.com

10	9	8	7	6	5	4	3	2	19276						
LOOSE PIECE MATERIAL NUMBER	LOOSE PIECE ENGRNG NUMBER	CONTINUOUS STRIP MATERIAL NUMBER	CONTINUOUS STRIP ENGRNG NUMBER	MYLAR TAPE MATERIAL NUMBER	MYLAR TAPE ENGRNG NUMBER	WIRE RANGE AWG	FITS MALE TAB SIZE	HOUSING COLOR	STOCK THICK.	"A" MAX.	"B" MIN.	"C" MAX.	"D" MWID	"E" MAX.	"H" NOMINAL
192760002	AA-2201-LIF	192760001	AA-2201C-LIF	192760003	AA-2201T-LIF	22-18	.250x.032 (6.35x0.81)	RED	.016/0.41	.86/21.8	.058/1.47	.38/9.7	.135/3.43	.18/4.6	.56/14.2
192760005	BB-2206-LIF	192760004	BB-2206C-LIF	192760006	BB-2206T-LIF	16-14	.250x.032 (6.35x0.81)	BLUE	.016/0.41	.86/21.8	.083/2.10	.38/9.7	.160/4.06	.18/4.6	.56/14.2
192760008	C-2293-LIF	192760007	C-2293C-LIF	192760009	C-2293T-LIF	12-10	.250x.032 (6.35x0.81)	YELLOW	.018/0.46	1.03/26.1	.117/2.97	.38/9.7	.235/5.97	.22/5.6	.51/12.9



NOTES:

- MATERIALS:
 TERMINAL: MATTE-TIN PLATED BRASS
 INSULATION: NYLON 6/6 94V-2,
 SEE CHART FOR COLORS
- PRODUCT SPECIFICATION: PS-19902-012
- MWID = MAXIMUM WIRE INSULATION DIAMETER
- PARTS ARE ROHS COMPLIANT

SALES DRAWING

RELEASE EC NO: WNA2009-0761 DRAWN BY: ETHRODAHL 2010/03/18 CHKD: JMACNEIL 2010/03/18 APPR: JMACNEIL 2011/01/06 REV A	QUALITY SYMBOLS ▽=0 ▽=0	GENERAL TOLERANCES (UNLESS SPECIFIED)		DIMENSION STYLE IN/MM		SCALE 1:1	DESIGN UNITS INCH	THIRD ANGLE PROJECTION	
		4 PLACES ±.005 ±.005	3 PLACES ±.013 ±.010	2 PLACES ±.025 ±.020	1 PLACE ±.025 ±.020	ANGULAR ±1/2°	DRAWN BY: ETHRODAHL 2010/03/18	CHECKED BY: JMACNEIL 2010/03/18	TITLE: QUIXON LOW INSERT FORCE FULLY INSUL QUICK DISCNT INSULKRIMP 22-10 AWG
		DRAFT WHERE APPLICABLE MUST REMAIN WITHIN DIMENSIONS		SEE CHART		APPROVED BY: JMACNEIL 2011/01/06		MATERIAL NO. SD-19276-001	
		THIS DRAWING CONTAINS INFORMATION THAT IS PROPRIETARY TO MOLEX INCORPORATED AND SHOULD NOT BE USED WITHOUT WRITTEN PERMISSION		MATERIAL NO. SD-19276-001		DOCUMENT NO. SD-19276-001		SHEET NO. 1 OF 1	