



**Distributor of Molex Connector Corporation: Excellent Integrated System Limited**  
Datasheet of 0192760007 - Connector Quick Connect Receptacle 10-12 AWG 0.250"  
(6.35mm) Crimp

Contact us: [sales@integrated-circuit.com](mailto:sales@integrated-circuit.com) Website: [www.integrated-circuit.com](http://www.integrated-circuit.com)

---

## **Excellent Integrated System Limited**

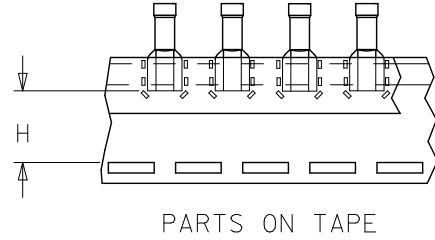
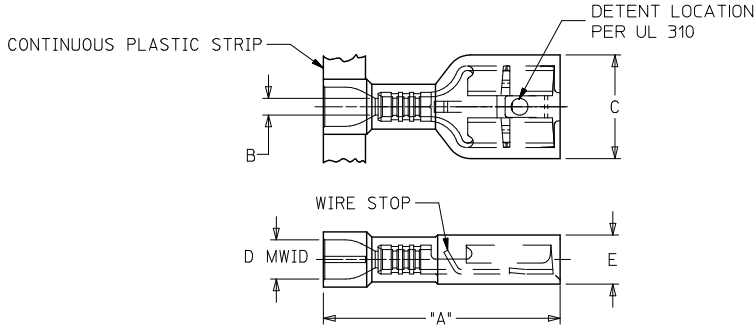
Stocking Distributor

Click to view price, real time Inventory, Delivery & Lifecycle Information:

[Molex Connector Corporation](#)  
[0192760007](#)

For any questions, you can email us directly:  
[sales@integrated-circuit.com](mailto:sales@integrated-circuit.com)

10	9	8	7	6	5	4	3	2	19276						
LOOSE PIECE MATERIAL NUMBER	LOOSE PIECE ENGRNG NUMBER	CONTINUOUS STRIP MATERIAL NUMBER	CONTINUOUS STRIP ENGRNG NUMBER	MYLAR TAPE MATERIAL NUMBER	MYLAR TAPE ENGRNG NUMBER	WIRE RANGE AWG	FITS MALE TAB SIZE	HOUSING COLOR	STOCK THICK.	"A" MAX.	"B" MIN.	"C" MAX.	"D" MWID	"E" MAX.	"H" NOMINAL
192760002	AA-2201-LIF	192760001	AA-2201C-LIF	192760003	AA-2201T-LIF	22-18	.250x.032 (6.35x0.81)	RED	.016/0.41	.86/21.8	.058/1.47	.38/9.7	.135/3.43	.18/4.6	.56/14.2
192760005	BB-2206-LIF	192760004	BB-2206C-LIF	192760006	BB-2206T-LIF	16-14	.250x.032 (6.35x0.81)	BLUE	.016/0.41	.86/21.8	.083/2.10	.38/9.7	.160/4.06	.18/4.6	.56/14.2
192760008	C-2293-LIF	192760007	C-2293C-LIF	192760009	C-2293T-LIF	12-10	.250x.032 (6.35x0.81)	YELLOW	.018/0.46	1.03/26.1	.117/2.97	.38/9.7	.235/5.97	.22/5.6	.51/12.9



NOTES:

- MATERIALS:  
 TERMINAL: MATTE-TIN PLATED BRASS  
 INSULATION: NYLON 6/6 94V-2,  
 SEE CHART FOR COLORS
- PRODUCT SPECIFICATION: PS-19902-012
- MWID = MAXIMUM WIRE INSULATION DIAMETER
- PARTS ARE ROHS COMPLIANT

SALES DRAWING

RELEASE EC NO: WNA2009-0761 DRAWN BY: ETHRODAHL 2010/03/18 CHKD: JMACNEIL 2010/03/18 APPR: JMACNEIL 2011/01/06 REV: A	QUALITY SYMBOLS ▽=0 ▽=0	GENERAL TOLERANCES (UNLESS SPECIFIED)		DIMENSION STYLE		SCALE	DESIGN UNITS	THIRD ANGLE PROJECTION	
				IN/MM		1:1	INCH		
		4 PLACES	± .005	± .005	DRAWN BY	DATE	TITLE		
		3 PLACES	± .010	± .010	ETHRODAHL	2010/03/18	QUIXON LOW INSERT FORCE FULLY INSUL QUICK DISCNT INSULKRIMP 22-10 AWG		
		2 PLACES	± .013	± .010	JMACNEIL	2010/03/18	Molex MOLEX INCORPORATED		
		1 PLACE	± .025	± .020	JMACNEIL	2011/01/06	SD-19276-001		
		ANGULAR ±1/2°		APPROVED BY		DATE	SHEET NO.		
		DRAFT WHERE APPLICABLE MUST REMAIN WITHIN DIMENSIONS		JMACNEIL		2011/01/06	1 OF 1		
				MATERIAL NO.		DOCUMENT NO.			
				SEE CHART					
				THIS DRAWING CONTAINS INFORMATION THAT IS PROPRIETARY TO MOLEX INCORPORATED AND SHOULD NOT BE USED WITHOUT WRITTEN PERMISSION					