

## Excellent Integrated System Limited

Stocking Distributor

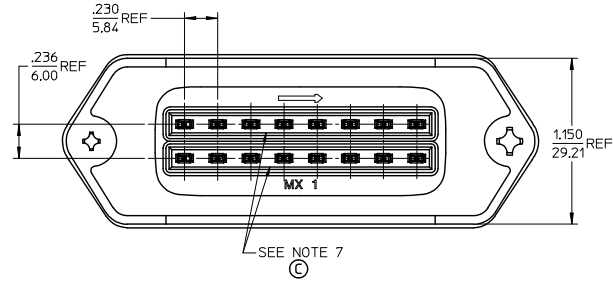
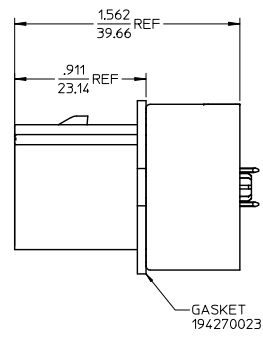
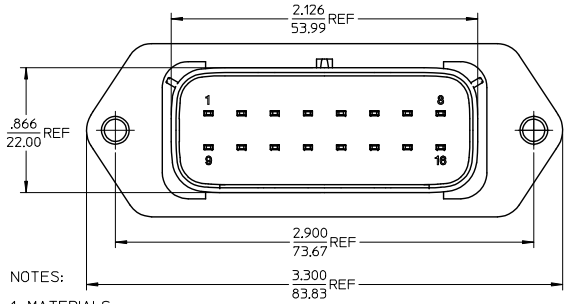
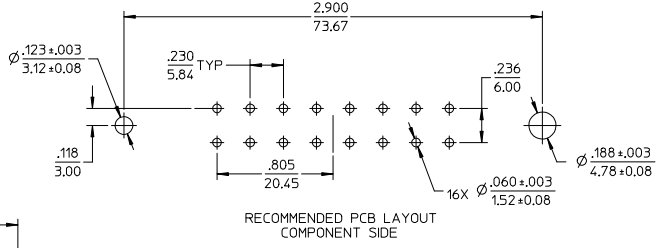
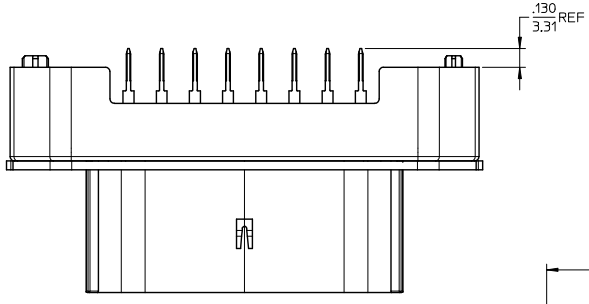
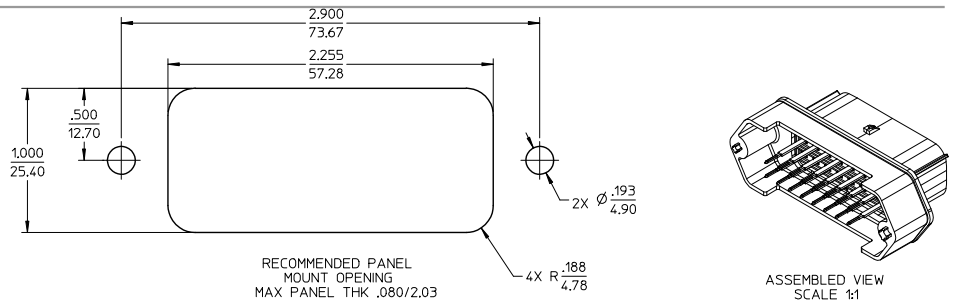
Click to view price, real time Inventory, Delivery & Lifecycle Information:

[Molex Connector Corporation](#)  
[0194280002](#)

For any questions, you can email us directly:

[sales@integrated-circuit.com](mailto:sales@integrated-circuit.com)

MATERIAL NUMBER	TERMINAL FINISH	TERMINAL PIN POTTING
19428-0002	TIN	NO
19428-0024	TIN/GOLD	
19428-0040	TIN	YES
19428-0041	TIN/GOLD	



- NOTES:
- MATERIALS:  
HOUSING: POLYESTER (PBT), GLASS FILLED, UL94 V-0.  
COLOR: BLACK  
TERMINALS: COPPER ALLOY  
TERMINAL POTTING AS APPLICABLE: ELASTOMERIC SILICONE.
  - FINISHES: 1. TIN ONLY: 100µN TIN OVER 50µN NICKEL  
2. TIN/GOLD: 30µN SELECT GOLD (CONTACT MATING AREA), 100µN SELECT TIN (PCB TAIL AREA) OVER 50µN NICKEL OVERALL.
  - PRODUCT SPECIFICATION: PS-19428-001.
  - PACKAGING SPECIFICATION: PK-19428-001.
  - MATES WITH: 19418 SERIES RECEPTACLE ASSEMBLIES.
  - RECOMMENDED MOUNTING HARDWARE: (2) #10 X .62/18.9 LONG PLASTIC THREAD CUTTING SCREWS. RECOMMENDED TORQUE 15-17 IN-LBS.  
SUGGESTED SOURCE: ITW SHAKEPROOF INDUSTRIAL BOSSCREW OR EQUIVALENT.
  - ELASTOMERIC SILICONE APPLIED IN TERMINAL WELLS. SEE CHART.
  - ASSEMBLY IS ROHS COMPLIANT.

ADDED MAT. NOS.	QUALITY SYMBOLS	GENERAL TOLERANCES (UNLESS SPECIFIED)		DIMENSION STYLE		SCALE	DESIGN UNITS	THIRD ANGLE PROJECTION	
		mm	INCH	IN/MM	DATE	INCH	INCH	INCH	
REC NO: E1C22007-0236	▽=0	4 PLACES	±---	±---	DYRICK	2:1	INCH	THIRD ANGLE PROJECTION	
DRW: JPAWL CK 2006/12/11	▽=0	3 PLACES	±---	±.015	CHECKED BY	DATE			
CHKD: JPAWL CK 2006/12/11		2 PLACES	±0.38	±---	JPAWL CK I	04/07/07			
APPR: JPAWL CK 2006/12/12		1 PLACE	±---	±---	APPROVED BY	DATE			
		ANGULAR ± 1°			RDEROSS	04/07/07			
		DRAFT WHERE APPLICABLE MUST REMAIN WITHIN DIMENSIONS		SEE CHART		MOLEX INCORPORATED		SHEET NO. 1 OF 1	
				MATERIAL NO. SD-19428-016		DOCUMENT NO. SD-19428-016			
		THIS DRAWING CONTAINS INFORMATION THAT IS PROPRIETARY TO MOLEX INCORPORATED AND SHOULD NOT BE USED WITHOUT WRITTEN PERMISSION							