

## Excellent Integrated System Limited

Stocking Distributor

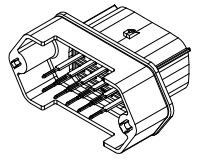
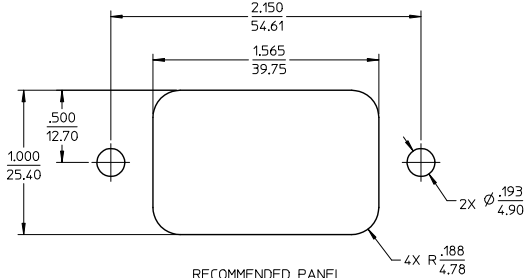
Click to view price, real time Inventory, Delivery & Lifecycle Information:

[Molex Connector Corporation](#)  
[0194280005](#)

For any questions, you can email us directly:

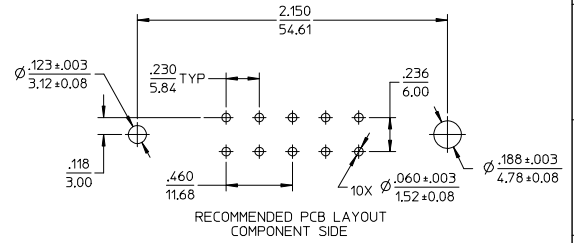
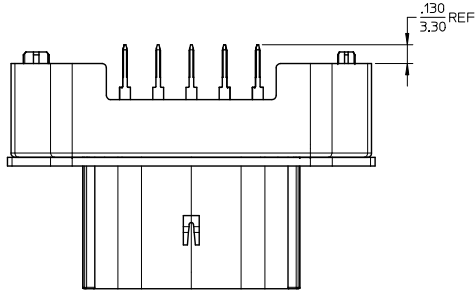
[sales@integrated-circuit.com](mailto:sales@integrated-circuit.com)

ASSEMBLY MATERIAL NUMBER	TERMINAL PLATING
194280005	TIN
194280022	TIN/GOLD

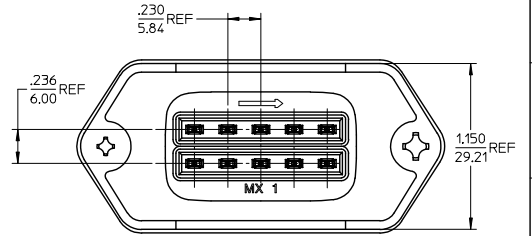
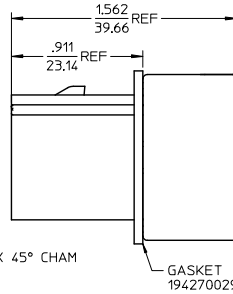
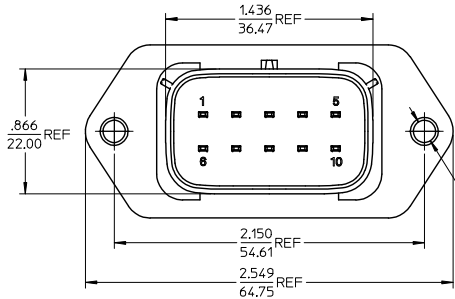


ASSEMBLED VIEW  
SCALE 1:1

RECOMMENDED PANEL  
MOUNT OPENING  
MAX PANEL THK .080/2.03



RECOMMENDED PCB LAYOUT  
COMPONENT SIDE



NOTES:

- MATERIALS:  
HOUSING: POLYESTER (PBT), GLASS FILLED, UL94 V-0,  
COLOR: BLACK  
TERMINALS: COPPER ALLOY
- FINISHES: 1. TIN ONLY: 100µN TIN OVER 50µN NICKEL  
2. TIN/GOLD: 30µN SELECT GOLD (CONTACT MATING AREA),  
100µN SELECT TIN (PCB TAIL AREA) OVER 50µN NICKEL OVERALL.
- PRODUCT SPECIFICATION: PS-19428-001.
- PACKAGING SPECIFICATION: PK-19428-001.
- MATES WITH: 19418 SERIES RECEPTACLE ASSEMBLIES.
- RECOMMENDED MOUNTING HARDWARE: (2) #10 X .62/18.9 LONG PLASTIC  
THREAD CUTTING SCREWS. RECOMMENDED TORQUE 15-17 IN-LBS.  
SUGGESTED SOURCE: ITW SHAKEPROOF INDUSTRIAL BOSSCREW OR EQUIVALENT.

REVISED EC NO: ETC2006-0028 DRAWN: JPWL I CK 2005/10/11 CHKD: JPWL I CK 2005/10/11 APPROVED: RDEROSS 2005/10/11	QUALITY SYMBOLS ▽=0 ▽=0	GENERAL TOLERANCES (UNLESS SPECIFIED)		DIMENSION STYLE IN/MM		SCALE 2:1	DESIGN UNITS INCH	THIRD ANGLE PROJECTION	
		mm	INCH	DRAWN BY DMYRICK	DATE 04/07/06	TITLE 10-WAY STRAIGHT HEADER ASSEMBLY, LONG VERSION			
B	REV	4 PLACES ± .005	± .005	CHECKED BY JPWL I CK	DATE 04/07/06	MATERIAL NO. SD-19428-014 DOCUMENT NO. SD-19428-014 SHEET NO. 1 OF 1			
		3 PLACES ± .015	± .015	APPROVED BY RDEROSS	DATE 04/07/06				
		2 PLACES ± 0.38	± .38	DRAFT WHERE APPLICABLE MUST REMAIN WITHIN DIMENSIONS		MATERIAL NO. SD-19428-014 DOCUMENT NO. SD-19428-014 SHEET NO. 1 OF 1			
		1 PLACE ± .005	± .005	SIZE C		THIS DRAWING CONTAINS INFORMATION THAT IS PROPRIETARY TO MOLEX INCORPORATED AND SHOULD NOT BE USED WITHOUT WRITTEN PERMISSION			