

Excellent Integrated System Limited

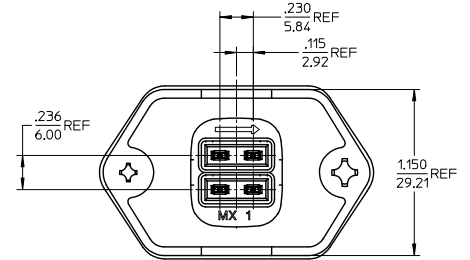
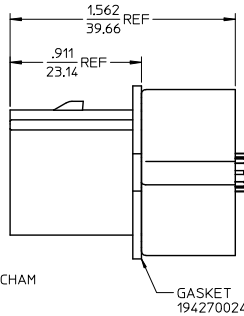
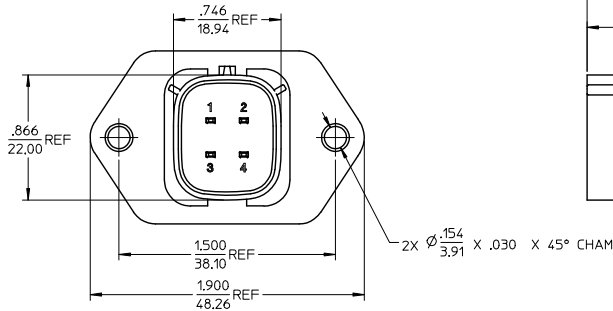
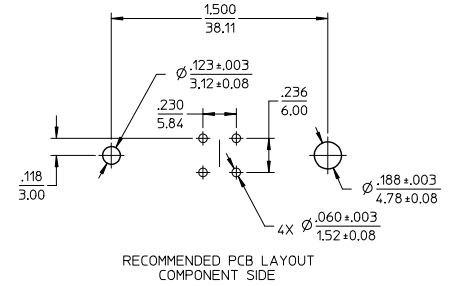
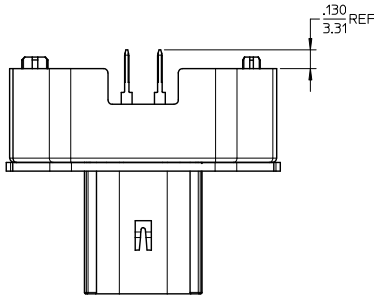
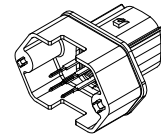
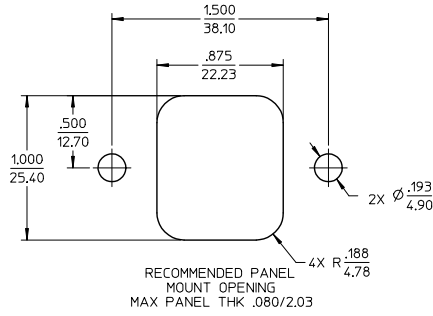
Stocking Distributor

Click to view price, real time Inventory, Delivery & Lifecycle Information:

[Molex Connector Corporation](#)
[0194280006](#)

For any questions, you can email us directly:
sales@integrated-circuit.com

| | |
|--------------------------|------------------|
| ASSEMBLY MATERIAL NUMBER | TERMINAL PLATING |
| 194280006 | TIN |
| 194280019 | TIN/GOLD |



NOTES:

- MATERIALS:
HOUSING: POLYESTER (PBT), GLASS FILLED, UL94 V-0,
COLOR: BLACK
TERMINALS: COPPER ALLOY
- FINISHES: 1. TIN ONLY: 100µN TIN OVER 50µN NICKEL
2. TIN/GOLD: 30µN SELECT GOLD (CONTACT MATING AREA),
100µN SELECT TIN (PCB TAIL AREA) OVER 50µN NICKEL OVERALL.
- PRODUCT SPECIFICATION: PS-19428-001.
- PACKAGING SPECIFICATION: PK-19428-001.
- MATES WITH: 19418 SERIES RECEPTACLE ASSEMBLIES.
- RECOMMENDED MOUNTING HARDWARE: (2)#10 X .62/18.9 LONG PLASTIC
THREAD CUTTING SCREWS. RECOMMENDED TORQUE 15-17 IN-LBS.
SUGGESTED SOURCE: ITW SHAKEPROOF INDUSTRIAL BOSSCREW OR EQUIVALENT.

| | | | | | | | |
|---|-------------------------------|--|---|------|--------------------|--------------|------------------------|
| REVISED EC NO: ETC2006-0028 DRAWN: JPAWLICK 2005/07/01 CHKD: JPAWLICK 2005/07/11 APPR: RDEROSS 2005/07/11 | QUALITY SYMBOLS ▽=0 ▽=0 | GENERAL TOLERANCES (UNLESS SPECIFIED) | DIMENSION STYLE | | SCALE | DESIGN UNITS | THIRD ANGLE PROJECTION |
| | | | mm | INCH | 2:1 | INCH | |
| DESCRIPTION | REVISION | 4 PLACES ± --- ± --- | DRAWN BY DATE | | TITLE | | |
| | | 3 PLACES ± --- ± .015 | DMYRICK 04/07/01 | | | | |
| REV | DESCRIPTION | 2 PLACES ± 0.38 ± --- | CHECKED BY DATE | | MOLEX INCORPORATED | | |
| | | 1 PLACE ± --- ± --- | JPAWLICK 04/07/01 | | | | |
| | | ANGULAR ± 1° | APPROVED BY DATE | | SD-19428-011 | | |
| | | | RDEROSS 04/07/01 | | | | |
| | | DRAFT WHERE APPLICABLE MUST REMAIN WITHIN DIMENSIONS | MATERIAL NO. | | DOCUMENT NO. | | |
| | | | SEE CHART | | SHEET NO. 1 OF 1 | | |
| | | | THIS DRAWING CONTAINS INFORMATION THAT IS PROPRIETARY TO MOLEX INCORPORATED AND SHOULD NOT BE USED WITHOUT WRITTEN PERMISSION | | | | |