

Excellent Integrated System Limited

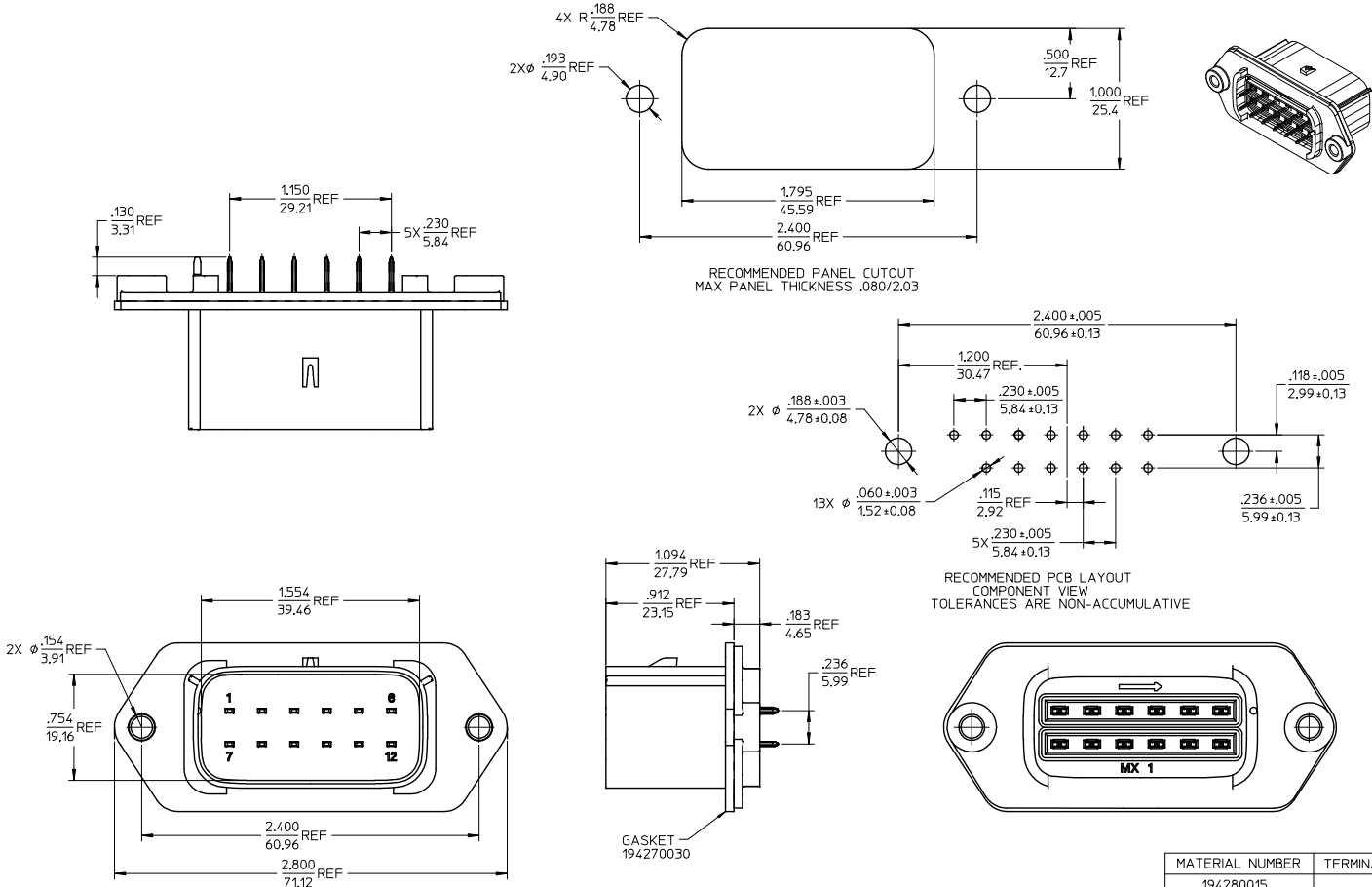
Stocking Distributor

Click to view price, real time Inventory, Delivery & Lifecycle Information:

[Molex Connector Corporation](#)
[0194280031](#)

For any questions, you can email us directly:

sales@integrated-circuit.com



- NOTES:
1. MATERIALS:
HOUSING: POLYESTER (PBT), GLASS FILLED, UL94 V-0,
COLOR: BLACK
TERMINALS: COPPER ALLOY
 2. FINISHES: 1. TIN ONLY: 100µN TIN OVER 50µN NICKEL
2. TIN/GOLD: 30µN SELECT GOLD (CONTACT MATING AREA),
100µN SELECT TIN (PCB TAIL AREA) OVER 50µN NICKEL OVERALL.
 3. PRODUCT SPECIFICATION: PS-19428-001.
 4. PACKAGING SPECIFICATION: PK-19428-002.
 5. MATES WITH: 19418 SERIES RECEPTACLE ASSEMBLIES.

PRODUCTION RELEASE EC NO: E1C2005-0213 DRAWN: JPWL1CK 2005/06/10 CHECKED: JPWL1CK 2005/06/14 APPROVED: RDEROSS 2005/06/14	QUALITY SYMBOLS ▽=0 ∇=0	GENERAL TOLERANCES (UNLESS SPECIFIED) <table border="1"> <tr> <th></th> <th>mm</th> <th>INCH</th> </tr> <tr> <td>4 PLACES</td> <td>± .015</td> <td>± .0005</td> </tr> <tr> <td>3 PLACES</td> <td>± .015</td> <td>± .0005</td> </tr> <tr> <td>2 PLACES</td> <td>± 0.38</td> <td>± .015</td> </tr> <tr> <td>1 PLACE</td> <td>± .015</td> <td>± .0005</td> </tr> </table>		mm	INCH	4 PLACES	± .015	± .0005	3 PLACES	± .015	± .0005	2 PLACES	± 0.38	± .015	1 PLACE	± .015	± .0005	DIMENSION STYLE IN/MM DRAWN BY: BRUPERT DATE: 04/06/16 CHECKED BY: JPWL1CK DATE: 04/06/16 APPROVED BY: RDEROSS DATE: 04/06/16	SCALE 2:1 DESIGN UNITS INCH THIRD ANGLE PROJECTION	MATERIAL NUMBER 194280015	TERMINAL PLATING TIN
				mm	INCH																
			4 PLACES	± .015	± .0005																
3 PLACES	± .015	± .0005																			
2 PLACES	± 0.38	± .015																			
1 PLACE	± .015	± .0005																			
MATERIAL NUMBER 194280031	SELECT GOLD/TIN SELECT GOLD/TIN																				
TITLE 12-WAY STRAIGHT HEADER ASSEMBLY, SHORT VERSION																					
MATERIAL NO. SEE CHART		DOCUMENT NO. SD-19428-007		MOLEX INCORPORATED																	
DRAFT WHERE APPLICABLE MUST REMAIN WITHIN DIMENSIONS		SIZE C		SHEET NO. 1 OF 1																	