

Excellent Integrated System Limited

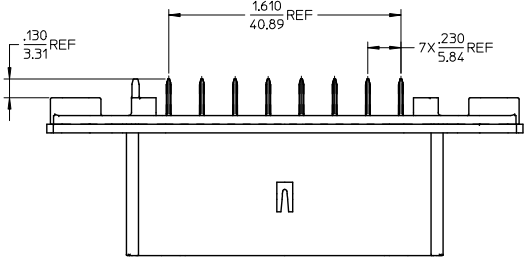
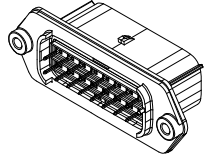
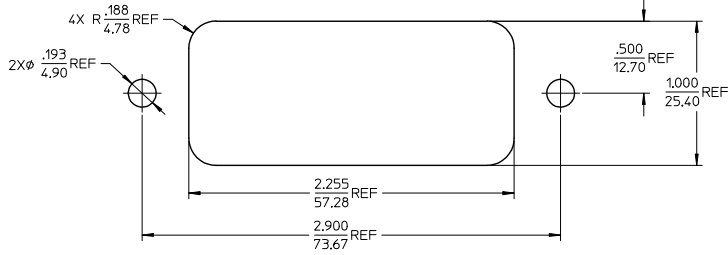
Stocking Distributor

Click to view price, real time Inventory, Delivery & Lifecycle Information:

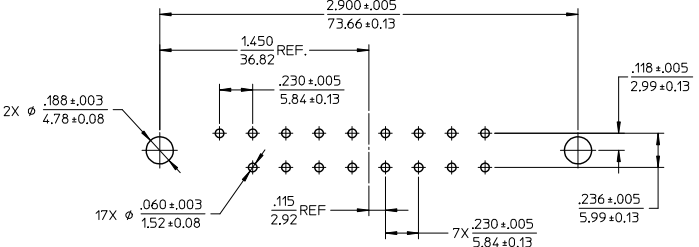
[Molex Connector Corporation](#)
[0194280032](#)

For any questions, you can email us directly:
sales@integrated-circuit.com

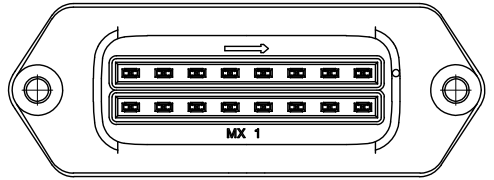
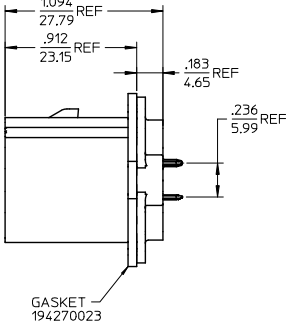
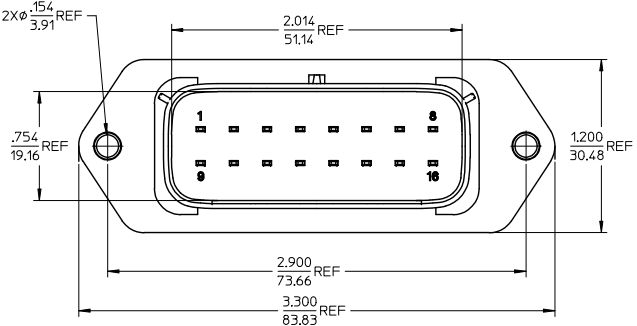
13 12 11 10 9 8 7 6 5 4 3 2 1



RECOMMENDED PANEL CUTOUT
MAX PANEL THICKNESS .080/2.03



RECOMMENDED PCB LAYOUT
COMPONENT VIEW
TOLERANCES ARE NON-ACCUMULATIVE



- NOTES:
- MATERIALS:
HOUSING: POLYESTER (PBT), GLASS FILLED, UL94 V-0,
COLOR: BLACK
TERMINALS: COPPER ALLOY
 - FINISHES: 1. TIN ONLY: 100µN TIN OVER 50µN NICKEL
2. TIN/GOLD: 30µN SELECT GOLD (CONTACT MATING AREA),
100µN SELECT TIN (PCB TAIL AREA) OVER 50µN NICKEL OVERALL.
 - PRODUCT SPECIFICATION: PS-19428-001.
 - PACKAGING SPECIFICATION: PK-19428-002.
 - MATES WITH: 19418 SERIES RECEPTACLE ASSEMBLIES.

PRODUCTION RELEASE EC NO: ETC2005-0213 DRAWN: JPWLICK 2005/06/14 CHECKED: JPWLICK 2005/06/14 APPROVED: RDEROSS 2005/06/14	QUALITY SYMBOLS ▽=0 ▽=0	GENERAL TOLERANCES (UNLESS SPECIFIED)	DIMENSION STYLE		SCALE 2:1	TITLE 16-WAY STRAIGHT HEADER ASSEMBLY, SHORT VERSION	MATERIAL NUMBER	TERMINAL PLATING
			mm	INCH			194280016	TIN
		4 PLACES ±---	±---	DRAWN BY	DATE	DESIGN UNITS	THIRD ANGLE PROJECTION	
		3 PLACES ±---	±.015	BRUPERT	04/06/16	INCH		
		2 PLACES ±0.38	±---	CHECKED BY	DATE			
		1 PLACE ±---	±---	JPWLICK	04/06/16			
		ANGULAR ± 1°	±---	APPROVED BY	DATE			
				RDEROSS	04/06/16			
		DRAFT WHERE APPLICABLE MUST REMAIN WITHIN DIMENSIONS		MATERIAL NO.	DOCUMENT NO.			
				SEE CHART	SD-19428-008			
				THIS DRAWING CONTAINS INFORMATION THAT IS PROPRIETARY TO MOLEX INCORPORATED AND SHOULD NOT BE USED WITHOUT WRITTEN PERMISSION				