



Distributor of Molex Connector Corporation: Excellent Integrated System Limited

Datasheet of 0197084023 - Connector Quick Connect Tab 0.187" (4.75mm) Solder

Contact us: sales@integrated-circuit.com Website: www.integrated-circuit.com

Excellent Integrated System Limited

Stocking Distributor

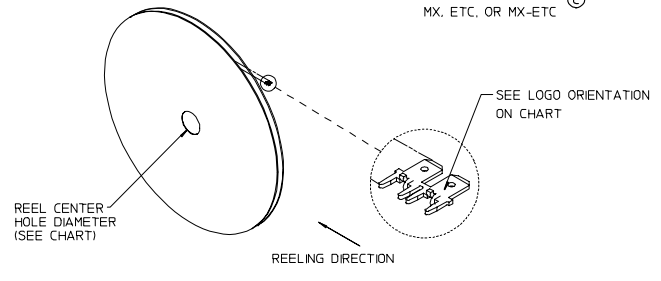
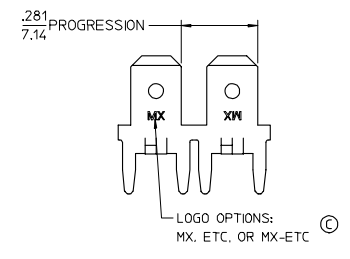
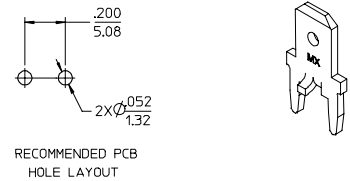
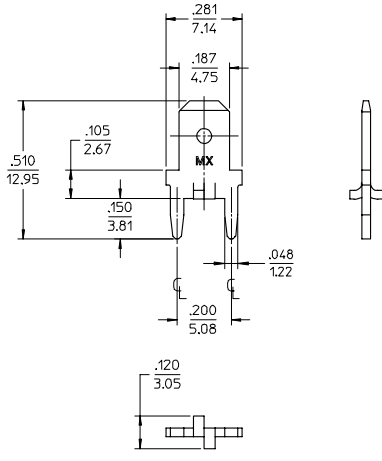
Click to view price, real time Inventory, Delivery & Lifecycle Information:

[Molex Connector Corporation](#)
[0197084023](#)

For any questions, you can email us directly:

sales@integrated-circuit.com

MATERIAL NUMBER	ENGINEERING NUMBER	CARRIER	TAB THICKNESS	LOGO ORIENTATION	REEL CENTER HOLE Ø REF.
197084023	19708-4023	STRIP	.020/0.51	IN	.750/19.05
197084033	19708-4033	STRIP	.032/0.81	IN	1.250/31.75



NOTES:

1. BARE EDGES PERMISSIBLE AT CARRIER CUT OFF.
2. MATERIAL: BRASS C26000
3. MATERIAL THICKNESS: SEE CHART
4. TAB CONFORMS TO NEMA SPECIFICATIONS.
5. ALL DIMENSIONS AND NOTES REFERENCE UNLESS OTHERWISE NOTED.
6. PLATING: MATTE TIN, 150µ IN/3.81µmm MINIMUM THICKNESS OVER NICKEL 50µ IN/1.25µmm MINIMUM THICKNESS.
7. REF.: 10,000 MINIMUM PARTS PER REEL, REEL HAS 24" DIAMETER REEL WITH A (SEE CHART) DIAMETER CENTER HOLE.
8. PART IS ROHS COMPLIANT.

ADDED LOGO OPTIONS & ROHS EC NO: ETC2007-0338 DRAWN BY: JPAWLICK CHKD: JMACNEIL APPR: JMACNEIL	QUALITY SYMBOLS ▽=0 ▽=0	GENERAL TOLERANCES (UNLESS SPECIFIED)		DIMENSION STYLE	SCALE	DESIGN UNITS	THIRD ANGLE PROJECTION	
		mm	INCH	IN/MM	4:1	INCH		
		4 PLACES	±.005	±.005	DRAWN BY	DATE	TITLE	
		3 PLACES	±.010	±.010	CHECKED BY	DATE	QUICK DISCONNECT, PCB MOUNT, .187 X .032/.020 TAB W/STABILIZERS	
		2 PLACES	±.013	±.013	APPROVED BY	DATE	MOLEX INCORPORATED	
		1 PLACE	±.025	±.025	APPROVED BY	DATE	MOLEX INCORPORATED	
		ANGULAR ± 1°		MATERIAL NO.	DOCUMENT NO.	SHEET NO.		
		DRAFT WHERE APPLICABLE MUST REMAIN WITHIN DIMENSIONS		SEE CHART	SD-19708-001	1 OF 1		
		THIS DRAWING CONTAINS INFORMATION THAT IS PROPRIETARY TO MOLEX INCORPORATED AND SHOULD NOT BE USED WITHOUT WRITTEN PERMISSION						