

## Excellent Integrated System Limited

Stocking Distributor

Click to view price, real time Inventory, Delivery & Lifecycle Information:

[Molex Connector Corporation](#)  
[0300700822](#)

For any questions, you can email us directly:

[sales@integrated-circuit.com](mailto:sales@integrated-circuit.com)

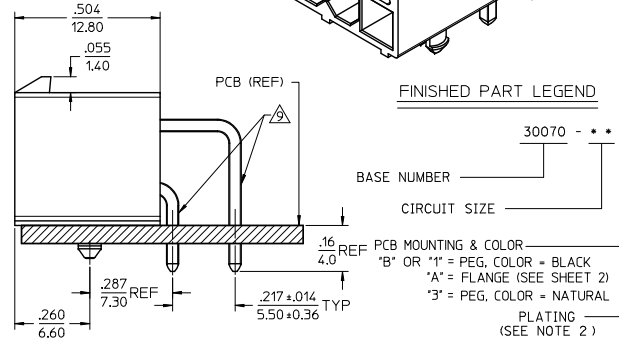
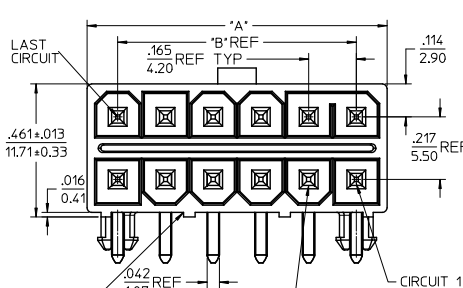
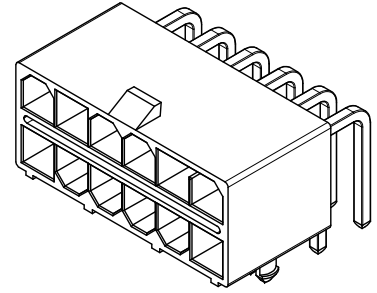
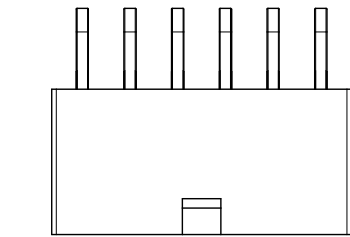
NATURAL HEADERS

30070-1232		12	GOLD	.1039	.827
30070-1235			TIN	(26.40)	(21.00)
30070-1032		10	GOLD	.874	.661
30070-1035			TIN	(22.20)	(16.80)
30070-0832		8	GOLD	.709	.496
30070-0835			TIN	(18.00)	(12.60)
30070-0632		6	GOLD	.543	.331
30070-0635			TIN	(13.80)	(8.40)
30070-0432		4	GOLD	.378	.165
30070-0435			TIN	(9.60)	(4.20)
30070-0232		2	GOLD	.213	
30070-0235			TIN	(5.40)	

BLACK HEADERS

30070-1212		12	GOLD	.1039	.827
30070-1215			TIN	(26.40)	(21.00)
30070-1012		10	GOLD	.874	.661
30070-1015			TIN	(22.20)	(16.80)
30070-0812		8	GOLD	.709	.496
30070-0815			TIN	(18.00)	(12.60)
30070-0612		6	GOLD	.543	.331
30070-0615			TIN	(13.80)	(8.40)
15-97-8048	30070-04B1	4	GOLD	.378	.165
15-97-8043	30070-04B3		TIN	(9.60)	(4.20)
15-97-8028	30070-02B1	2	GOLD	.213	
15-97-8023	30070-02B3		TIN	(5.40)	

PART NUMBER	ENG NUMBER	CKT. SIZE	PLATING	DIM 'A'	DIM 'B'
-------------	------------	-----------	---------	---------	---------

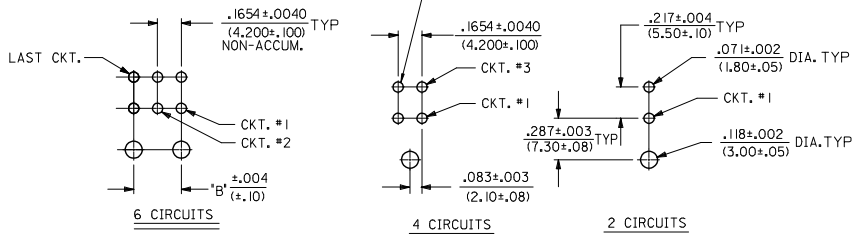


SHOWN WITH OPTIONAL CENTER RIBS  
MAY OR MAY NOT BE PRESENT  
DEPENDING ON CIRCUIT SIZE

NOTES:

- MATERIAL:  
HOUSING: POLYESTER, UNFILLED, UL94 V-0, COLOR: SEE CHART  
TERMINALS: BRASS
- TERMINAL PLATING:  
3 OR 5-.000100/(0.00254) MIN. MATTE TIN OVER .000050/(0.00127) MIN. NICKEL  
1 OR 2-.000030/(0.00076) MIN. SELECT GOLD AND .000100/(0.00254) MIN. SELECT MATTE TIN OVER .000050/(0.00127) MIN. NICKEL OVERALL
- PRODUCT SPECIFICATION: PS-5556-003
- PACKAGING: BULK PER PK-30070-001
- PART MATES WITH MINI-FIT JR. TPA RECEPTACLE 30067.
- PARTS ARE NOT TO BE MATED OR UNMATED WHILE CIRCUITS ARE LIVE.
- DISCOLORATION ON THE BANDOLIER CARRIER AREA OF THE PIN IS INHERENT TO THE PLATING PROCESS AND IS DUE TO THE MASKING EFFECT OF THE CARRIER. THIS DISCOLORATION IS IN A NON-FUNCTIONAL AREA OF THE PIN AND WILL NOT AFFECT THE PERFORMANCE OF THE HEADER ASSEMBLY.
- PARTS CONFORM TO CLASS "B" REQUIREMENTS OF COSMETIC SPECIFICATION PS-45499-002.
- FORMING MARKS ARE ACCEPTABLE.
- PARTS ARE NOT DESIGNED FOR CURRENT SHARING.

OPTION 1 AND 3  
PEG MOUNT  
SEE SHEET 2 FOR FLANGE MOUNT



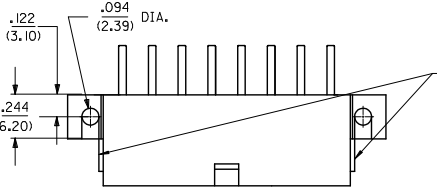
NOTE: DIMENSIONS SHOWN IN THIS VIEW ARE TYPICAL FOR ALL P.C.B. CONFIGURATIONS FROM 6-16 CIRCUITS.

RECOMMENDED HOLE LAYOUT FOR .070/(1.78) MAX. P.C.BOARD  
VIEWED FROM COMPONENT SIDE OF BOARD

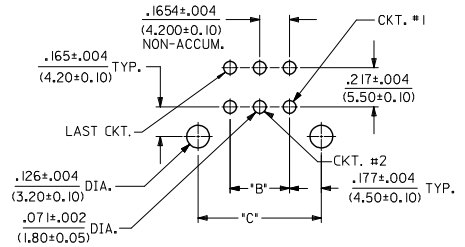
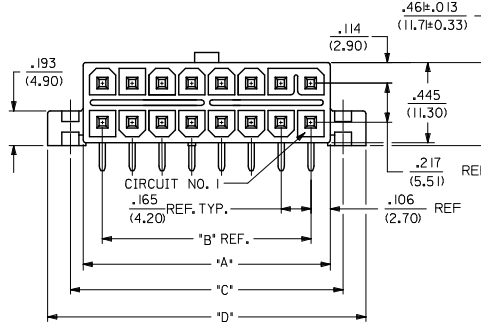
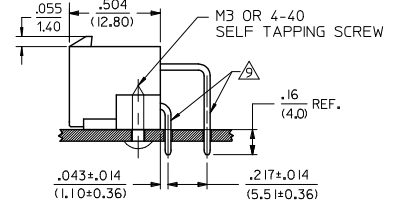
OBS P/N 'S EC NO: UCP2013-1811 DRAWN BY: DRWNBEE 2012/11/06 CHKD: JEBEL 2012/11/06 APPR: SMITH 2013/01/11 REV	QUALITY SYMBOLS ▽=0 ▽=0 ▽=0	GENERAL TOLERANCES (UNLESS SPECIFIED)		DIMENSION STYLE IN/MM		DRAWN BY: T GREGOR I	DATE: 2006/03/28	SCALE: 4:1	DESIGN UNITS: METRIC	THIRD ANGLE PROJECTION
		4 PLACES ±.010	±.010	mm	INCH	CHECKED BY: JCOMERC I	DATE: 2006/03/28	TITLE: MINI-FIT TPA RIGHT ANGLE HEADER ASSY		
		3 PLACES ±.025	±.014	ANGULAR ±1/2°		APPROVED BY: SSMITH	DATE: 2010/04/09	MOLEX INCORPORATED		
		2 PLACES ±.036	±.014	DRAFT WHERE APPLICABLE MUST REMAIN WITHIN DIMENSIONS		SEE TABLE		DOCUMENT NO.: SD-30070-001	SHEET NO. 1 OF 2	

BLACK FLANGE MOUNT HEADERS

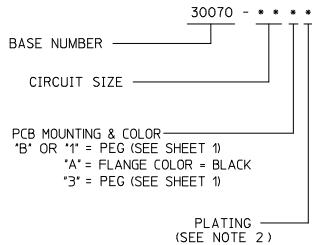
CKT. SIZE	PART NUMBER	ENG NUMBER	PLATING	DIM "A"	DIM "B"	DIM "C"	DIM "D"
2	15-97-8022	30070-02A3	TIN	.213	---	.354	.606
	15-97-8027	30070-02A1	GOLD	(5.40)	---	(9.00)	(15.40)
4	15-97-8042	30070-04A3	TIN	.378	.165	.520	.772
	15-97-8047	30070-04A1	GOLD	(9.60)	(4.20)	(13.20)	(19.60)
6	15-97-8062	30070-06A3	TIN	.543	.331	.685	.937
	15-97-8067	30070-06A1	GOLD	(13.80)	(8.40)	(17.40)	(23.80)
8	15-97-8082	30070-08A3	TIN	.709	.496	.850	1.102
	15-97-8087	30070-08A1	GOLD	(18.00)	(12.60)	(21.60)	(28.00)
10	15-97-8102	30070-10A3	TIN	.874	.661	1.016	1.268
	15-97-8107	30070-10A1	GOLD	(22.20)	(16.80)	(25.80)	(32.20)
12	15-97-8122	30070-12A3	TIN	1.039	.827	1.181	1.433
	15-97-8127	30070-12A1	GOLD	(26.40)	(21.00)	(30.00)	(36.40)
16	15-97-8162	30070-16A3	TIN	1.370	1.157	1.512	1.764
	15-97-8167	30070-16A1	GOLD	(34.80)	(29.40)	(38.40)	(44.80)



OPTION 2  
FLANGE MOUNT  
SEE SHEET 1 FOR PEG MOUNT



FINISHED PART LEGEND



RECOMMENDED HOLE LAYOUT FOR .070/(1.78) MAX. P.C. BOARD  
VIEWED FROM COMPONENT SIDE OF BOARD

QUALITY SYMBOLS	GENERAL TOLERANCES (UNLESS SPECIFIED)		DIMENSION STYLE		SCALE	DESIGN UNITS	THIRD ANGLE PROJECTION
	mm	INCH	IN/MM	DATE			
▽=0	4 PLACES ±---	±---	DRAWN BY	DATE	4:1	METRIC	MINI-FIT TPA RIGHT ANGLE HEADER ASSY
▽=0	3 PLACES ±---	±.010	TGREGOR I	2006/03/28			
▽=0	2 PLACES ±0.25	±.014	CHECKED BY	DATE	MOLEX INCORPORATED		
▽=0	1 PLACE ±0.36	±---	JCOMERC I	2006/03/28			
	ANGULAR ±1/2°		APPROVED BY	DATE	SD-30070-001		
			FSM1TH	2010/04/09			
	DRAFT WHERE APPLICABLE MUST REMAIN WITHIN DIMENSIONS		MATERIAL NO.	DOCUMENT NO.	SHEET NO. 2 OF 2		
			SEE TABLE				