

Excellent Integrated System Limited

Stocking Distributor

Click to view price, real time Inventory, Delivery & Lifecycle Information:

[Molex Connector Corporation](#)
[0300701025](#)

For any questions, you can email us directly:

sales@integrated-circuit.com

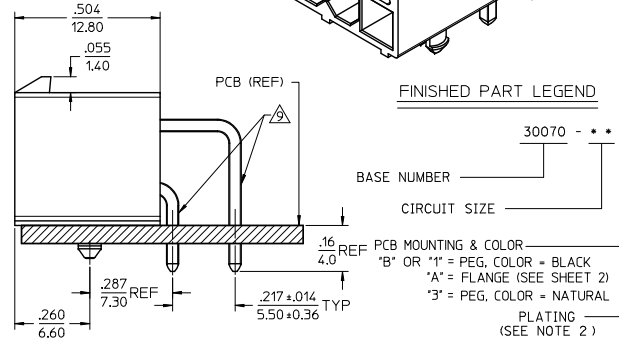
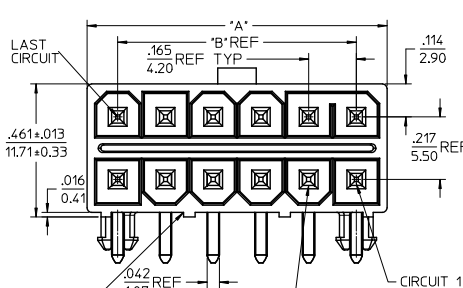
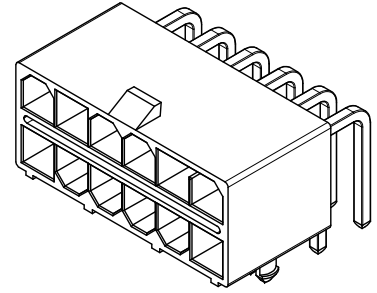
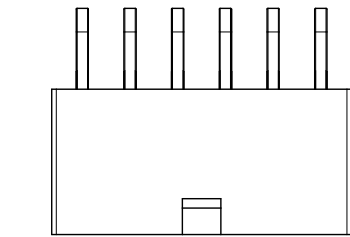
NATURAL HEADERS

30070-1232		12	GOLD	.1039	.827
30070-1235			TIN	(26.40)	(21.00)
30070-1032		10	GOLD	.874	.661
30070-1035			TIN	(22.20)	(16.80)
30070-0832		8	GOLD	.709	.496
30070-0835			TIN	(18.00)	(12.60)
30070-0632		6	GOLD	.543	.331
30070-0635			TIN	(13.80)	(8.40)
30070-0432		4	GOLD	.378	.165
30070-0435			TIN	(9.60)	(4.20)
30070-0232		2	GOLD	.213	
30070-0235			TIN	(5.40)	

BLACK HEADERS

30070-1212		12	GOLD	.1039	.827
30070-1215			TIN	(26.40)	(21.00)
30070-1012		10	GOLD	.874	.661
30070-1015			TIN	(22.20)	(16.80)
30070-0812		8	GOLD	.709	.496
30070-0815			TIN	(18.00)	(12.60)
30070-0612		6	GOLD	.543	.331
30070-0615			TIN	(13.80)	(8.40)
15-97-8048	30070-04B1	4	GOLD	.378	.165
15-97-8043	30070-04B3		TIN	(9.60)	(4.20)
15-97-8028	30070-02B1	2	GOLD	.213	
15-97-8023	30070-02B3		TIN	(5.40)	

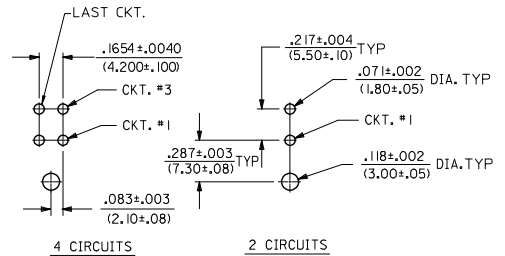
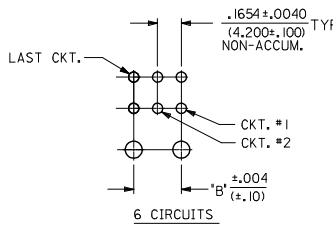
PART NUMBER	ENG NUMBER	CKT. SIZE	PLATING	DIM 'A'	DIM 'B'
-------------	------------	-----------	---------	---------	---------



- NOTES:
- MATERIAL: HOUSING: POLYESTER, UNFILLED, UL94 V-0, COLOR: SEE CHART; TERMINALS: BRASS.
 - TERMINAL PLATING: 3 OR 5-.000100/(0.00254) MIN. MATTE TIN OVER .000050/(0.00127) MIN. NICKEL; 1 OR 2-.000030/(0.00076) MIN. SELECT GOLD AND .000100/(0.00254) MIN. SELECT MATTE TIN OVER .000050/(0.00127) MIN. NICKEL OVERALL.
 - PRODUCT SPECIFICATION: PS-5556-003
 - PACKAGING: BULK PER PK-30070-001
 - PART MATES WITH MINI-FIT JR. TPA RECEPTACLE 30067.
 - PARTS ARE NOT TO BE MATED OR UNMATED WHILE CIRCUITS ARE LIVE.
 - DISCOLORATION ON THE BANDOLIER CARRIER AREA OF THE PIN IS INHERENT TO THE PLATING PROCESS AND IS DUE TO THE MASKING EFFECT OF THE CARRIER. THIS DISCOLORATION IS IN A NON-FUNCTIONAL AREA OF THE PIN AND WILL NOT AFFECT THE PERFORMANCE OF THE HEADER ASSEMBLY.
 - PARTS CONFORM TO CLASS "B" REQUIREMENTS OF COSMETIC SPECIFICATION PS-45499-002.
 - FORMING MARKS ARE ACCEPTABLE.
 - PARTS ARE NOT DESIGNED FOR CURRENT SHARING.

SHOWN WITH OPTIONAL CENTER RIBS
MAY OR MAY NOT BE PRESENT
DEPENDING ON CIRCUIT SIZE

OPTION 1 AND 3
PEG MOUNT
SEE SHEET 2 FOR FLANGE MOUNT



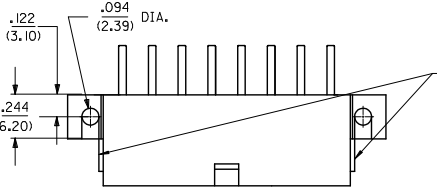
NOTE: DIMENSIONS SHOWN IN THIS VIEW ARE TYPICAL FOR ALL P.C.B. CONFIGURATIONS FROM 6-16 CIRCUITS.

RECOMMENDED HOLE LAYOUT FOR .070/(1.78) MAX. P.C.BOARD
VIEWED FROM COMPONENT SIDE OF BOARD

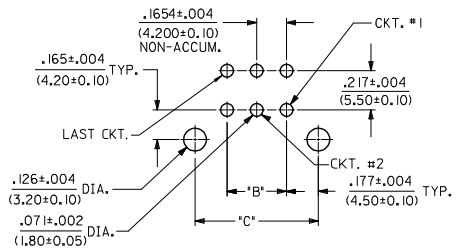
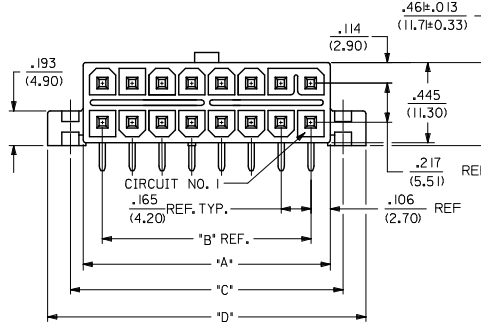
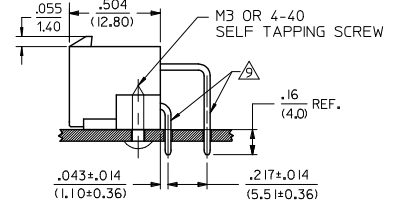
OBS P/N 'S	REV	QUALITY SYMBOLS	GENERAL TOLERANCES (UNLESS SPECIFIED)		DIMENSION STYLE		SCALE	DESIGN UNITS	THIRD ANGLE PROJECTION
			mm	INCH	IN/MM	4:1	METRIC	☉	
D1	REV	DESCRIPTION	4 PLACES ±.010	±.010	DRAWN BY	DATE	TITLE		
			3 PLACES ±.014	±.014	TGREGOR I	2006/03/28	MINI-FIT TPA RIGHT ANGLE HEADER ASSY		
			2 PLACES ±.025	±.025	CHECKED BY	DATE	MOLEX INCORPORATED		
			1 PLACE ±.036	±.036	JCOMERC I	2006/03/28	MATERIAL NO. SD-30070-001		
			ANGULAR ±1/2°		APPROVED BY	DATE	DOCUMENT NO.		
					SMITH	2010/04/09	SHEET NO. 1 OF 2		
			DRAFT WHERE APPLICABLE MUST REMAIN WITHIN DIMENSIONS		SEE TABLE		THIS DRAWING CONTAINS INFORMATION THAT IS PROPRIETARY TO MOLEX INCORPORATED AND SHOULD NOT BE USED WITHOUT WRITTEN PERMISSION		

BLACK FLANGE MOUNT HEADERS

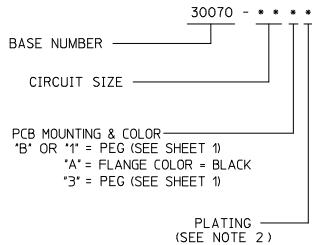
CKT. SIZE	PART NUMBER	ENG NUMBER	PLATING	DIM "A"	DIM "B"	DIM "C"	DIM "D"
2	15-97-8022	30070-02A3	TIN	.213	—	.354	.606
	15-97-8027	30070-02A1	GOLD	(5.40)	—	(9.00)	(15.40)
4	15-97-8042	30070-04A3	TIN	.378	.165	.520	.772
	15-97-8047	30070-04A1	GOLD	(9.60)	(4.20)	(13.20)	(19.60)
6	15-97-8062	30070-06A3	TIN	.543	.331	.685	.937
	15-97-8067	30070-06A1	GOLD	(13.80)	(8.40)	(17.40)	(23.80)
8	15-97-8082	30070-08A3	TIN	.709	.496	.850	1.102
	15-97-8087	30070-08A1	GOLD	(18.00)	(12.60)	(21.60)	(28.00)
10	15-97-8102	30070-10A3	TIN	.874	.661	1.016	1.268
	15-97-8107	30070-10A1	GOLD	(22.20)	(16.80)	(25.80)	(32.20)
12	15-97-8122	30070-12A3	TIN	1.039	.827	1.181	1.433
	15-97-8127	30070-12A1	GOLD	(26.40)	(21.00)	(30.00)	(36.40)
16	15-97-8162	30070-16A3	TIN	1.370	1.157	1.512	1.764
	15-97-8167	30070-16A1	GOLD	(34.80)	(29.40)	(38.40)	(44.80)



OPTION 2
FLANGE MOUNT
SEE SHEET 1 FOR PEG MOUNT



FINISHED PART LEGEND



RECOMMENDED HOLE LAYOUT FOR .070/(1.78) MAX. P.C. BOARD
VIEWED FROM COMPONENT SIDE OF BOARD

QUALITY SYMBOLS	GENERAL TOLERANCES (UNLESS SPECIFIED)		DIMENSION STYLE	SCALE	DESIGN UNITS	THIRD ANGLE PROJECTION
	mm	INCH	IN/MM	4:1	METRIC	
▽=0	4 PLACES ±---	±---	DRAWN BY	DATE	TITLE	MINI-FIT TPA RIGHT ANGLE HEADER ASSY
▽=0	3 PLACES ±---	±.010	TGREGOR I	2006/03/28		
▽=0	2 PLACES ±0.25	±.014	JCOMERC I	2006/03/28		
	1 PLACE ±0.36	±---	APPROVED BY	DATE		
	ANGULAR ±1/2°		SMITH	2010/04/09		
	DRAFT WHERE APPLICABLE MUST REMAIN WITHIN DIMENSIONS		MATERIAL NO.	DOCUMENT NO.	SHEET NO.	
			SEE TABLE	SD-30070-001	2 OF 2	