

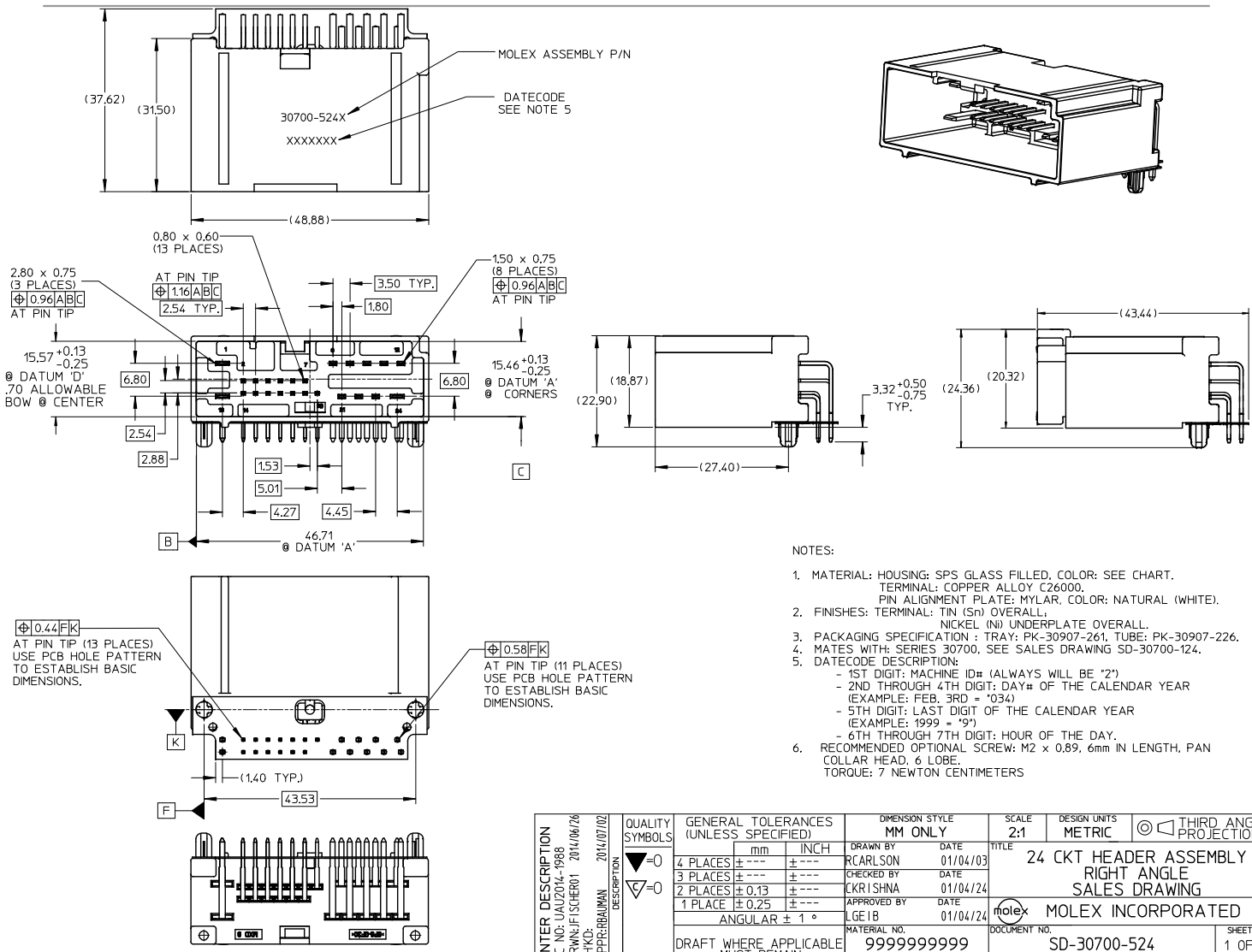
Excellent Integrated System Limited

Stocking Distributor

Click to view price, real time Inventory, Delivery & Lifecycle Information:

[Molex Connector Corporation](#)
[0307005240](#)

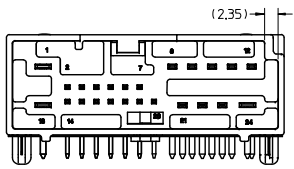
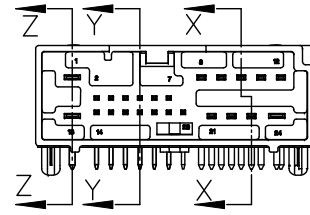
For any questions, you can email us directly:
sales@integrated-circuit.com



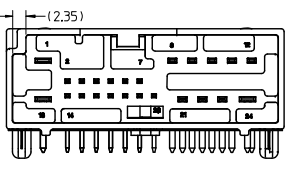
- NOTES:
1. MATERIAL: HOUSING: SPS GLASS FILLED, COLOR: SEE CHART. TERMINAL: COPPER ALLOY C26000. PIN ALIGNMENT PLATE: MYLAR, COLOR: NATURAL (WHITE).
 2. FINISHES: TERMINAL: TIN (Sn) OVERALL, NICKEL (Ni) UNDERPLATE OVERALL.
 3. PACKAGING SPECIFICATION : TRAY: PK-30907-261, TUBE: PK-30907-226.
 4. MATES WITH: SERIES 30700, SEE SALES DRAWING SD-30700-124.
 5. DATECODE DESCRIPTION:
 - 1ST DIGIT: MACHINE ID# (ALWAYS WILL BE '2')
 - 2ND THROUGH 4TH DIGIT: DAY# OF THE CALENDAR YEAR (EXAMPLE: FEB. 3RD = '034')
 - 5TH DIGIT: LAST DIGIT OF THE CALENDAR YEAR (EXAMPLE: 1999 = '9')
 - 6TH THROUGH 7TH DIGIT: HOUR OF THE DAY.
 6. RECOMMENDED OPTIONAL SCREW: M2 x 0.89, 6mm IN LENGTH, PAN COLLAR HEAD, 6 LOBE. TORQUE: 7 NEWTON CENTIMETERS

ENTER DESCRIPTION EC NO: 01/08/2014-1988 DRAWN BY: SHERO1 - 2014/06/26 CHKD: APPERBAUMANN APPROVED BY: APPERBAUMANN 2014/07/02 DESCRIPTION REV	QUALITY SYMBOLS	GENERAL TOLERANCES (UNLESS SPECIFIED)	DIMENSION STYLE	SCALE	DESIGN UNITS	THIRD ANGLE PROJECTION	TITLE 24 CKT HEADER ASSEMBLY RIGHT ANGLE SALES DRAWING MOLEX INCORPORATED MATERIAL NO. 9999999999 DOCUMENT NO. SD-30700-524 SHEET NO. 1 OF 2
	▽=0 ▽=0	mm INCH 4 PLACES ± --- ± --- 3 PLACES ± --- ± --- 2 PLACES ± 0.13 ± --- 1 PLACE ± 0.25 ± --- ANGULAR ± 1 °	MM ONLY DRAWN BY: R CARLSON DATE: 01/04/103 CHECKED BY: CKRISHNA DATE: 01/04/124 APPROVED BY: LG EIB DATE: 01/04/124	2:1	METRIC	MOLEX INCORPORATED	
	DRAFT WHERE APPLICABLE MUST REMAIN WITHIN DIMENSIONS	SIZE C	THIS DRAWING CONTAINS INFORMATION THAT IS PROPRIETARY TO MOLEX INCORPORATED AND SHOULD NOT BE USED WITHOUT WRITTEN PERMISSION				
	F1						

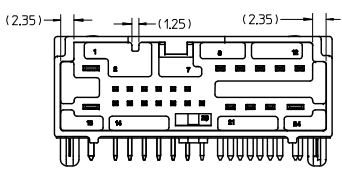
PACKAGING		POLARIZATION OPTIONS & COLOR		
ASSEMBLY P/N TRAY PACKED	ASSEMBLY P/N TUBE PACKED	RIGHT ANGLE HEADER ASSEMBLY (POLARIZATION OPTIONS)	HOUSING COLOR	TOOLED
30700-5240	30700-5244	POLARIZATION OPTION 'A'	GRAY	YES
30700-5241	30700-5245	POLARIZATION OPTION 'B'	BLACK	YES
30700-5242	30700-5246	POLARIZATION OPTION 'C'	NATURAL	NO



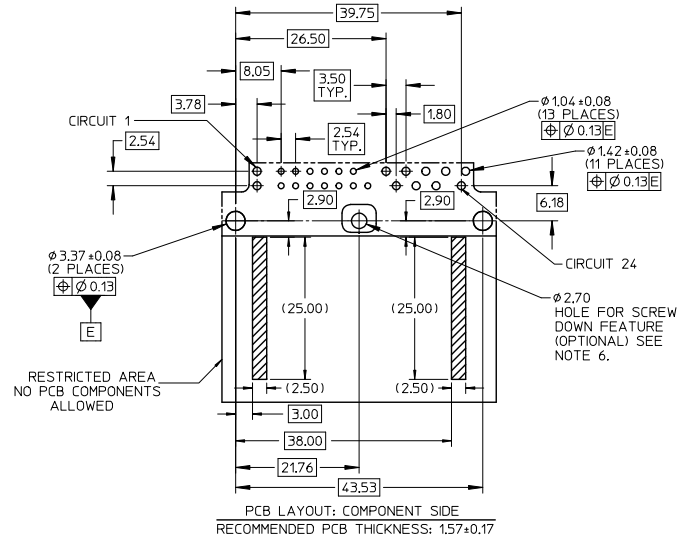
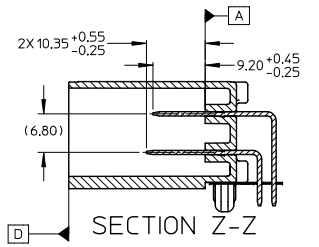
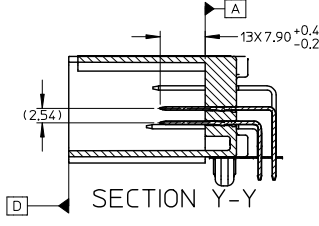
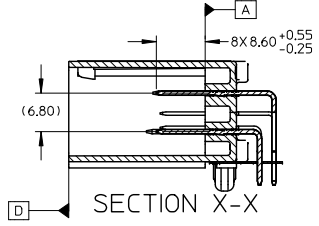
30700-5240/30700-5244
POLARIZATION 'A'



30700-5241/30700-5245
POLARIZATION 'B'



30700-5242/30700-5246
POLARIZATION 'C'



ENTER DESCRIPTION EC NO: UAU2014-9988 DRAWN: JF SHERO1 2014/06/26 CHKD: APPROV: RBAUMAN 2014/07/02 F1 REV	QUALITY SYMBOLS	GENERAL TOLERANCES (UNLESS SPECIFIED)	DIMENSION STYLE	SCALE	DESIGN UNITS	THIRD ANGLE PROJECTION
	$\nabla=0$ $\sphericalangle=0$	mm INCH 4 PLACES ± --- ± --- 3 PLACES ± --- ± --- 2 PLACES ± 0.13 ± --- 1 PLACE ± 0.25 ± --- ANGULAR ± 1°	MM ONLY	2:1	METRIC	
		DRAFT WHERE APPLICABLE MUST REMAIN WITHIN DIMENSIONS	MATERIAL NO. 9999999999	TITLE 24 CKT HEADER ASSEMBLY RIGHT ANGLE SALES DRAWING		MOLEX INCORPORATED
			DOCUMENT NO. SD-30700-524	SHEET NO. 2 OF 2		