

Excellent Integrated System Limited

Stocking Distributor

Click to view price, real time Inventory, Delivery & Lifecycle Information:

[Molex Connector Corporation](#)
[0340620022](#)

For any questions, you can email us directly:

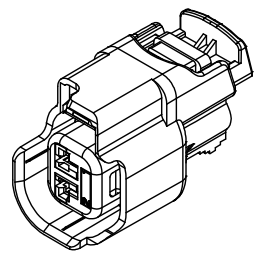
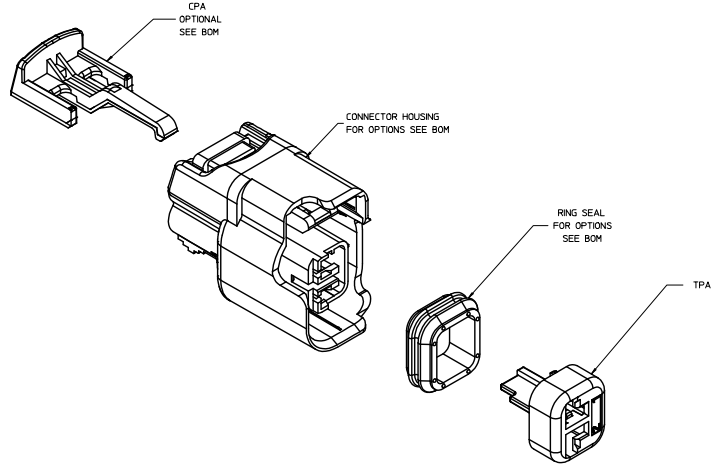
sales@integrated-circuit.com

20 19 18 17 16 15 14 13 12 11 10 9 8 7 6 5 4 3 2 1

TABLE OF CONTENTS	
SHEET NO.	SHEET DESCRIPTION
1	NOTES
2, 3	CONFIGURATIONS
4	RECEPTACLE CONNECTOR ASSEMBLY
5	MOLEX INTERFACE

NOTES: VALID UNLESS OTHERWISE SPECIFIED

1. GENERAL:
 - a. APPLICATION SPECIFICATION SEE: AS-34062-000
 -CONTAINS: PRODUCT INTRODUCTION, PRODUCT SUMMARY, CONNECTOR ASSEMBLY, PACKAGING INFORMATION, CONNECTOR MATING, SERVICE INSTRUCTIONS, ELECTRICAL CONTINUITY CHECKING, CRIMPING AND TROUBLESHOOTING.
 -DESIGNED TO MATE WITH DEVICE CONNECTION AS SPECIFIED IN DRAWING EWCAP-150-S-002-1-Z01, AVAILABLE AT <http://ewcpc.uscor.tek.com/>.
 -DESIGNED TO MATE WITH BLADE SEALED ASSEMBLY AS SPECIFIED IN DRAWING: SD-34675-001
 -ASSEMBLY SHIPPED WITH TPA IN PRE-LOCK (SEE TPA PRE-LOCK VIEW IN SHEET 4)
 - b. PRODUCT SPECIFICATION SEE: PS-34062-000
 -CONTAINS: SCOPE, PRODUCT DESCRIPTION, INTEGRAL COMPONENTS AND ACCESSORIES, APPLICABLE DOCUMENTS AND SPECIFICATIONS, RATINGS, PERFORMANCE, PACKAGING, GAUGE AND FIXTURES, AND OTHER INFORMATION.
 - c. PACKAGING SPECIFICATION PER MOLEX DRAWING: PK-30907-879
 - d. PARTS MUST BE IN COMPLIANCE TO MOLEX CHEMICAL SUBSTANCES FOR PRODUCTS AND PACKAGING SPECIFICATION: DCHS-699000-301
 - e. DATA MUST BE SUBMITTED UNDER THE MOLEX PART NUMBER TO MDS (COMPANY ID#13255)
2. DESIGN - MATERIALS:
 - a. SEE BOM TABLE IN SD-34062-004
3. DESIGN - GEOMETRY:
 - a. THIS IS A 100% CAD GENERATED PART. THE CAD MATHEMATICAL DATA IS THE MASTER FOR THIS PART. FOR DIMENSIONAL OR ANY INFORMATION NOT SHOWN ON THIS DRAWING, ANALYZE THE CAD MODEL
 - b. GEOMETRIC DIMENSIONS AND TOLERANCES PER ASME Y14.5M - 1994
 - c. EDGES AND UNDIMENSIONED DETAILS PER ISO13715
 - d. CORNERS SHOWN AS SHARP TO BE R.0Z MAX.
 - e. LETTERING SHALL BE 0.15 MAX RAISED IN 0.25 MAX RECESS PAD. THIS INCLUDES RECYCLING CODE, CAVITY ID, VENDOR IDENTIFICATION, AND CUSTOMER MATERIAL NUMBER.
 - f. VISUAL DEFECTS SHALL MEET COSMETIC STANDARD PS-45499-002 (Class B)
 - g. LASER MARKING: TBD



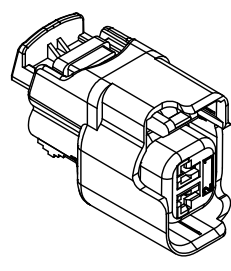
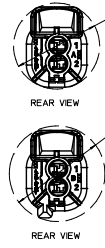
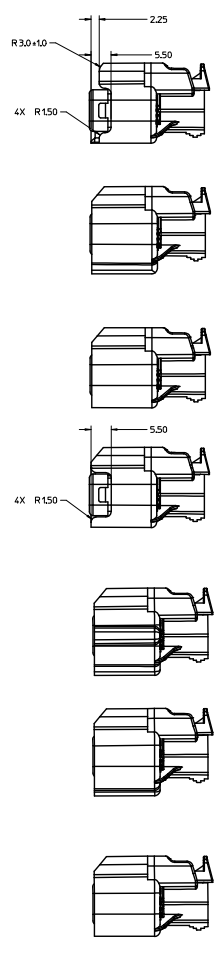
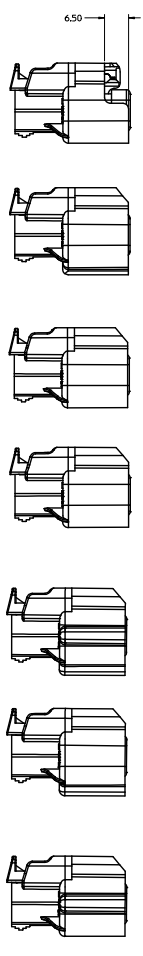
INSPECTION NUMBER LOG
 LAST NUMBER USED: ICD 64
 ADDED: ICD 64
 REMOVED: ICD 7, ICD 8, ICD 9,
 ICD 18, ICD 19, ICD 20, ICD 41, ICD 42

REV	DESCRIPTION
J18	ADDED DIM ICD 64

ENTER DESCRIPTION	QUALITY SYMBOLS	GENERAL TOLERANCES (UNLESS SPECIFIED)		DIMENSION STYLE		SCALE	DESIGN UNITS	THIRD ANGLE PROJECTION
		mm	INCH	MM ONLY				
EC: NO. VAL2016-1241	∇=0	4 PLACES ±----	±----	DRAWN BY	DATE	4:1	METRIC	MX150 2 WAY CABLE SEAL RECEPTACLE CONN. SYSTEM (5.0MM PITCH)
DRW: DRW180325K1/2016/02/18	∇=0	3 PLACES ±----	±----	KCUNNINGHAM	2011/11/08			
CHK: J18	∇=0	2 PLACES ±0.10	±----	CHECKED BY	DATE			
APP: J18	∇=0	1 PLACE ±0.3	±----	WVANS LAMBROU	1/26/2012			
REV		0 PLACE ±	±	APPROVED BY	DATE			
			ANGULAR ± 3 °	MATERIAL NO.	DOCUMENT NO.			
			DRAFT WHERE APPLICABLE MUST REMAIN WITHIN DIMENSIONS	SEE NOTE 2a.	SD-34062-002			
				THIS DRAWING CONTAINS INFORMATION THAT IS PROPRIETARY TO MOLEX INCORPORATED AND SHOULD NOT BE USED WITHOUT WRITTEN PERMISSION				

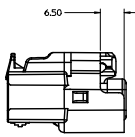
19 18 17 16 15 14 13 12 11 10 9 8 7 6 5 4 3 2 1

SHEET DESCRIPTION
CONFIGURATIONS

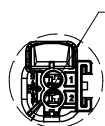
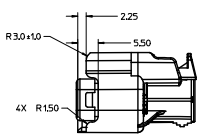


ENTER DESCRIPTION EC NO. VAJ204-1241 DRAWN BY: WANSIAMBROU / 2016/07/19 CHKD: J18 APPR: MISHRA / 2016/07/22 REV:	QUALITY SYMBOLS ∇=0 ∇=0 ∇=0	GENERAL TOLERANCES (UNLESS SPECIFIED) <table border="1"> <tr> <th></th> <th>mm</th> <th>INCH</th> </tr> <tr> <td>4 PLACES</td> <td>±0.15</td> <td>±0.005</td> </tr> <tr> <td>3 PLACES</td> <td>±0.20</td> <td>±0.008</td> </tr> <tr> <td>2 PLACES</td> <td>±0.30</td> <td>±0.012</td> </tr> <tr> <td>1 PLACE</td> <td>±0.50</td> <td>±0.020</td> </tr> <tr> <td>0 PLACE</td> <td>±0.75</td> <td>±0.030</td> </tr> </table> ANGULAR ± 3° DRAFT WHERE APPLICABLE MUST REMAIN WITHIN DIMENSIONS		mm	INCH	4 PLACES	±0.15	±0.005	3 PLACES	±0.20	±0.008	2 PLACES	±0.30	±0.012	1 PLACE	±0.50	±0.020	0 PLACE	±0.75	±0.030	DIMENSION STYLE MM ONLY DRAWN BY: KCUNNINGHAM / 2011/11/08 CHECKED BY: WANSIAMBROU / 1/26/2012 APPROVED BY:	SCALE 2:1 DESIGN UNITS METRIC	THIRD ANGLE PROJECTION MOLEX DOCUMENT NO. SD-34062-002 SHEET NO. 2 OF 3
		mm	INCH																				
	4 PLACES	±0.15	±0.005																				
	3 PLACES	±0.20	±0.008																				
2 PLACES	±0.30	±0.012																					
1 PLACE	±0.50	±0.020																					
0 PLACE	±0.75	±0.030																					
TITLE MX150 2 WAY CABLE SEAL RECEPTACLE CONN. SYSTEM (5.0MM PITCH)																							
SEE NOTE 2a. THIS DRAWING CONTAINS INFORMATION THAT IS PROPRIETARY TO MOLEX INCORPORATED AND SHOULD NOT BE USED WITHOUT WRITTEN PERMISSION																							
MATERIAL NO.																							

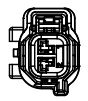
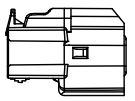
SHEET DESCRIPTION
CONFIGURATIONS



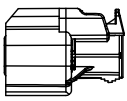
OPTION A WCLP-SLOT



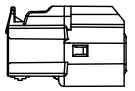
Ø25.50
MINIMUM PASS-THRU WITH
NO CLEARANCE
APPLIES TO CLIP-SLOT
OPTIONS A, C AND D



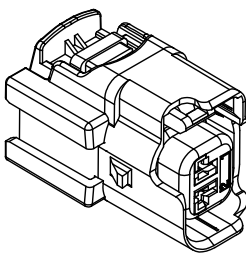
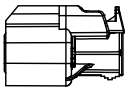
OPTION B WCLP-SLOT



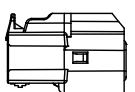
Ø26.00
MINIMUM PASS-THRU WITH
NO CLEARANCE
APPLIES TO CLIP-SLOT
OPTION B



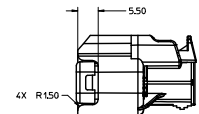
OPTION C WCLP-SLOT



CLIP-SLOT OPTION
SCALE 4:1



OPTION D WCLP-SLOT



*WITH CLIP-SLOT CONFIGURATIONS
DO NOT MEET THE USCAR PACKAGING FRAME REQUIREMENTS

ENTER DESCRIPTION EC NO. UAL2006-1241 DRAWN BY: DR. W. J. BOGUSKI 20/06/2019 CHKD: [blank] APPR: [blank] J18	QUALITY SYMBOLS ∇=0 ∇=0 ∇=0	GENERAL TOLERANCES (UNLESS SPECIFIED): mm INCH		DIMENSION STYLE MM ONLY	SCALE 2:1	DESIGN UNITS METRIC	THIRD ANGLE PROJECTION	
		4 PLACES ±---+--- 3 PLACES ±---+--- 2 PLACES ±0.10 1 PLACE ±0.3 0 PLACE ±		DRAWN BY: K. CUNNINGHAM 2011/11/08 CHECKED BY: [blank] APPROVED BY: M. VANSLAMBROU 1/26/2012	DATE: [blank]	TITLE MX150 2 WAY CABLE SEAL RECEPTACLE CONN. SYSTEM (5.0MM PITCH)		
		ANGULAR ±3° DRAFT WHERE APPLICABLE MUST REMAIN WITHIN DIMENSIONS		MATERIAL NO. [blank]	SEE NOTE 2a.	DOCUMENT NO. SD-34062-002	SHEET NO. 3 OF 5	
		THIS DRAWING CONTAINS INFORMATION THAT IS PROPRIETARY TO MOLEX INCORPORATED AND SHOULD NOT BE USED WITHOUT WRITTEN PERMISSION						

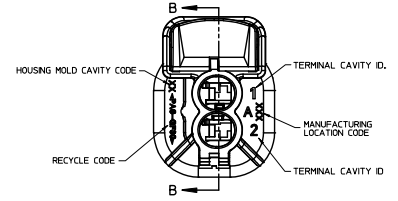
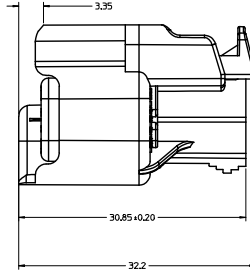
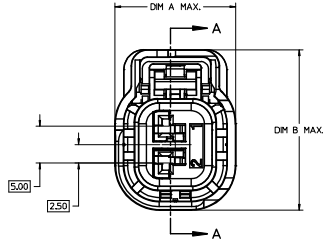
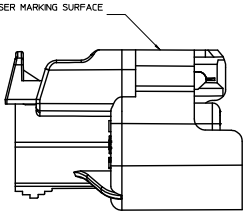
SHEET DESCRIPTION

RECEPTACLE CONNECTOR ASSEMBLY

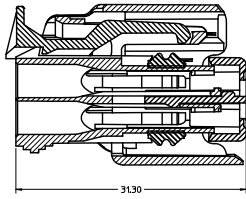
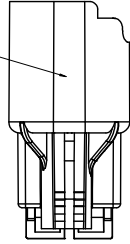
CHARTED DIMENSIONS

CONFIGURATIONS	DIMENSIONS	
	A	B
OPTIONS A, C, D	16.6	22.0
OPTION B	16.6	23.9
OPTION E	20.2	23.9
OPTION F	16.6	23.9
OPTION G	16.4	22.0
OPTIONS A, C, D W/CLIP-SLOT	19.2	22.0
OPTION B W/CLIP-SLOT	19.2	23.9

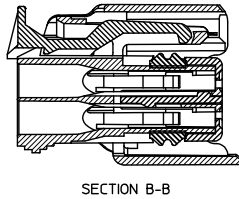
OPTIONAL LASER MARKING SURFACE
SEE NOTE 3g



OPTIONAL LASER MARKING SURFACE
SEE NOTE 3g

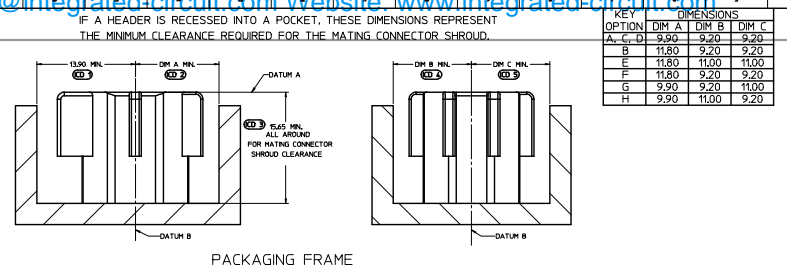
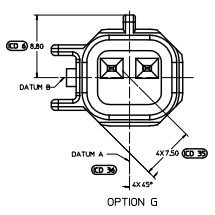
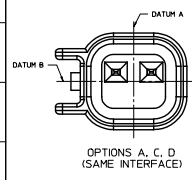


TPA SHOWN IN THE
PRE-STAGED POSITION
SECTION A-A

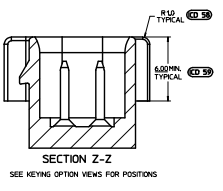
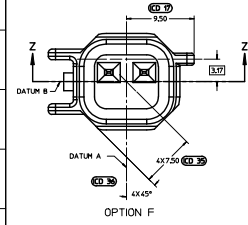
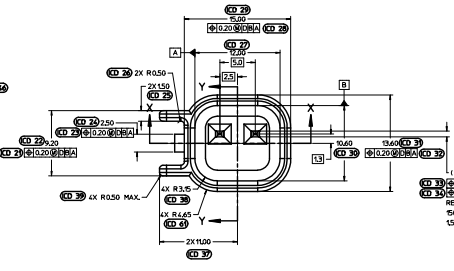
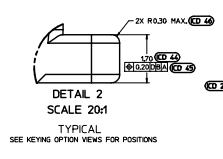
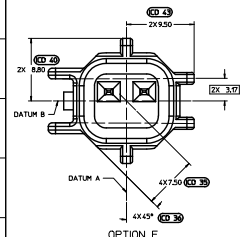
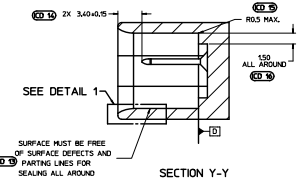
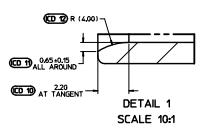
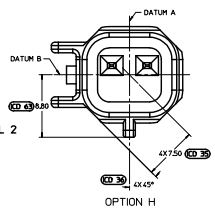
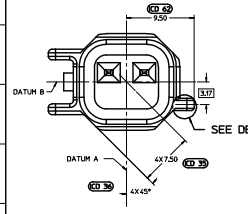
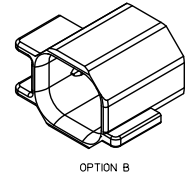


SECTION B-B
TPA SHOWN IN
FINAL-LOCK POSITION

ENTER DESCRIPTION EC NO. VAL2016-1241 DRAWN: WANSIAMBROU/2016/02/19 CHKD: APPR: MCKINLEY/2016/02/22 REV:	QUALITY SYMBOLS ∇=0 ∇=0 ∇=0	GENERAL TOLERANCES (UNLESS SPECIFIED) mm INCH 4 PLACES ± 0.15 ± 0.006 3 PLACES ± 0.25 ± 0.010 2 PLACES ± 0.50 ± 0.020 1 PLACE ± 0.75 ± 0.030 0 PLACE ± 1.50 ± 0.060 ANGULAR ± 3° DRAFT WHERE APPLICABLE MUST REMAIN WITHIN DIMENSIONS	DIMENSION STYLE MM ONLY DRAWN BY DATE KCUNNINGHAM 2011/11/08 CHECKED BY DATE WANSIAMBROU 1/26/2012 APPROVED BY DATE	SCALE 4:1 DESIGN UNITS METRIC THIRD ANGLE PROJECTION	TITLE MX150 2 WAY CABLE SEAL RECEPTACLE CONN. SYSTEM (5.0MM PITCH) molex DOCUMENT NO. SD-34062-002 SHEET NO. 4 OF 5
	MATERIAL NO. SEE NOTE 2a.		INCORPORATED AND SHOULD NOT BE USED WITHOUT WRITTEN PERMISSION		
	THIS DRAWING CONTAINS INFORMATION THAT IS PROPRIETARY TO MOLEX				
	INCORPORATED AND SHOULD NOT BE USED WITHOUT WRITTEN PERMISSION				



KEY	DIMENSIONS		
	OPTION	DIM A	DIM B
A, C, D	9.50	9.20	9.20
B	11.80	9.20	9.20
E	11.80	11.00	11.00
F	11.80	9.20	9.20
G	9.50	9.20	11.00
H	9.50	11.00	9.20

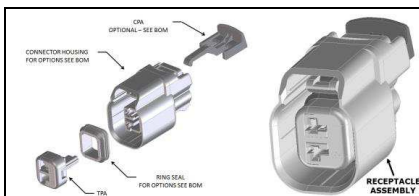


NOTES: UNLESS OTHERWISE SPECIFIED

- ALL DIMENSIONS SHOWN IN MILLIMETERS.
- DIMENSIONING AND TOLERANCING PER ASME Y14.5M-1994
- 0.25 RADI ON ALL CORNERS SHOWN SHARP.
- UNSPECIFIED RADII: 0.25 EXCEPT AS NOTED.
- STANDARD COLORS FOR POLARIZATION (SEE CHART). DEVIATION REQUIRES APPROVAL OF AUTHORIZED PERSON.
- REFER TO SAE/USCAR 12 CONNECTOR GUIDELINES FOR ADDITIONAL REQUIREMENTS.
- EXCEPT WHERE NOTED, DRAFT ON OUTSIDE SURFACES IS PERMISSIBLE WITHIN TOLERANCE.
- Symbol indicates draft direction.
- FOR TERMINAL MATERIAL, DIMENSIONAL, AND COATING REQUIREMENTS AND ANY BLADE TERMINAL DESIGN INFORMATION NOT SHOWN ON THIS DRAWING SEE EWCAP DWG. NO. EWCAP-001
- A FULL SHROUD ON THE MATING CONNECTOR IS REQUIRED TO ENSURE THAT THE CONNECTOR-HEADER POLARIZATION FEATURES (OPTIONS A THRU H) WILL FUNCTION. THE FULL SHROUD ALSO PREVENTS SCOOP DAMAGE TO THE HEADER PINS. REFER TO SAE/USCAR-12 CONNECTOR DESIGN GUIDE LINES FOR ADDITIONAL INFORMATION.
- REFER TO USCAR/EWCAP PART LIST AS FOUND ON WEBSITE <http://www.uscarteams.org>
- THIS IS A 100% CAD GENERATED PART. THE CAD MATHEMATICAL DATA IS THE MASTER FOR THIS PART. FOR DIMENSIONAL OR ANY INFORMATION NOT SHOWN ON THIS DRAWING, ANALYZE THE CAD MODEL.

A, C, D	BLACK	A	
B	LIGHT GRAY	B	
E	BLACK	E	NOT RECOMMENDED MATING CONNECTOR IS UNIVERSAL
F	LIGHT GRAY	D	
G	BLACK	C	
H	LIGHT GRAY	F	
OPTION	COLOR	SIMILAR TO AFL DRAWING R63461 (OPTION GEOMETRY IDENTICAL)	COMMENTS

ENTER DESCRIPTION REV. NO. LAUNCH DATE APP. NO. APPROVAL DATE APPROVED BY	QUALITY SYMBOLS	GENERAL TOLERANCES (UNLESS SPECIFIED)		DIMENSION STYLE		SCALE	DESIGN UNITS	THIRD ANGLE PROJECTION
		mm	INCH	MM ONLY	MM ONLY			
4 PLACES ± .010	▽=0					S1	METRIC	
3 PLACES ± .015	▽=0							
2 PLACES ± 0.30	▽=0							
1 PLACE ± 0.3	▽=0							
0 PLACE ± .	▽=0							
DRAFT WHERE APPLICABLE MUST REMAIN WITHIN DIMENSIONS		ANGULAR ± 3°		MATERIAL N/A		DOCUMENT NO. SD-34062-002		SHEET NO. 5 OF 5



ABBREVIATION	DESCRIPTION	DRAWING INFORMATION	ADDITIONAL INFORMATION
1	USCAR INTERFACE	150-S-002-1-001	LINK
2	MOLLEX INTERFACE	SD-3402-002 SHEET 5	
3	MOLLEX INLINE MALE CONNECTOR	E-34675-000	

ABBREVIATION	DESCRIPTION	COLOR	MATERIAL
A-BLK	HOUSING OPTION A	BLACK	PAGE 02/30
B-LG	HOUSING OPTION B	LIGHT GRAY	PAGE 02/30
C-BLK	HOUSING OPTION C	BLACK	PAGE 02/30
D-BLK	HOUSING OPTION D	BLACK	PAGE 02/30
E-LG	HOUSING OPTION E	LIGHT GRAY	PAGE 02/30
F-BLK	HOUSING OPTION F	BLACK	PAGE 02/30
G-LG	HOUSING OPTION G	LIGHT GRAY	PAGE 02/30
H-BLK	HOUSING OPTION H	BLACK	PAGE 02/30
A-BLK-CLIP	HOUSING OPTION A WITH CLIP/SLIP	BLACK	PAGE 02/30
B-LG-CLIP	HOUSING OPTION B WITH CLIP/SLIP	LIGHT GRAY	PAGE 02/30
C-BLK-CLIP	HOUSING OPTION C WITH CLIP/SLIP	BLACK	PAGE 02/30
D-BLK-CLIP	HOUSING OPTION D WITH CLIP/SLIP	BLACK	PAGE 02/30
E-LG-CLIP	HOUSING OPTION E WITH CLIP/SLIP	LIGHT GRAY	PAGE 02/30
F-BLK-CLIP	HOUSING OPTION F WITH CLIP/SLIP	BLACK	PAGE 02/30
G-LG-CLIP	HOUSING OPTION G WITH CLIP/SLIP	LIGHT GRAY	PAGE 02/30
H-BLK-CLIP	HOUSING OPTION H WITH CLIP/SLIP	BLACK	PAGE 02/30
D-BLK-SV	HOUSING OPTION D - SEVERE VIBRATION	BLACK	PAGE 02/30
D-BLK-SV	HOUSING OPTION D - SEVERE VIBRATION	BLACK	PAGE 02/30
R3	RING SEAL TEMP CLASS 3	MEDIUM BLUE	INHERENTLY LUBRICATED SILICONE
R4	RING SEAL TEMP CLASS 4	GREEN	INHERENTLY LUBRICATED SILICONE
TFA	INSTR. TFA	NATURAL	PBT 02/30

FOR ADDITIONAL INFORMATION SEE SD-3402-002

ASSEMBLY DESCRIPTION	ASSEMBLY PART NUMBER	COMPONENT				ASSEMBLY OPERATING TEMPERATURE	RECOMMENDED MATING DEVICE			PRODUCTION TOOL STATUS	COMMENTS
		THE PRESENCE OF AN ABBREVIATION INDICATES THE PRESENCE OF THAT COMPONENT.					1	2	3		
		HOUSING OPTION/COLOR	TFA	CFA	RING SEAL						
OPTION A, BLACK, W/O CPA	3402-0021	A-BLK	TFA	RS	RS	-40C TO 125C	0	2	0	SALEABLE	
OPTION B, LIGHT GRAY, W/O CPA	3402-0022	B-LG	TFA	RS	RS	-40C TO 125C	0	2	0	SALEABLE	
OPTION C, BLACK, W/O CPA	3402-0023	C-BLK	TFA	RS	RS	-40C TO 125C	0	2	0	SALEABLE	PREFERRED, FULLY SHROUDED
OPTION D, BLACK, W/O CPA	3402-0024	D-BLK	TFA	RS	RS	-40C TO 125C	0	2	0	SALEABLE	PREFERRED, FULLY SHROUDED
OPTION E, LIGHT GRAY, W/O CPA	3402-0025	E-LG	TFA	RS	RS	-40C TO 125C	0	2	0	SALEABLE	
OPTION F, BLACK, W/O CPA	3402-0026	F-BLK	TFA	RS	RS	-40C TO 125C	0	2	0	SALEABLE	
OPTION G, LIGHT GRAY, W/O CPA	3402-0027	G-LG	TFA	RS	RS	-40C TO 125C	0	2	0	SALEABLE	
OPTION H, BLACK, W/O CPA	3402-0028	H-BLK	TFA	RS	RS	-40C TO 125C	0	2	0	SALEABLE	PREFERRED, FULLY SHROUDED
OPTION A, BLACK, WITH CLIP/SLIP, W/O CPA	3402-0029	A-BLK-CLIP	TFA	RS	RS	-40C TO 125C	0	2	0	SALEABLE	
OPTION B, LIGHT GRAY, WITH CLIP/SLIP, W/O CPA	3402-0030	B-LG-CLIP	TFA	RS	RS	-40C TO 125C	0	2	0	SALEABLE	PREFERRED, FULLY SHROUDED
OPTION C, BLACK, WITH CLIP/SLIP, W/O CPA	3402-0031	C-BLK-CLIP	TFA	RS	RS	-40C TO 125C	0	2	0	SALEABLE	PREFERRED, FULLY SHROUDED
OPTION D, BLACK, WITH CLIP/SLIP, W/O CPA	3402-0032	D-BLK-CLIP	TFA	RS	RS	-40C TO 125C	0	2	0	SALEABLE	PREFERRED, FULLY SHROUDED
OPTION E, LIGHT GRAY, WITH CLIP/SLIP, W/O CPA	3402-0033	E-LG-CLIP	TFA	RS	RS	-40C TO 125C	0	2	0	SALEABLE	
OPTION F, BLACK, WITH CLIP/SLIP, W/O CPA	3402-0034	F-BLK-CLIP	TFA	RS	RS	-40C TO 125C	0	2	0	SALEABLE	
OPTION G, LIGHT GRAY, WITH CLIP/SLIP, W/O CPA	3402-0035	G-LG-CLIP	TFA	RS	RS	-40C TO 125C	0	2	0	SALEABLE	
OPTION H, BLACK, WITH CLIP/SLIP, W/O CPA	3402-0036	H-BLK-CLIP	TFA	RS	RS	-40C TO 125C	0	2	0	SALEABLE	PREFERRED, FULLY SHROUDED
OPTION A, BLACK, WITH CLIP/SLIP, W/O CPA	3402-0037	A-BLK-CLIP	TFA	RS	RS	-40C TO 125C	0	2	0	SALEABLE	
OPTION B, LIGHT GRAY, WITH CLIP/SLIP, W/O CPA	3402-0038	B-LG-CLIP	TFA	RS	RS	-40C TO 125C	0	2	0	SALEABLE	PREFERRED, FULLY SHROUDED
OPTION C, BLACK, WITH CLIP/SLIP, W/O CPA	3402-0039	C-BLK-CLIP	TFA	RS	RS	-40C TO 125C	0	2	0	SALEABLE	PREFERRED, FULLY SHROUDED
OPTION D, BLACK, WITH CLIP/SLIP, W/O CPA	3402-0040	D-BLK-CLIP	TFA	RS	RS	-40C TO 125C	0	2	0	SALEABLE	PREFERRED, FULLY SHROUDED
OPTION E, LIGHT GRAY, WITH CLIP/SLIP, W/O CPA	3402-0041	E-LG-CLIP	TFA	RS	RS	-40C TO 125C	0	2	0	SALEABLE	
OPTION F, BLACK, WITH CLIP/SLIP, W/O CPA	3402-0042	F-BLK-CLIP	TFA	RS	RS	-40C TO 125C	0	2	0	SALEABLE	PREFERRED, FULLY SHROUDED
OPTION G, LIGHT GRAY, WITH CLIP/SLIP, W/O CPA	3402-0043	G-LG-CLIP	TFA	RS	RS	-40C TO 125C	0	2	0	SALEABLE	
OPTION H, BLACK, WITH CLIP/SLIP, W/O CPA	3402-0044	H-BLK-CLIP	TFA	RS	RS	-40C TO 125C	0	2	0	SALEABLE	PREFERRED, FULLY SHROUDED
OPTION A, BLACK, WITH CLIP/SLIP, W/O CPA	3402-0045	A-BLK-CLIP	TFA	RS	RS	-40C TO 125C	0	2	0	SALEABLE	PREFERRED, FULLY SHROUDED
OPTION B, LIGHT GRAY, WITH CLIP/SLIP, W/O CPA	3402-0046	B-LG-CLIP	TFA	RS	RS	-40C TO 125C	0	2	0	SALEABLE	
OPTION C, BLACK, WITH CLIP/SLIP, W/O CPA	3402-0047	C-BLK-CLIP	TFA	RS	RS	-40C TO 125C	0	2	0	SALEABLE	PREFERRED, FULLY SHROUDED
OPTION D, BLACK, WITH CLIP/SLIP, W/O CPA	3402-0048	D-BLK-CLIP	TFA	RS	RS	-40C TO 125C	0	2	0	SALEABLE	PREFERRED, FULLY SHROUDED
OPTION E, LIGHT GRAY, WITH CLIP/SLIP, W/O CPA	3402-0049	E-LG-CLIP	TFA	RS	RS	-40C TO 125C	0	2	0	SALEABLE	
OPTION F, BLACK, WITH CLIP/SLIP, W/O CPA	3402-0050	F-BLK-CLIP	TFA	RS	RS	-40C TO 125C	0	2	0	SALEABLE	PREFERRED, FULLY SHROUDED
OPTION G, LIGHT GRAY, WITH CLIP/SLIP, W/O CPA	3402-0051	G-LG-CLIP	TFA	RS	RS	-40C TO 125C	0	2	0	SALEABLE	
OPTION H, BLACK, WITH CLIP/SLIP, W/O CPA	3402-0052	H-BLK-CLIP	TFA	RS	RS	-40C TO 125C	0	2	0	SALEABLE	PREFERRED, FULLY SHROUDED
OPTION A, BLACK, WITH CLIP/SLIP, W/O CPA	3402-0053	A-BLK-CLIP	TFA	RS	RS	-40C TO 125C	0	2	0	SALEABLE	PREFERRED, FULLY SHROUDED
OPTION B, LIGHT GRAY, WITH CLIP/SLIP, W/O CPA	3402-0054	B-LG-CLIP	TFA	RS	RS	-40C TO 125C	0	2	0	SALEABLE	
OPTION C, BLACK, WITH CLIP/SLIP, W/O CPA	3402-0055	C-BLK-CLIP	TFA	RS	RS	-40C TO 125C	0	2	0	SALEABLE	PREFERRED, FULLY SHROUDED
OPTION D, BLACK, WITH CLIP/SLIP, W/O CPA	3402-0056	D-BLK-CLIP	TFA	RS	RS	-40C TO 125C	0	2	0	SALEABLE	PREFERRED, FULLY SHROUDED
OPTION E, LIGHT GRAY, WITH CLIP/SLIP, W/O CPA	3402-0057	E-LG-CLIP	TFA	RS	RS	-40C TO 125C	0	2	0	SALEABLE	
OPTION F, BLACK, WITH CLIP/SLIP, W/O CPA	3402-0058	F-BLK-CLIP	TFA	RS	RS	-40C TO 125C	0	2	0	SALEABLE	PREFERRED, FULLY SHROUDED
OPTION G, LIGHT GRAY, WITH CLIP/SLIP, W/O CPA	3402-0059	G-LG-CLIP	TFA	RS	RS	-40C TO 125C	0	2	0	SALEABLE	
OPTION H, BLACK, WITH CLIP/SLIP, W/O CPA	3402-0060	H-BLK-CLIP	TFA	RS	RS	-40C TO 125C	0	2	0	SALEABLE	PREFERRED, FULLY SHROUDED