

## Excellent Integrated System Limited

Stocking Distributor

Click to view price, real time Inventory, Delivery & Lifecycle Information:

[Molex Connector Corporation](#)  
[0340832001](#)

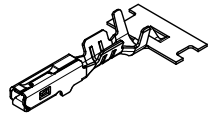
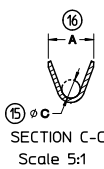
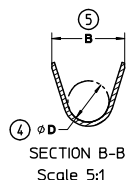
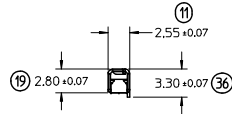
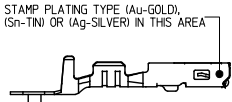
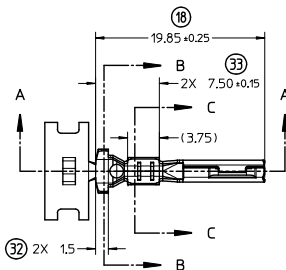
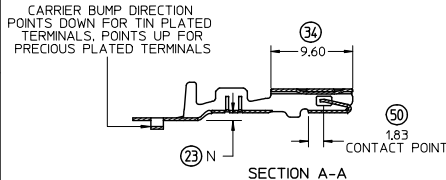
For any questions, you can email us directly:

[sales@integrated-circuit.com](mailto:sales@integrated-circuit.com)

TABLE 1 - TERMINAL PART NUMBER AND DIMENSION REFERENCE

| FAMILY | GENDER     | SEALING   | PLATING | PART NUMBER                          | PAYOFF DIRECTION | GRIP CODE | WIRE SIZES*                          | A<br>±0.3 | B<br>±0.20 | C<br>±0.3           | D<br>±0.15 | N<br>±0.10 | SPECIAL CHARACTERISTICS |
|--------|------------|-----------|---------|--------------------------------------|------------------|-----------|--------------------------------------|-----------|------------|---------------------|------------|------------|-------------------------|
| MX150  | RECEPTACLE | WIRE SEAL | Sn      | 34083-2003                           | RIGHT (B)        | 22        | 22AWG<br>0.35-0.50mm <sup>2</sup>    | 2.5       | 4.85       | 0.9                 | 2.90       | 0.55       | HIGH PERFORMANCE Sn     |
|        |            |           |         | 34083-3003                           | LEFT (D)         | 18        | 20/18AWG<br>0.75-1.00mm <sup>2</sup> | 3.3       | 5.00       | 1.3                 | 2.90       | 0.70       |                         |
|        |            |           |         | 34083-2002                           | RIGHT (B)        | 14        | 16/14AWG<br>1.50-2.00mm <sup>2</sup> | 3.6       | 5.00       | 1.7                 | 2.90       | 0.90       |                         |
|        |            |           |         | 34083-3002                           | LEFT (D)         | 22        | 22AWG<br>0.35-0.50mm <sup>2</sup>    | 2.5       | 4.85       | 0.9                 | 2.90       | 0.55       |                         |
|        |            |           |         | 34083-2001                           | RIGHT (B)        | 18        | 20/18AWG<br>0.75-1.00mm <sup>2</sup> | 3.3       | 5.00       | 1.3                 | 2.90       | 0.70       |                         |
|        |            |           |         | 34083-3001                           | LEFT (D)         | 14        | 16/14AWG<br>1.50-2.00mm <sup>2</sup> | 3.6       | 5.00       | 1.7                 | 2.90       | 0.90       |                         |
|        |            |           | Au      | 34081-2005                           | RIGHT (B)        | 22        | 22AWG<br>0.35-0.50mm <sup>2</sup>    | 2.5       | 4.85       | 0.9                 | 2.90       | 0.55       | HIGH PERFORMANCE Au     |
|        |            |           |         | 34081-3005                           | LEFT (D)         | 18        | 20/18AWG<br>0.75-1.00mm <sup>2</sup> | 3.3       | 5.00       | 1.3                 | 2.90       | 0.70       |                         |
|        |            |           |         | 34081-2004                           | RIGHT (B)        | 14        | 16/14AWG<br>1.50-2.00mm <sup>2</sup> | 3.6       | 5.00       | 1.7                 | 2.90       | 0.90       |                         |
|        |            |           |         | 34081-3004                           | LEFT (D)         | 22        | 22AWG<br>0.35-0.50mm <sup>2</sup>    | 2.5       | 4.85       | 0.9                 | 2.90       | 0.55       |                         |
|        |            |           |         | 34081-2003                           | RIGHT (B)        | 18        | 20/18AWG<br>0.75-1.00mm <sup>2</sup> | 3.3       | 5.00       | 1.3                 | 2.90       | 0.70       |                         |
|        |            |           |         | 34081-3003                           | LEFT (D)         | 14        | 16/14AWG<br>1.50-2.00mm <sup>2</sup> | 3.6       | 5.00       | 1.7                 | 2.90       | 0.90       |                         |
| Ag     | 34081-4003 | RIGHT (B) | 22      | 22AWG<br>0.35-0.50mm <sup>2</sup>    | 2.5              | 4.85      | 0.9                                  | 2.90      | 0.55       | HIGH PERFORMANCE Ag |            |            |                         |
|        | 34081-4002 | RIGHT (B) | 18      | 20/18AWG<br>0.75-1.00mm <sup>2</sup> | 3.3              | 5.00      | 1.3                                  | 2.90      | 0.70       |                     |            |            |                         |
|        | 34081-5003 | LEFT (D)  | 22      | 22AWG<br>0.35-0.50mm <sup>2</sup>    | 2.5              | 4.85      | 0.9                                  | 2.90      | 0.55       |                     |            |            |                         |
|        | 34081-4001 | RIGHT (B) | 18      | 20/18AWG<br>0.75-1.00mm <sup>2</sup> | 3.3              | 5.00      | 1.3                                  | 2.90      | 0.70       |                     |            |            |                         |
|        | 34081-5001 | LEFT (D)  | 14      | 16/14AWG<br>1.50-2.00mm <sup>2</sup> | 3.6              | 5.00      | 1.7                                  | 2.90      | 0.90       |                     |            |            |                         |

\* SEE AS-34083-002 FOR SPECIFIC WIRE TYPES



NOTES: (UNLESS OTHERWISE SPECIFIED)

- MATING TERMINAL SHOWN ON DRAWING SD-34080-001
- MATERIAL: ASTM B422, UNS C19025, HR04  
THICKNESS: 0.30 mm ±0.01  
TEMPER: FULL HARD (REF)  
TENSILE: 496 MIN MPA
- TIN PLATED TERMINAL FINISH  
OVERALL UNDERPLATE ELECTRODEPOSITED NICKEL  
OVERALL ELECTRODEPOSITED REFLOW TIN
- GOLD PLATED TERMINAL FINISH  
OVERALL UNDERPLATE ELECTRODEPOSITED  
DUCTILE SULFAMATE NICKEL  
CONTACT AREA - ELECTRODEPOSITED GOLD  
GRIP AREA - ELECTRODEPOSITED 100%  
TIN MATTE FINISH
- SILVER PLATED TERMINAL FINISH  
OVERALL UNDERPLATE ELECTRODEPOSITED  
DUCTILE SULFAMATE NICKEL  
CONTACT AREA - ELECTRODEPOSITED PURE SILVER  
(0.5% MAX IMPURITIES) SEMI-  
BRIGHT FINISH  
- SILVER ANTI-TARNISH : EVABRITE  
GRIP AREA - ELECTRODEPOSITED 100%  
TIN MATTE FINISH
- MEETS PERFORMANCE SPECIFICATION FOR CABLE TO TERMINAL ELECTRICAL CRIMPS PER SAE/USCAR-21 (5/2002)
- MEETS PERFORMANCE STANDARD FOR AUTOMOTIVE ELECTRICAL CONNECTOR SYSTEMS FOR SAE/USCAR-2 REV. 4 (TEMP CLASS 3) (5/2004)
- MEETS ELECTRICAL CONNECTION SYSTEM DESIGN SPECIFICATION (SDS) REV.11 (5/2002)
- MEETS FIELD CORRELATED LIFE TEST (FCLT) PER SAE/USCAR-20 (6/2004)
- INSERTION FORCE WITH INLINE BLADE TERMINAL: AVG. FORCE 3.1 N TIN (REFERENCE) 2.7 N GOLD (REFERENCE) 2.9 N SILVER (REFERENCE)
- REFERENCE FORD CAVITY SPECIFICATION 97BG-14474-ADA
- REFERENCE AS-34083-002 FOR CRIMP INFORMATION
- REFERENCE PK-31300-516 FOR REEL DIRECTION
- REFERENCE PS-34083-002 FOR PRODUCT SPECIFICATION

|   |                                      |                                       |      |                            |                   |                                       |                        |                        |  |
|---|--------------------------------------|---------------------------------------|------|----------------------------|-------------------|---------------------------------------|------------------------|------------------------|--|
| MINOR CORRECTIONS<br>EC NO: UAU2014-1574<br>DRAWN BY: JENNINGS01 2014/03/03<br>CHKD BY: DHIR 2014/06/11<br>APPROVED BY: MOSEER 2014/06/11 | QUALITY SYMBOLS<br>▽=0<br>▽=0<br>▽=0 | GENERAL TOLERANCES (UNLESS SPECIFIED) |      | DIMENSION STYLE<br>MM ONLY |                   | SCALE<br>3:1                          | DESIGN UNITS<br>METRIC | THIRD ANGLE PROJECTION |  |
|   |                                      | mm                                    | INCH | DRAWN BY<br>K. FERGUSON    | DATE<br>4/14/2009 | TITLE<br>MX 150 RECEPTACLE CABLE SEAL |                        |                        |  |
|   |                                      | 4 PLACES ±---                         | ±--- | CHECKED BY<br>A. DHIR      | DATE<br>4/14/2009 | molex                                 |                        |                        |  |
|   |                                      | 3 PLACES ±---                         | ±--- | APPROVED BY<br>B. MOSEER   | DATE<br>4/14/2009 |                                       |                        |                        |  |
| ANGULAR ± 3°  |                                      | MATERIAL NO.                          |      | DOCUMENT NO.               |                   | SHEET NO.                             |                        |                        |  |
| DRAFT WHERE APPLICABLE MUST REMAIN WITHIN DIMENSIONS  |                                      | SEE TABLE                             |      | SD-34083-002               |                   | 1 OF 1                                |                        |                        |  |
| THIS DRAWING CONTAINS INFORMATION THAT IS PROPRIETARY TO MOLEX INCORPORATED AND SHOULD NOT BE USED WITHOUT WRITTEN PERMISSION             |                                      |                                       |      |                            |                   |                                       |                        |                        |  |