

## Excellent Integrated System Limited

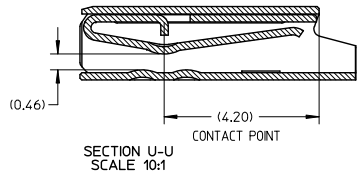
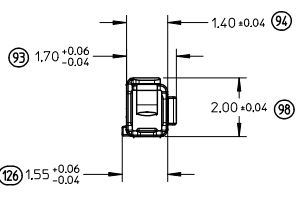
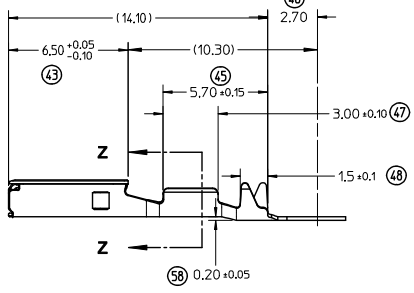
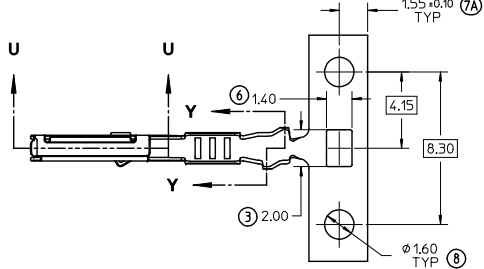
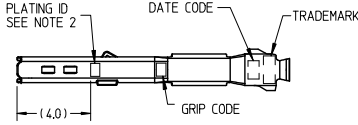
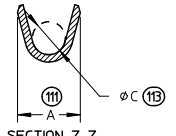
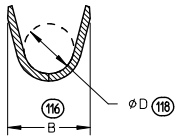
Stocking Distributor

Click to view price, real time Inventory, Delivery & Lifecycle Information:

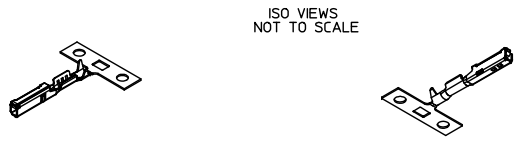
[Molex Connector Corporation](#)  
[0348030212](#)

For any questions, you can email us directly:

[sales@integrated-circuit.com](mailto:sales@integrated-circuit.com)



PART NUMBERS		GRIP CODE	WIRE GAUGE			PLATING	DIM A +0.20	DIM B +0.30	DIM ϕC +0.10	DIM ϕD +0.20
D-WIND (LEFT PAYOFF)	B-WIND (RIGHT PAYOFF)		ISO mm <sup>2</sup>	JASO mm <sup>2</sup>	SAE GAUGE					
34803-0211	34803-0213	S	0.22-0.35	0.3	22	TIN (Sn)	1.80	2.40	0.90	1.36
34803-0212	34803-0214	L	0.50-0.75	0.50-0.85	20	TIN (Sn)	2.15	2.50	1.20	1.72



- NOTES: (UNLESS OTHERWISE SPECIFIED)
1. MATERIAL: COPPER ALLOY
  2. PLATING MARK: TIN (Sn) - NO MARK
  3. PACKAGING PER SD-31301-053
  4. CRIMPING PER AS-502306-001
  5. PROBING AT ANY LOCATION ON THE TERMINAL BEAM IS NOT PERMITTED

ENTER DESCRIPTION E.C. NO.: UAI/2013-0899 DRAWN BY: D. HEMNANI 2012/12/11 CHKD: APPR: B. MOSER 2012/12/12 REV:	QUALITY SYMBOLS	GENERAL TOLERANCES (UNLESS SPECIFIED)	DIMENSION STYLE		SCALE	DESIGN UNITS	THIRD ANGLE PROJECTION
	▽=0 ▽=0		MM ONLY	5:1	METRIC		
	4 PLACES ± --- ± --- 3 PLACES ± 0.08 ± --- 2 PLACES ± 0.08 ± --- 1 PLACE ± 0.08 ± --- ANGULAR ± 1 °		DRAWN BY DATE K. FERGUSON 1-15-10 CHECKED BY DATE D. HEMNANI 1-15-10 APPROVED BY DATE B. MOSER 1-15-10	TITLE		CTX64 FEMALE TERMINAL	
	MATERIAL NO. SEE TABLE		MOLEX INCORPORATED DOCUMENT NO. SD-34803-001		SHEET NO. 1 OF 1		