

Excellent Integrated System Limited

Stocking Distributor

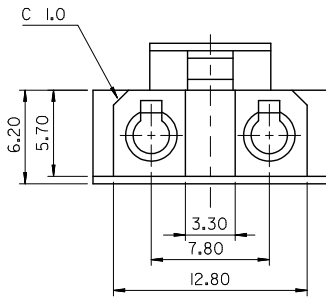
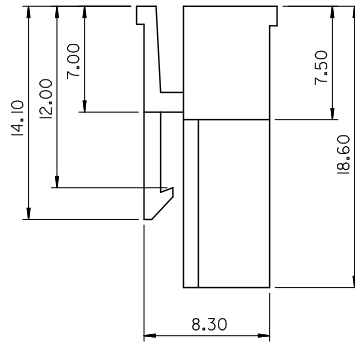
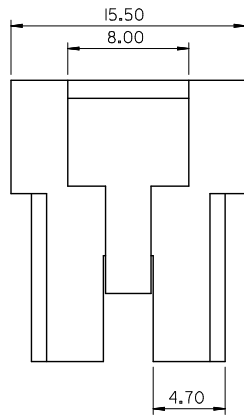
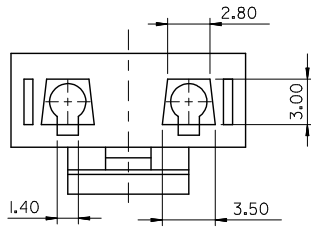
Click to view price, real time Inventory, Delivery & Lifecycle Information:

[Molex Connector Corporation](#)
[0351080294](#)

For any questions, you can email us directly:

sales@integrated-circuit.com

10 9 8 7 6 5 4 3 2 1



NOTES.

① 1. MATERIAL AND COLOR : SEE TABLE

ENG. NO.	COLOR	MATERIAL
35108-0291	BLACK	PET/PC UL94V-0
35108-0292	RED	
35108-0293	YELLOW	
35108-0294	BLUE	
35108-0295	GREEN	
35108-0296	WHITE	
35108-0299	VIOLET	

- 2. PRODUCT SPECIFICATION : PS-35108-001
- 3. MATES WAFER : 35204-02**
- 4. MATES TERMINAL : 35716-0110

REVISED EC. NO.: K0F2016-0086 DRAWN: SCHOONG3 2016/03/07 CHKD: SICHU 2016/03/07 APPR: YSK/INOZ 2016/03/31	QUALITY SYMBOLS ▽=0 ▽=0	GENERAL TOLERANCES (UNLESS SPECIFIED)		DIMENSION STYLE MM ONLY		SCALE	DESIGN UNITS METRIC	THIRD ANGLE PROJECTION	
		4 PLACES ± --- ± ---	3 PLACES ± --- ± ---	2 PLACES ± 0.30 ± ---	1 PLACE ± 0.30 ± ---	ANGULAR ± 3 °	DRAWN BY WY. YANG	DATE 1996/01/12	TITLE 2.36 DIA HOUSING-2P
B1	DESCRIPTION	DRAFT WHERE APPLICABLE MUST REMAIN WITHIN DIMENSIONS		MATERIAL NO. SEE TABLE		APPROVED BY C.W. LEE		DATE 1996/01/12	MOLEX INCORPORATED
				SIZE A3		DOCUMENT NO. SD-35108-002		SHEET NO. 1 OF 01	

9 8 7 6 5 4 3 2 1