

Excellent Integrated System Limited

Stocking Distributor

Click to view price, real time Inventory, Delivery & Lifecycle Information:

[Molex Connector Corporation](#)
[0351500394](#)

For any questions, you can email us directly:

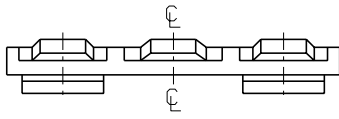
sales@integrated-circuit.com

ENG. NO. SD 35150-039*

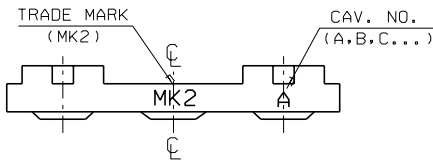
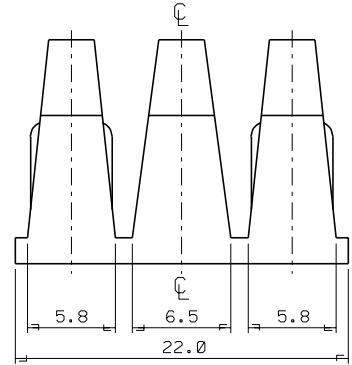
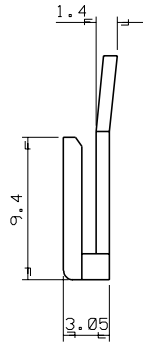
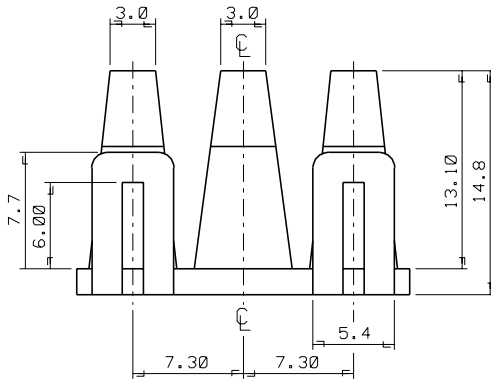
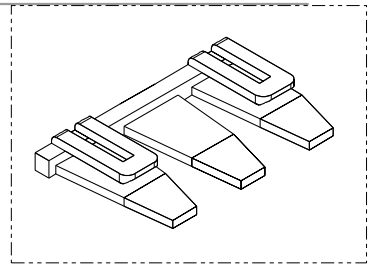
EDP NO.

SIMILAR ITEM

PROJECT NO. 070 W/W CONN*



- NOTES
- MATERIAL : NYLON 66 (UL94V-2)
 - COLOR : 35150-0390 (NATURAL)
35150-0392 (RED)
35150-0393 (YELLOW)
35150-0394 (BLUE)
 - MATCHED HOUSING : 35150-030*/031*
35151-031*
35150-060*/061*
35151-061*



		MATERIAL SEE NOTES		molex MOLEX-KOREA CO.,LTD.	
		GENERAL TOLERANCE DIMENSION : ±0.3 ANGLE : ±1°		DRAWN BY J.S.KANG CHK'D BY	
B	REVISED	95-127	95-11-22	APP'D BY SCALE 4/1	
A	NEW RELEASED	92-9-14		TITLE: 7.3 PITCH W/W CONN' T.P.A - 3P SHEET 1 OF 1	
LTR	REVISION RECORD	ECN	DATE	DESCRIPTION ENG. NO.	
REVISE ONLY ON CAD SYSTEM				ENG. NO. SD 35150-039* REV B	