

Excellent Integrated System Limited

Stocking Distributor

Click to view price, real time Inventory, Delivery & Lifecycle Information:

[Molex Connector Corporation](#)
[0351551302](#)

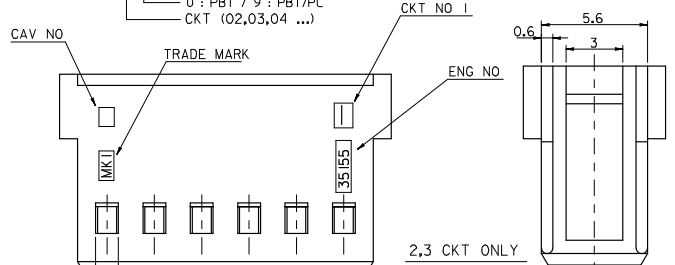
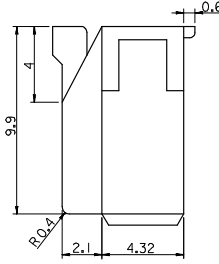
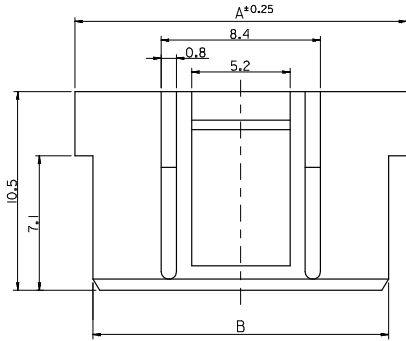
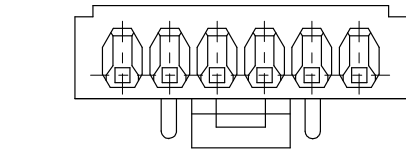
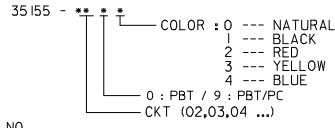
For any questions, you can email us directly:

sales@integrated-circuit.com

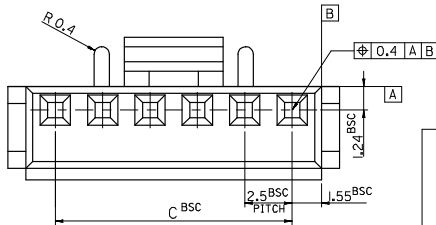
NOTE

1. MATERIAL : SEE TABLE
2. USED WITH TERMINAL : 5103-*
3. MATED WITH WAFER ASS'Y : 35312-***

LEGEND



35	38.1	40	3515515**	35155-15**	15
32.5	35.6	37.5	14**	-14**	14
30	33.1	35	13**	-13**	13
27.5	30.6	32.5	12**	-12**	12
25	28.1	30	11**	-11**	11
22.5	25.6	27.5	10**	-10**	10
20	23.1	25	09**	-09**	9
17.5	20.6	22.5	08**	-08**	8
15	18.1	20	07**	-07**	7
12.5	15.6	17.5	06**	-06**	6
10	13.1	15	05**	-05**	5
7.5	10.6	12.5	04**	-04**	4
5	8.1	10	03**	-03**	3
2.5	5.6	7.5	3515502**	35155-020**	2
C	B	A	MATERIAL NO.	ENG NO.	CKT.



REV	DESCRIPTION	QUALITY SYMBOLS		GENERAL TOLERANCES (UNLESS SPECIFIED)		DIMENSION STYLE		SCALE	DESIGN UNITS	THIRD ANGLE PROJECTION
		mm	INCH	mm	INCH	IN/MM	TITLE			
H	REVISED EC NO: KOR2008-0103 DRAWN: HAN 2007/12/13 CHKD: W. YANG 2007/12/13 APPR: TUNSTIKH 2007/12/13	4 PLACES	± ---	± ---	SK. HAN	2007/12/13	DRAWN BY DATE CHECKED BY DATE APPROVED BY DATE	5:1	METRIC	MOLEX INCORPORATED
		3 PLACES	± ---	± ---	MY. YANG	2007/12/13				
		2 PLACES	± ---	± ---	EH. JUNG	2007/12/13				
		1 PLACE	± 0.1	± ---			MATERIAL NO.			SD-35155-***0*
		ANGULAR ± 1°		DRAFT WHERE APPLICABLE MUST REMAIN WITHIN DIMENSIONS		SIZE	SEE TABLE			SHEET NO. 1 OF 1