

Excellent Integrated System Limited

Stocking Distributor

Click to view price, real time Inventory, Delivery & Lifecycle Information:

[Molex Connector Corporation](#)
[0351890110](#)

For any questions, you can email us directly:

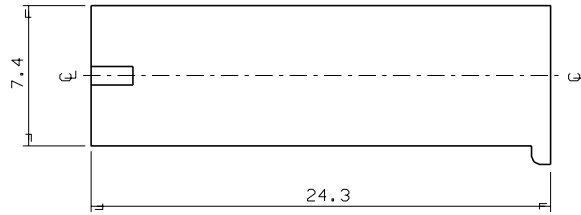
sales@integrated-circuit.com

ENG. NO. SD 35189-011

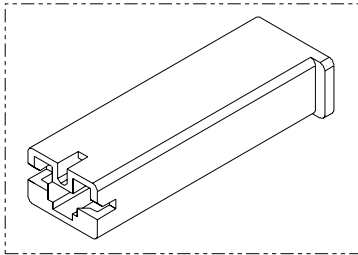
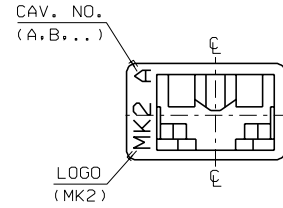
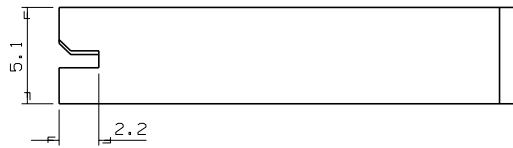
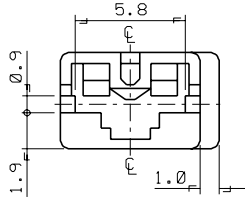
EDP NO.

SIMILAR ITEM

PROJECT NO. .187 MP-LOCK CONN



- NOTES
1. MATERIAL : NYLON 66
35189-0110 (UL94V-2)
35189-0111 (UL94V-0)
 2. COLOR : NATURAL
 3. APPLICABLE TERMINAL : 35068-9**2



			MATERIAL	SEE NOTES	MOLEX-KOREA CO.,LTD.		
			GENERAL TOLERANCE DIMENSION : +0.3 ANGLE : +1°				
C	REVISED	96.137	96.12.24	DIMENSION CLASSIFICATION ▽ : CRITICAL ▼ : MAJOR () : REFERENCE		DRAWN BY J. S. KANG	CHK'D BY
B	REVISED		96.9.20			APP'D BY	SCALE 5/1
A	NEW RELEASED		96.4.25			TITLE :	
LTR REVISION RECORD			ECN	DATE	ASS'Y PART DESCRIPTION ENG. NO.		SHEET 1 OF 1
REVISE ONLY ON CAD SYSTEM					.187 MP-LOCK HSG-1P		REV C
					ENG. NO. SD 35189-011		

S35189.DGN

THIS DRAWING CONTAINS INFORMATION THAT IS PROPRIETARY TO MOLEX(KOREA) AND SHOULD NOT BE USED WITHOUT WRITTEN PERMISSION MX-A3(ANSI:290,420)