

Excellent Integrated System Limited

Stocking Distributor

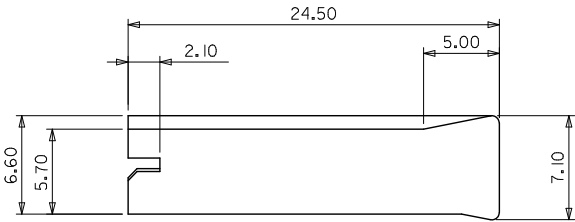
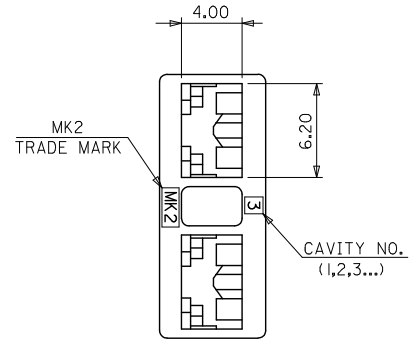
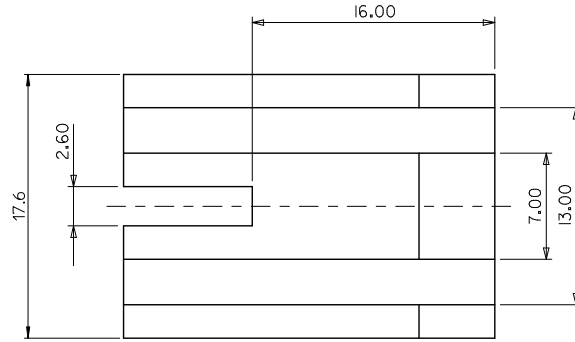
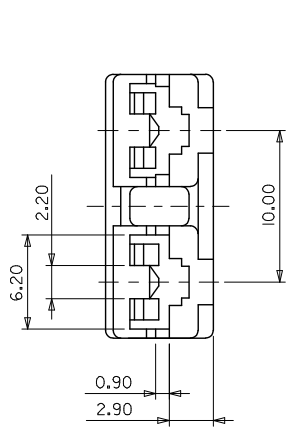
Click to view price, real time Inventory, Delivery & Lifecycle Information:

[Molex Connector Corporation](#)
[0351890281](#)

For any questions, you can email us directly:

sales@integrated-circuit.com

10 9 8 7 6 5 4 3 2 1



NOTES

1. MATERIALS : POLYAMIDE66, UNFILLED, UL94V-0; COLOR: NATURAL(WHITE)
2. PRODUCT SPECIFICATION: PS-35189-004
3. USE WITH: .187 MP-LOCK RECEPTACLE TERMINAL SERIES 35068

ENG NO. (MATERIAL NO.)	RIB TYPE	
35189-0281 (351890281)		BOTH RIB TYPE.
35189-7281 (351897281)		LEFT RIB TYPE.
35189-8281 (351898281)		RIGHT RIB TYPE.

REVISED EC NO: B1 DRAWN: JSSHN CHKD: SICHU APPR: 2012/12/24 2012/12/24	QUALITY SYMBOLS ▽=0 ▽=0	GENERAL TOLERANCES (UNLESS SPECIFIED)		DIMENSION STYLE MM ONLY		SCALE 4:1	DESIGN UNITS METRIC	THIRD ANGLE PROJECTION
		4 PLACES ± --- ± --- 3 PLACES ± --- ± --- 2 PLACES ± 0.25 ± --- 1 PLACE ± 0.25 ± --- ANGULAR ± 1°	DRAWN BY SK. HAN DATE 2008/01/02	CHECKED BY WY. YANG DATE 2008/01/02	APPROVED BY EH. JUNG DATE 2008/01/02	TITLE .187 MP-LOCK HOUSING -2P 10MM PITCH		MOLEX INCORPORATED
DRAFT WHERE APPLICABLE MUST REMAIN WITHIN DIMENSIONS		SEE TABLE		MATERIAL NO.		DOCUMENT NO. SD-35189-*281	THIS DRAWING CONTAINS INFORMATION THAT IS PROPRIETARY TO MOLEX INCORPORATED AND SHOULD NOT BE USED WITHOUT WRITTEN PERMISSION	

ib_frame_A3_P_ME_1
Rev. E 2006/04/15

9 8 7 6 5 4 3 2 1