



Distributor of Molex Connector Corporation: Excellent Integrated System Limited
Datasheet of 0354301900 - Connector Quick Connect Receptacle 12-14 AWG Crimp

Contact us: sales@integrated-circuit.com Website: www.integrated-circuit.com

Excellent Integrated System Limited

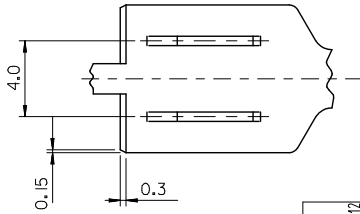
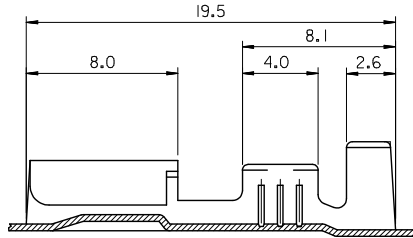
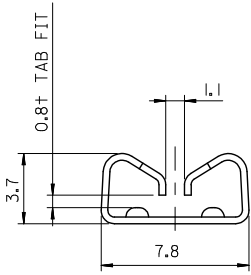
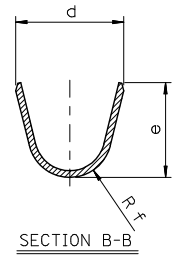
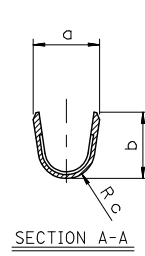
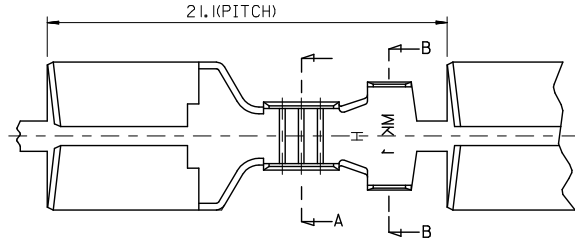
Stocking Distributor

Click to view price, real time Inventory, Delivery & Lifecycle Information:

[Molex Connector Corporation](#)
[0354301900](#)

For any questions, you can email us directly:

sales@integrated-circuit.com



PART NO.	a	b	c	d	e	Rf	WIRE RANGE (mmSq)	Q'TY/REEL	FINISH	REMARK (OPTION)
35427-9700									UNPLATED	
-9702	S	2.8	2.8	0.9	3.8	3.8	0.3 ± 0.5	5000	PLATED	
-9710									UNPLATED	MARK 'H'
35427-9800									UNPLATED	
-9802	M	3.0	3.5	1.2	5.0	5.0	0.85 ± 1.25	5000	PLATED	
-9810									UNPLATED	MARK 'H'
35427-9900									UNPLATED	
-9902	L	5.2	4.6	2.0	6.3	6.3	2.0 ± 3.0	4000	PLATED	
-9910									UNPLATED	MARK 'H'

NOTES

- 1. MATERIAL : BRASS (C2600), THICK = 0.35mm
- 2. TENSION (35427-970*,980*,990*)
 - INSERTION FORCE(INITIAL) : 0.9 ~ 1.2 kgf
 - WITHDRAWAL FORCE(6 TIMES) : 0.4 kgf MIN.
- TENSION (35427-971*,981*,991*) 'H' MARK
 - INSERTION FORCE(INITIAL) : 1.5 ~ 2.0 Kgf
 - WITHDRAWAL FORCE(6 TIMES) : 0.8kgf MIN.

CHANGED NOTE #2 EC NO.: KTR2013-0047 DRAWN: HIMOON 2013/06/12 CHKD: JYCHOI APPR: JYCHOI 2013/07/29	QUALITY SYMBOLS	GENERAL TOLERANCES (UNLESS SPECIFIED)	DIMENSION STYLE	SCALE	DESIGN UNITS	THIRD ANGLE PROJECTION
	▽=0 ▽=0	mm INCH 4 PLACES ± --- ± --- 3 PLACES ± --- ± --- 2 PLACES ± 0.3 ± --- 1 PLACE ± 0.3 ± --- ANGULAR ± 3°	MM ONLY	5:1	METRIC	DRAWN BY DATE HIMOON 2013/06/12 CHECKED BY DATE BCYOON 2013/06/12 APPROVED BY DATE
		DRAFT WHERE APPLICABLE MUST REMAIN WITHIN DIMENSIONS	MATERIAL NO.	MOLEX INCORPORATED	DOCUMENT NO.	TITLE
		SEE TABLE	SD-35427-002	MOLEX INCORPORATED	SD-35427-002	POWERMATE FEMALE TERM. (S,M,L)