

Excellent Integrated System Limited

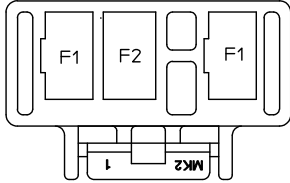
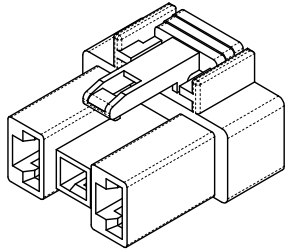
Stocking Distributor

Click to view price, real time Inventory, Delivery & Lifecycle Information:

[Molex Connector Corporation](#)
[0355720300](#)

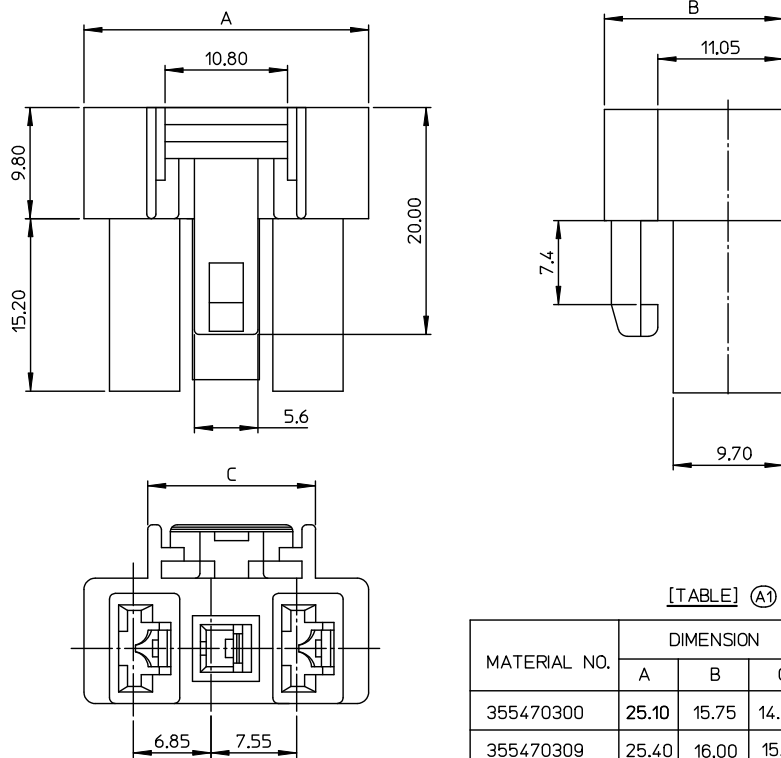
For any questions, you can email us directly:

sales@integrated-circuit.com



F1 TERMINAL : 35725-5*10
F2 TERMINAL : 35766-0*10

TERMINAL PATTERN



[TABLE] (A1)

MATERIAL NO.	DIMENSION			MATERIAL
	A	B	C	
355470300	25.10	15.75	14.80	POLYESTER
355470309	25.40	16.00	15.10	PET/PC

NOTES

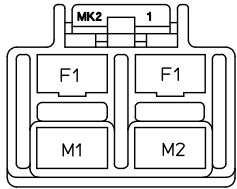
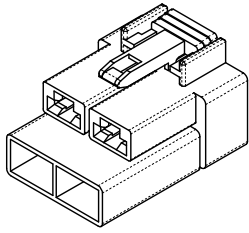
- MATERIAL :
① 35547-0300 : POLYESTER(PBT), NO GLASS FILLED, UL94V-0
COLOR : NATURAL

- (A1) ② 35547-0309 : PET/PC, NO GLASS FILLED, UL94V-0
COLOR : NATURAL

- PRODUCT SPECIFICATION : PS-35546-001
- PACKING SPECIFICATION : PK-35547-001
- MATED HOUSING : 35546-070*
- APPLICABLE TERMINAL : 35725-5*10
35766-0*10

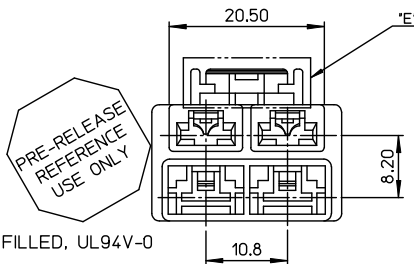
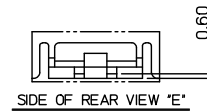
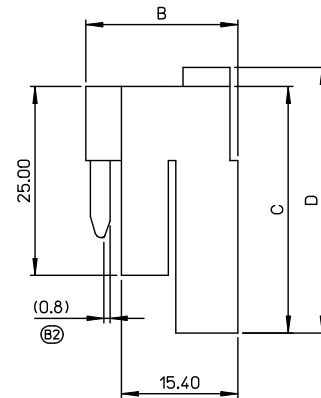
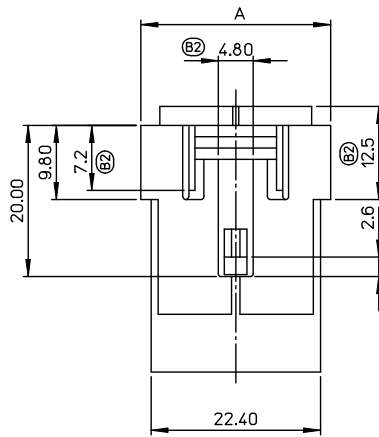
PRELIMINARY REVISED EC NO: KOR2013-0051 DRAWN: JSSHIN 2012/12/20 CHKD: SJCHU 2012/12/20 APPR: YSK(M02) 2012/12/21	QUALITY SYMBOLS ▽=0 ▽=0	GENERAL TOLERANCES (UNLESS SPECIFIED)		DIMENSION STYLE MM ONLY		SCALE 4:1	DESIGN UNITS METRIC	THIRD ANGLE PROJECTION
		mm	INCH	DRAWN BY	DATE			
A1	DESCRIPTION	4 PLACES	±---	±---	WY. YANG	1997/11/12	.250 MULTI W-T-W CONN. PLUG HOUSING -3P	
		3 PLACES	±---	±---	CHECKED BY	DATE		
		2 PLACES	±0.30	±---	BK. CHOI	1997/11/12		
		1 PLACE	±0.30	±---	APPROVED BY	DATE		
		0 PLACE	±	±	CW. LEE	1997/11/12		
ANGULAR ± 3 °		DRAFT WHERE APPLICABLE MUST REMAIN WITHIN DIMENSIONS		MATERIAL NO.	SEE TABLE	DOCUMENT NO.	SHEET NO. 1 OF 1	
SIZE A3						THIS DRAWING CONTAINS INFORMATION THAT IS PROPRIETARY TO MOLEX INCORPORATED AND SHOULD NOT BE USED WITHOUT WRITTEN PERMISSION		

10 9 8 7 6 5 4 3 2 1



F1 TERMINAL : 35725-5*10
M1 TERMINAL : 35453-9*02
M2 TERMINAL : 35452-9*02
F = FEMALE TERMINAL
M = MALE TERMINAL

TERMINAL PATTERN



PRE-RELEASE
REFERENCE
USE ONLY

NOTES

1. MATERIAL :

- ① 35547-0400 : POLYESTER(PBT), NO GLASS FILLED, UL94V-0
COLOR : NATURAL
- ② 35547-0409 : PET/PC, NO GLASS FILLED, UL94V-0
② COLOR : NATURAL

2. PRODUCT SPECIFICATION : PS-35546-001

3. PACKING SPECIFICATION : PK-35547-001

4. MATED HOUSING : 35546-070*

5. APPLICABLE TERMINAL : 35725-5*10
35452-9*02
35453-9*02

[TABLE] ②

MATERIAL NO.	DIMENSION				MATERIAL
	A	B	C	D	
355470400	25.10	20.10	32.60	35.10	POLYESTER
355470409	25.40	20.50	32.90	35.40	PET/PC

RELEASED EC NO: KOR2013-0051 2012/12/20 DRAWN: JSSHIN 2012/12/20 CHKD: SICHU 2012/12/20 APPR: YSK(INOZ)	DESCRIPTION REV B2	QUALITY SYMBOLS ▽=0 ▽=0	GENERAL TOLERANCES (UNLESS SPECIFIED)		DIMENSION STYLE MM ONLY		SCALE 2:1	DESIGN UNITS METRIC	THIRD ANGLE PROJECTION
			mm	INCH	DRAWN BY WY. YANG	DATE 1997/11/12	TITLE .250 MULTI W-T-W CONN. PLUG HOUSING -4P		
4 PLACES ± --- ± ---			ANGULAR ± 3 °		MATERIAL NO.		DOCUMENT NO.	SHEET NO.	
3 PLACES ± --- ± ---			DRAFT WHERE APPLICABLE MUST REMAIN WITHIN DIMENSIONS		SEE TABLE		SD-35547-002	1 OF 1	
2 PLACES ± 0.30 ± ---			THIS DRAWING CONTAINS INFORMATION THAT IS PROPRIETARY TO MOLEX INCORPORATED AND SHOULD NOT BE USED WITHOUT WRITTEN PERMISSION						
1 PLACE ± 0.30 ± ---									
0 PLACE ± ±									

9 8 7 6 5 4 3 2 1