



**Distributor of Molex Connector Corporation: Excellent Integrated System Limited**  
Datasheet of 0357181710 - Connector Quick Connect Receptacle 16-20 AWG 0.187"  
(4.75mm) Crimp

Contact us: [sales@integrated-circuit.com](mailto:sales@integrated-circuit.com) Website: [www.integrated-circuit.com](http://www.integrated-circuit.com)

---

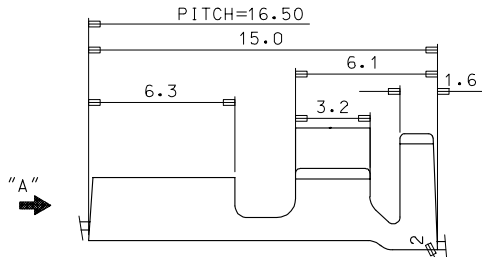
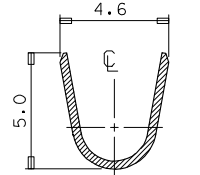
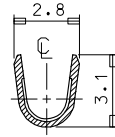
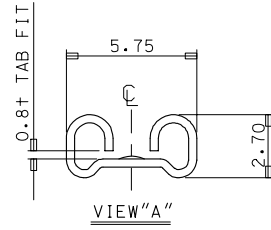
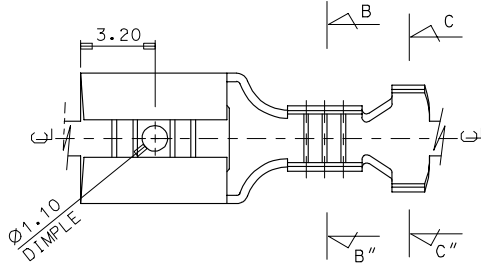
## **Excellent Integrated System Limited**

Stocking Distributor

Click to view price, real time Inventory, Delivery & Lifecycle Information:

[Molex Connector Corporation](#)  
[0357181710](#)

For any questions, you can email us directly:  
[sales@integrated-circuit.com](mailto:sales@integrated-circuit.com)



TRADE MARK  
(MK2)

NOTES

1. MATERIAL: BRASS, 0.35THICKNESS
2. FINISH: 35718-1000:UNPLATED  
35718-1010:POST-TIN PLATED

DO NOT SCALE DRAWING DIMENSION IN METRIC

PROJECT NO. SIMILAR ITEM DWG. NO. SD-35718-10\*0

REVISED ECN NO. KOR2005-0198 DRWN: JEJUN 05/04/29 CHK: W.Y.YANG APPR: C.W.LEE	QUALITY SYMBOLS MAJOR CRITICAL	GENERAL TOLERANCES: (UNLESS SPECIFIED)		SCALE 6:1	DESIGN UNITS <input checked="" type="checkbox"/> mm <input type="checkbox"/> INCH	THIRD ANGLE PROJECTION <input type="checkbox"/> FIRST ANGLE <input checked="" type="checkbox"/> THIRD ANGLE	DIMENSIONS: <input type="checkbox"/> mm <input type="checkbox"/> INCH <input checked="" type="checkbox"/> mm ONLY	SHT	REV									
		4 PLACES ±0. ±-	3 PLACES ±0. ±-	2 PLACES ±0.30 ±-	1 PLACE ±0.20 ±-	ANGULAR: ± °	DRAWN BY & DATE W.Y.YANG 93/05/24		CHECKED BY & DATE B.K.CHOI 93/05/24		APPROVED BY & DATE C.W.LEE 93/05/24		TITLE: .187 SLIP-ON REC' TERMINAL		MATERIAL NO. SEE NOTES		DRAWING NO. SD-35718-10*0	
B1	REV	DESCRIPTION		DRAFT WHERE APPLICABLE MUST REMAIN WITHIN DIMENSIONS		CAD FILENAME S7181000AAMI		MATERIAL NO. SEE NOTES		DRAWING NO. SD-35718-10*0		KOREA		SIZE B		MX-A3		