

Excellent Integrated System Limited

Stocking Distributor

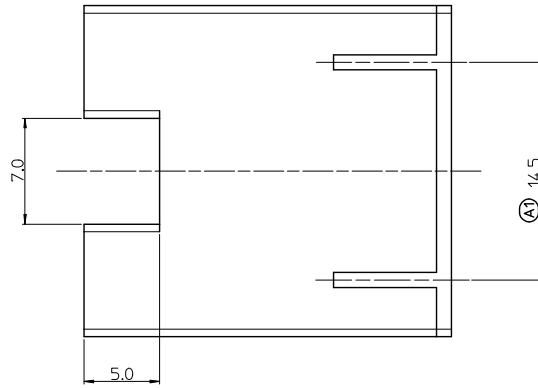
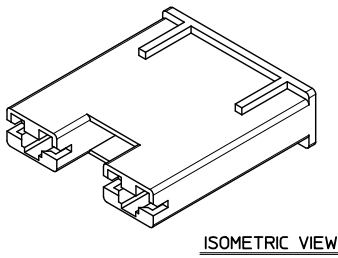
Click to view price, real time Inventory, Delivery & Lifecycle Information:

[Molex Connector Corporation](#)
[0358180290](#)

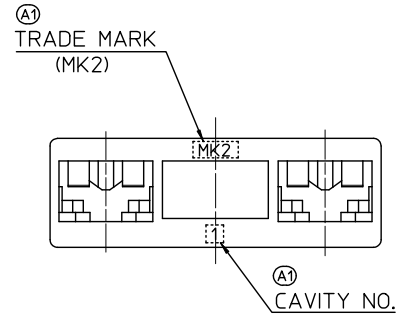
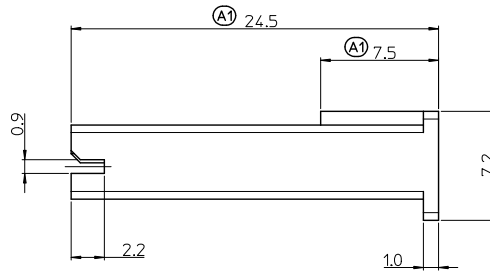
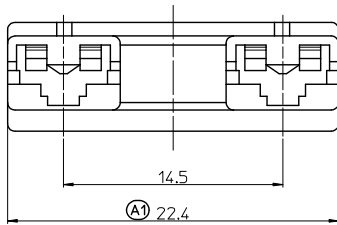
For any questions, you can email us directly:

sales@integrated-circuit.com

10 9 8 7 6 5 4 3 2 1



- NOTES**
- ① 1. MATERIAL : PET/PC, NO GLASS FILLED, UL94V-0
NATURAL COLOR : 35817-0270
BLUE COLOR : 35817-0274
 - 2. PRODUCT SPECIFICAION : PS-35817-001
 - 3. PACKING SPECIFICAION : PK-35817-001
 - 4. APPLICABLE TERMINAL : 35068-9702/9802/9902



RELEASED EC NO: KOR2014-0054 DRAWN: JSSHIN 2013/10/31 CHKD: SICHU APPR: YSKIM02 2013/11/29	QUALITY SYMBOLS ▽=0 ▽=0	GENERAL TOLERANCES (UNLESS SPECIFIED)		DIMENSION STYLE MM ONLY		SCALE 4:1	DESIGN UNITS METRIC	THIRD ANGLE PROJECTION	
		4 PLACES ± --- ± --- 3 PLACES ± --- ± --- 2 PLACES ± 0.30 ± --- 1 PLACE ± 0.30 ± --- 0 PLACE ± --- ± ---	ANGULAR ± 1 ° DRAFT WHERE APPLICABLE MUST REMAIN WITHIN DIMENSIONS	DRAWN BY JB. JIN DATE 2003/03/31	CHECKED BY MY. YANG DATE 2003/03/31	APPROVED BY YSKIM02 DATE 2013/11/29	MATERIAL NO. SEE NOTES SIZE A3	TITLE .187 MP-Lock HOUSING -2P (14.5MM PITCH) (FOR CAPACITOR)	DOCUMENT NO. SD-35817-002

9 8 7 6 5 4 3 2 1