

Excellent Integrated System Limited

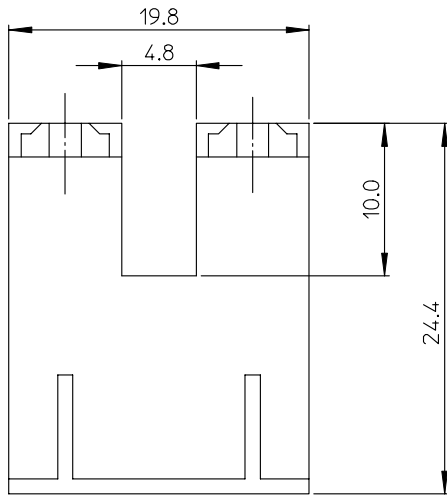
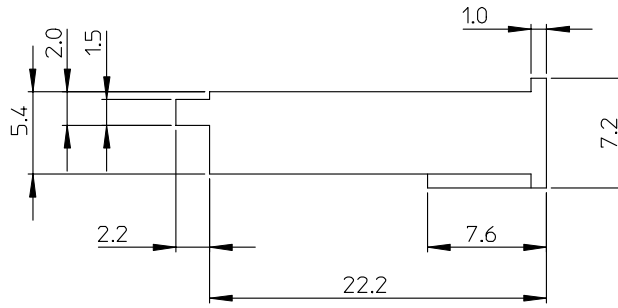
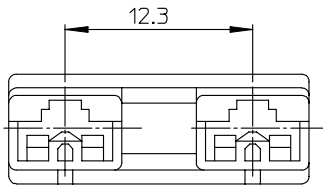
Stocking Distributor

Click to view price, real time Inventory, Delivery & Lifecycle Information:

[Molex Connector Corporation](#)
[0358250211](#)

For any questions, you can email us directly:

sales@integrated-circuit.com



NOTES

1. MATERIAL

ENG NO.	MATERIAL	COLOR
35817-0280	NYLON	NATURAL (WHITE)
35817-0290	POLYESTER(PBT)	
35817-9290	PBT/PC	

2. APPLICABLE TERMINAL : 35068-9702/9802/9902

DWG. NO. SD-35817-001
 SIMILAR ITEM
 PROJECT NO.
 DO NOT SCALE DRAWING DIMENSION IN METRIC

REVISED ECN NO. KOR 2007-0006 DRWN: JBJIN 06/06/09 CHK: W.Y.YANG APPR: S.HCHOI	QUALITY SYMBOLS MAJOR ∇ 0 CRITICAL ∇ 0	GENERAL TOLERANCES: (UNLESS SPECIFIED)		SCALE 4:1	DESIGN UNITS <input checked="" type="checkbox"/> mm <input type="checkbox"/> INCH	THIRD ANGLE PROJECTION	DIMENSIONS: <input type="checkbox"/> mm <input type="checkbox"/> INCH <input checked="" type="checkbox"/> mm ONLY	SHT REV		
		4 PLACES $\pm 0.$ \pm	3 PLACES $\pm 0.$ \pm	2 PLACES ± 0.30 \pm	1 PLACE ± 0.30 \pm	DRAWN BY & DATE W.Y.YANG 98/07/29	CHECKED BY & DATE B.K.CHOI 98/07/29	APPROVED BY & DATE C.W.LEE 98/07/29	CAD FILENAME S35817A.AMI	MATERIAL NO. SEE TABLE
DRAFT WHERE APPLICABLE MUST REMAIN WITHIN DIMENSIONS		THIS DRAWING CONTAINS INFORMATION THAT IS PROPRIETARY TO MOLEX INCORPORATED AND SHOULD NOT BE USED WITHOUT WRITTEN PERMISSION.								
								KOREA	SIZE B	

8 7 6 5 4 3 2 1