

## Excellent Integrated System Limited

Stocking Distributor

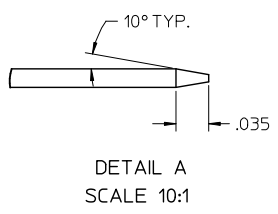
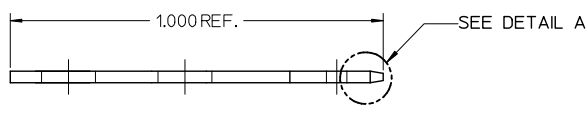
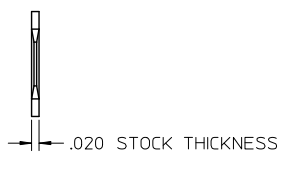
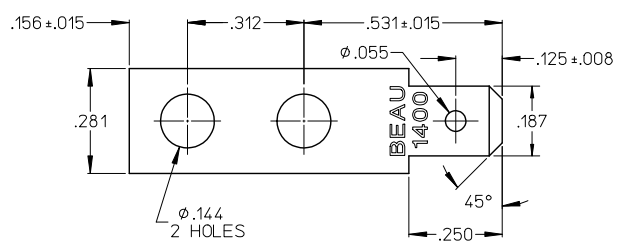
Click to view price, real time Inventory, Delivery & Lifecycle Information:

[Molex Connector Corporation](#)  
[0380020214](#)

For any questions, you can email us directly:

[sales@integrated-circuit.com](mailto:sales@integrated-circuit.com)

10	9	8	7	6	5	4	3	2	38002	
MATERIAL NO.	ENGINEERING NO.	DESCRIPTION	MATERIAL	FINISH						
380020176	1413	TERMINAL, FAST-TAB, FLAT	BRASS	TIN OVER COPPER PLATED						



NOTES:  
1. PART IS ROHS COMPLIANT.

INITIAL RELEASE EC NO: WNA2009-0537 DRAWN: ENCLMS 2009/04/22 CHECKED: CORK 2009/05/11 APPR: JACNEL 2009/05/12 REV: A	QUALITY SYMBOLS	GENERAL TOLERANCES (UNLESS SPECIFIED) 4 PLACES ± --- ± --- 3 PLACES ± --- ± .005 2 PLACES ± --- ± .01 1 PLACE ± --- ± --- ANGULAR ± 2° DRAFT WHERE APPLICABLE MUST REMAIN WITHIN DIMENSIONS	DIMENSION STYLE	SCALE	DESIGN UNITS	THIRD ANGLE PROJECTION	
	▽=0 ▽=0		INCH ONLY	4:1	INCH	DRAWN BY DATE H. C. H. 1972/10/24 CHECKED BY DATE R. NEFF 1972/10/24 APPROVED BY DATE R. NEFF 1972/10/24	TITLE TERMINAL, .187 FT, FL (CAT# 1413)
	SEE CHART		MATERIAL NO. SEE CHART	MOLEX INCORPORATED DOCUMENT NO. SD-38002-067	SHEET NO. 1 OF 1		
	THIS DRAWING CONTAINS INFORMATION THAT IS PROPRIETARY TO MOLEX INCORPORATED AND SHOULD NOT BE USED WITHOUT WRITTEN PERMISSION						