

Excellent Integrated System Limited

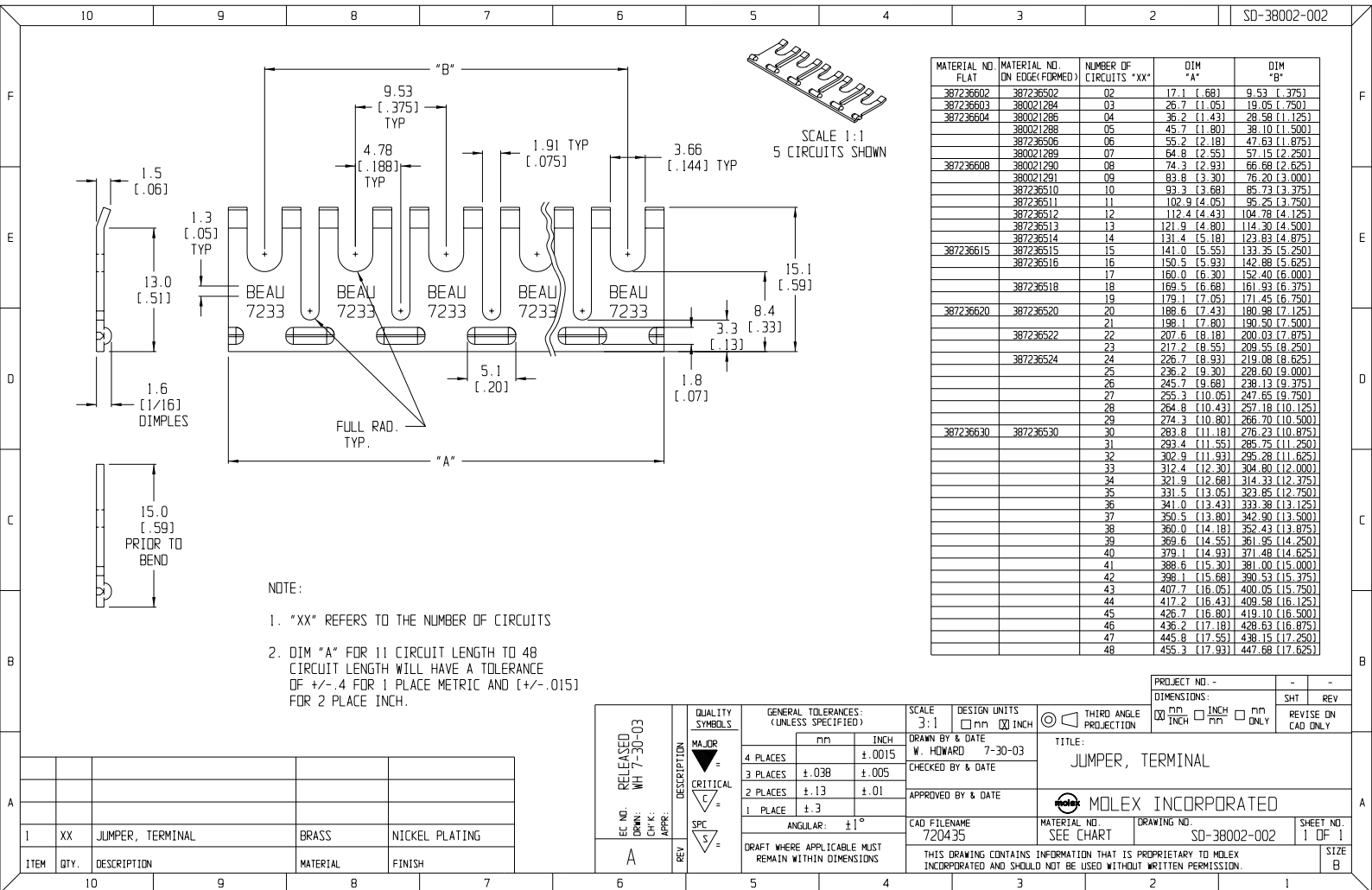
Stocking Distributor

Click to view price, real time Inventory, Delivery & Lifecycle Information:

[Molex Connector Corporation](#)
[0380021335](#)

For any questions, you can email us directly:

sales@integrated-circuit.com



ITEM	QTY.	DESCRIPTION	MATERIAL	FINISH
1	XX	JUMPER, TERMINAL	BRASS	NICKEL PLATING

EC NO. RELEASED WH 7-30-03	DESCRIPTION MAJOR	QUALITY SYMBOLS
CHK: []	CRITICAL	GENERAL TOLERANCES: (UNLESS SPECIFIED)
APPR: []	SPC	4 PLACES ±.038 ±.005
REV A		3 PLACES ±.13 ±.01
		2 PLACES ±.13 ±.01
		1 PLACE ±.3
		ANGULAR: ±1°
		DRAFT WHERE APPLICABLE MUST REMAIN WITHIN DIMENSIONS

SCALE 3:1	DESIGN UNITS <input type="checkbox"/> mm <input checked="" type="checkbox"/> INCH	THIRD ANGLE PROJECTION
DRAWN BY & DATE W. HOWARD 7-30-03	CHECKED BY & DATE	TITLE: JUMPER, TERMINAL
APPROVED BY & DATE	CAD FILENAME 720435	MATERIAL NO. SEE CHART
		DRAWING NO. SD-38002-002
		SHEET NO. 1 OF 1

PROJECT NO. -	-	-
DIMENSIONS:	SHT	REV
<input checked="" type="checkbox"/> mm <input type="checkbox"/> INCH	<input type="checkbox"/> INCH ONLY	REVISE ON CAD ONLY
THIS DRAWING CONTAINS INFORMATION THAT IS PROPRIETARY TO MOLEX INCORPORATED AND SHOULD NOT BE USED WITHOUT WRITTEN PERMISSION.		