

## Excellent Integrated System Limited

Stocking Distributor

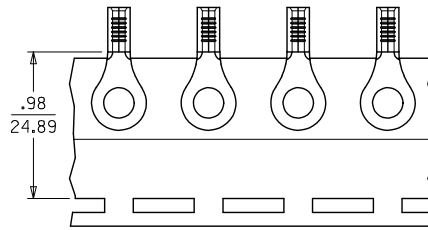
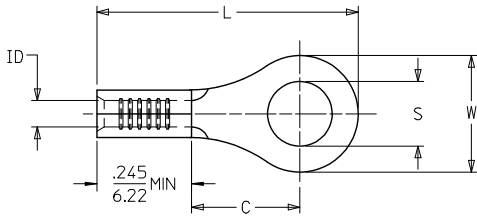
Click to view price, real time Inventory, Delivery & Lifecycle Information:

[Molex Connector Corporation](#)  
[0190440083](#)

For any questions, you can email us directly:

[sales@integrated-circuit.com](mailto:sales@integrated-circuit.com)

10		9		8		7		6		5		4		3		2		19044	
LOOSE PIECE				TAPE MOUNTED				SPECIFICATIONS											
MATERIAL NUMBER	ALTERNATE NUMBER	MATERIAL NUMBER	ALTERNATE NUMBER	STUD SIZE	"S" ±.005/(0.13)	"W" ±.010/(0.25)	"C" MIN.	"L" MAX.	"ID" MIN.	STOCK THICKNESS									
F 190440063	A-120-02	190440001	A-120-02T	2	.094/(2.39)	.225/(5.72)	.157/(3.99)	.563/(14.30)	.062/(1.57)	.028/(.71)									
190440064	A-120-04	190440065	A-120-04T	4	.119/(3.02)	.225/(5.72)	.157/(3.99)	.563/(14.30)	.062/(1.57)	.028/(.71)									
190440066	A-120-06	190440067	A-120-06T	6	.146/(3.71)	.225/(5.72)	.157/(3.99)	.563/(14.30)	.062/(1.57)	.028/(.71)									
190440068	A-121-06	190440003	A-121-06T	6	.146/(3.71)	.312/(7.92)	.270/(6.86)	.720/(18.29)	.062/(1.57)	.028/(.71)									
190440069	A-121-08	190440071	A-121-08T	8	.173/(4.39)	.312/(7.92)	.270/(6.86)	.720/(18.29)	.062/(1.57)	.028/(.71)									
190440072	A-121-10	190440073	A-121-10T	10	.198/(5.03)	.312/(7.92)	.270/(6.86)	.720/(18.29)	.062/(1.57)	.028/(.71)									
190440074	A-122-10	190440004	A-122-10T	10	.198/(5.03)	.467/(11.86)	.386/(9.80)	.914/(23.22)	.062/(1.57)	.028/(.71)									
E 190440075	A-122-14	190440076	A-122-14T	1/4	.265/(6.73) (C2)	.467/(11.86)	.386/(9.80)	.914/(23.22)	.062/(1.57)	.028/(.71)									
190440077	A-122-56	190440005	A-122-56T	5/16	.328/(8.33)	.467/(11.86)	.386/(9.80)	.914/(23.22)	.062/(1.57)	.028/(.71)									
190440078	A-126-10	190440006	A-126-10T	10	.198/(5.03)	.534/(13.56)	.552/(14.02)	1.113/(28.27)	.054/(1.37)	.031/(.79)									
190440079	A-126-14	190440080	A-126-14T	1/4	.265/(6.73) (C2)	.534/(13.56)	.552/(14.02)	1.113/(28.27)	.054/(1.37)	.031/(.79)									
190440082	A-126-56	190440008	A-126-56T	5/16	.328/(8.33)	.534/(13.56)	.552/(14.02)	1.113/(28.27)	.054/(1.37)	.031/(.79)									
190440081	A-126-38	190440007	A-126-38T	3/8	.390/(9.91)	.534/(13.56)	.552/(14.02)	1.113/(28.27)	.054/(1.37)	.031/(.79)									
190440083	A-132-04	190440009	A-132-04T	4	.126/(3.20)	.256/(6.45)	.240/(6.10)	.661/(16.69)	.062/(1.57)	.028/(.71)									
D 190440084	A-132-06	190440085	A-132-06T	6	.146/(3.71)	.256/(6.45)	.240/(6.10)	.661/(16.69)	.062/(1.57)	.028/(.71)									
190440086	A-132-08	190440087	A-132-08T	8	.146/(3.71)	.256/(6.45)	.240/(6.10)	.661/(16.69)	.062/(1.57)	.028/(.71)									



PARTS ON TAPE

CUSTOMER DRAWING

- NOTES:  
 1. MATERIAL: COPPER.  
 2. PLATING: ELECTRO-TIN.  
 3. ALL DIMENSIONS IN INCHES/(MM).  
 4. PARTS ARE ROHS COMPLIANT.

CORRECTED 1/4 STUD E.C. NO: 1902015-1639 DRAWN BY: JASO1 CHKD: MACNEIL APPR: MACNEIL 2015/05/01 2015/05/01 2015/05/12	QUALITY SYMBOLS ▽=0 ◻=0 DESCRIPTION	GENERAL TOLERANCES (UNLESS SPECIFIED)		DIMENSION STYLE		SCALE	DESIGN UNITS	THIRD ANGLE PROJECTION	
				IN/MM		---	INCH		
		4 PLACES ±---	±---	DRAWN BY	DATE	TITLE			
		3 PLACES ±---	±.005	HEB	1999/10/27	RING TONGUE TERMINAL 22-18 AWG KRIMP TITE, 100 SERIES			
2 PLACES ±0.13	±.01	CHECKED BY	DATE	MATERIAL NO.		DOCUMENT NO.		SHEET NO.	
1 PLACE ±0.25	±---	RWD	1999/10/27	SEE CHART		SD-19044-001		1 OF 1	
ANGULAR ±---		APPROVED BY		MATERIAL NO.		DOCUMENT NO.		SHEET NO.	
DRAFT WHERE APPLICABLE MUST REMAIN WITHIN DIMENSIONS				SEE CHART		SD-19044-001		1 OF 1	
				SIZE B		THIS DRAWING CONTAINS INFORMATION THAT IS PROPRIETARY TO MOLEX INCORPORATED AND SHOULD NOT BE USED WITHOUT WRITTEN PERMISSION			