



Distributor of Molex Connector Corporation: Excellent Integrated System Limited
Datasheet of 0190080020 - Connector Quick Connect Receptacle 14-16 AWG 0.187"
(4.75mm) Crimp

Contact us: sales@integrated-circuit.com Website: www.integrated-circuit.com

Excellent Integrated System Limited

Stocking Distributor

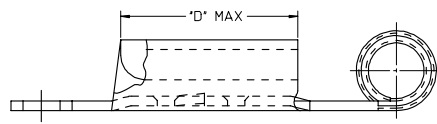
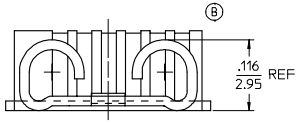
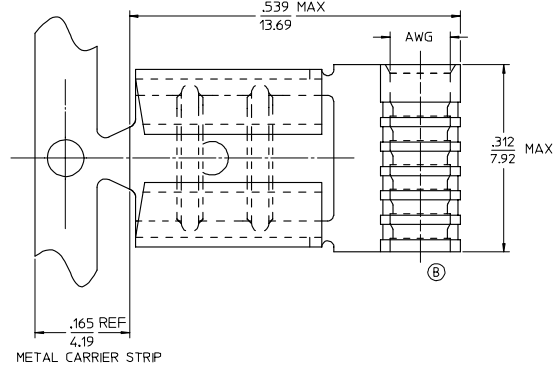
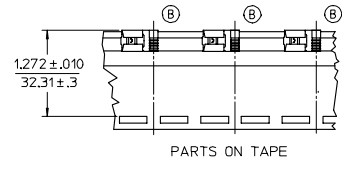
Click to view price, real time Inventory, Delivery & Lifecycle Information:

[Molex Connector Corporation](#)
[0190080020](#)

For any questions, you can email us directly:
sales@integrated-circuit.com

Engineering Files @ Integrated-circuit.com Website: www.integrated-circuit.com

MATERIAL NUMBER ON STRIP	ENGINEERING NUMBER ON STRIP	MATERIAL NUMBER LOOSE PIECE	ENGINEERING NUMBER LOOSE PIECE	MATERIAL NUMBER	ENGINEERING NUMBER	AWG	TAB SIZE	MAX
190080008	AAZ-1147	190080001	AA-1147	190080004	AA-1147T	22-18	.187 X .020	.257/6.53
190080009	AAZ-1147-032	190080002	AA-1147-032	190080003	AA-1147-032T	22-18	.187 X .032	.257/6.53
190080013	AAZ-1158	190080006	AA-1158	190080007	AA-1158T	22-18	.250 X .032	.312/7.92
190080028	BBZ-1148	190080019	BB-1148	190080022	BB-1148T	16-14	.187 X .020	.257/6.53
190080029	BBZ-1148-032	190080020	BB-1148-032	190080021	BB-1148-032T	16-14	.187 X .032	.257/6.53
190080031	BBZ-1159	190080024	BB-1159	190080027	BB-1159T	16-14	.250 X .032	.312/7.92



SALES DRAWING

- NOTES:
- MATERIAL: BRASS .016/0.04 THICK. PLATING ELECTRO-TIN.
 - TAB SIZE SEE CHART.
 - WIRE AWG SEE CHART.
 - (B) PART IS ROHS COMPLIANT.

REVISED BARREL & CHART E.C. NO: ET/2007-0001 DRAWN BY: 2006/07/13 CHK'D: JIMONE LL 2006/07/17 APPROVED BY: 2006/07/17 DESCRIPTION:	QUALITY SYMBOLS	GENERAL TOLERANCES (UNLESS SPECIFIED)	DIMENSION STYLE	SCALE	DESIGN UNITS	THIRD ANGLE PROJECTION															
	$\nabla=0$ $\nabla=0$	<table border="1"> <tr> <th></th> <th>mm</th> <th>INCH</th> </tr> <tr> <td>4 PLACES</td> <td>± .005</td> <td>± .0005</td> </tr> <tr> <td>3 PLACES</td> <td>± .01</td> <td>± .001</td> </tr> <tr> <td>2 PLACES</td> <td>± .13</td> <td>± .01</td> </tr> <tr> <td>1 PLACE</td> <td>± .25</td> <td>± .01</td> </tr> </table>		mm	INCH	4 PLACES	± .005	± .0005	3 PLACES	± .01	± .001	2 PLACES	± .13	± .01	1 PLACE	± .25	± .01	IN/MM NONE	NONE INCH	INCH	THIRD ANGLE PROJECTION
		mm	INCH																		
	4 PLACES	± .005	± .0005																		
3 PLACES	± .01	± .001																			
2 PLACES	± .13	± .01																			
1 PLACE	± .25	± .01																			
ANGULAR ±1/2°	DRAWN BY: BENDERLE CHECKED BY: R DEROSS APPROVED BY: R DEROSS DATE: 2005/01/25 DATE: 2005/01/25 DATE: 2005/01/25	MATERIAL NO. SEE CHART DOCUMENT NO. SD-19008-013	TITLE: FLAG QD 22-18 AWG & 16-14 AWG .187X.020&.032,.250X.032	MOLEX INCORPORATED	SHEET NO. 1 OF 1																
DRAFT WHERE APPLICABLE MUST REMAIN WITHIN DIMENSIONS	SIZE C	THIS DRAWING CONTAINS INFORMATION THAT IS PROPRIETARY TO MOLEX INCORPORATED AND SHOULD NOT BE USED WITHOUT WRITTEN PERMISSION																			