

Excellent Integrated System Limited

Stocking Distributor

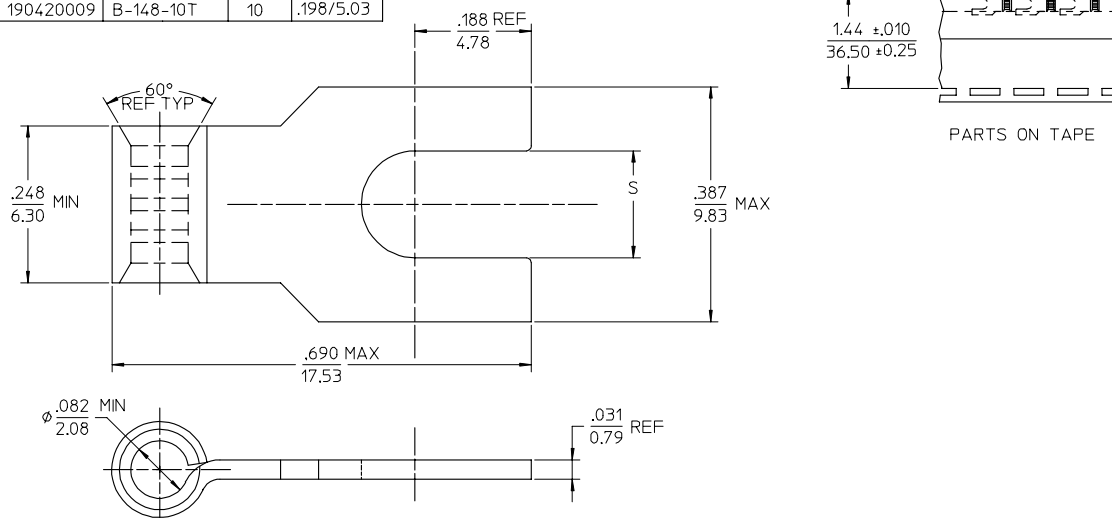
Click to view price, real time Inventory, Delivery & Lifecycle Information:

[Molex Connector Corporation](#)
[0190420008](#)

For any questions, you can email us directly:

sales@integrated-circuit.com

10	9	8	7	6	5	4	3	2	19042
MATERIAL NUMBER	ENGINEERING NUMBER	TAPE MATERIAL NUMBER	TAPE ENGINEERING NUMBER	STUD SIZE	S				
190420004	B-148-06	190420005	B-148-06T	06	.146/3.71				
190420006	B-148-08	190420007	B-148-08T	08	.173/4.39				
190420008	B-148-10	190420009	B-148-10T	10	.198/5.03				



SALES DRAWING

NOTES:
1. MATERIAL: COPPER PLATING ELECTRO TIN.

NEW RELEASE EC NO: ETC/2005-0122 DRAWN BY: BENDERLE 2005/02/15 CHECKED BY: CHIKCHA DEROSS 2005/02/15 APPROVED BY: RDEROSS 2005/02/15 REV: A	QUALITY SYMBOLS ▽=0 ▽=0	GENERAL TOLERANCES (UNLESS SPECIFIED)		DIMENSION STYLE IN/MM	SCALE 4:1	DESIGN UNITS INCH	THIRD ANGLE PROJECTION		
		4 PLACES ± --- ± ---	3 PLACES ± --- ± ---	2 PLACES ± --- ± ---	1 PLACE ± --- ± ---	ANGULAR ± --- °	DRAWN BY: BENDERLE DATE: 2005/02/01	CHECKED BY: RDEROSS DATE: 2005/02/01	APPROVED BY: RDEROSS DATE: 2005/02/01
		DRAFT WHERE APPLICABLE MUST REMAIN WITHIN DIMENSIONS		SEE CHART	MATERIAL NO. B	DOCUMENT NO. SD-19042-001	TITLE: FLAG SPADE TONGUE TERMINAL KRIMP TITE 16-14 AWG MOLEX INCORPORATED		
		THIS DRAWING CONTAINS INFORMATION THAT IS PROPRIETARY TO MOLEX INCORPORATED AND SHOULD NOT BE USED WITHOUT WRITTEN PERMISSION						SHEET NO. 1 OF 1	