

## Excellent Integrated System Limited

Stocking Distributor

Click to view price, real time Inventory, Delivery & Lifecycle Information:

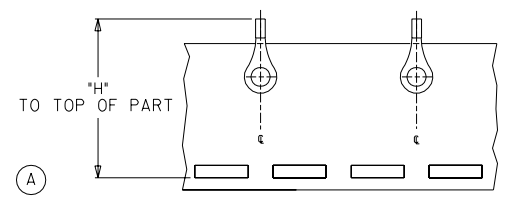
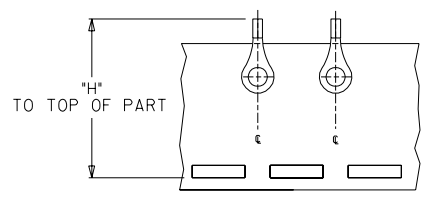
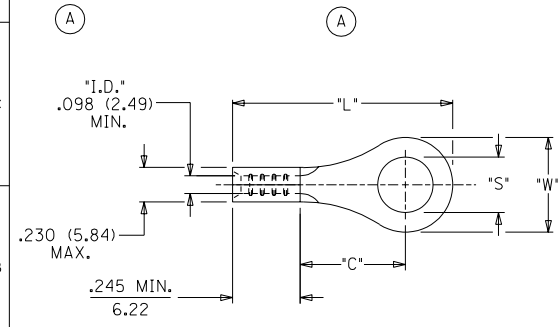
[Molex Connector Corporation](#)  
[0190440162](#)

For any questions, you can email us directly:

[sales@integrated-circuit.com](mailto:sales@integrated-circuit.com)



MATERIAL NO. LOOSE PIECE	ENG. NO.	MATERIAL NO. TAPE MOUNTED	ENG. NO.	STUD SIZE	±.003 "S"	"W" MAX. (A)	"C" MIN.	"L" MAX. (A)	"H" MAX. (A)
190440137	B-101-12HD	190440138	B-101-12HDT	12	.515 (13.10)				.020/0.51
190440139	B-101-14HD	-----	-----	14	.265 (6.73)				
190440140	B-101-38HD	-----	-----	38	.390 (9.91)	.760 (19.30)	.611 (15.52)	1.280 (32.51)	1.556 (39.52)
190440141	B-101-56HD	-----	-----	56	.328 (8.33)				
190440142	B-101-76HD	190440229	B-101-76HDT	76	.453 (11.51)				
190440161	B-128-06HD	-----	-----	6	.146 (3.71)				
190440162	B-128-08HD	-----	-----	8	.173 (4.39)	.385 (9.78)	.303 (7.70)	.785 (19.94)	
190440163	B-128-10HD	190440164	B-128-10HDT	10	.198 (5.03)				
190440166	B-130-10HD	190440022	B-130-10HDT	10	.198 (5.03)				
190440167	B-130-14HD	190440023	B-130-14HDT	14	.265 (6.73)	.540 (13.72)	.393 (9.98)	.952 (24.18)	1.234 (31.34)
190440168	B-130-56HD	190440024	B-130-56HDT	56	.328 (8.33)				
190440172	B-136-04HD	-----	-----	4	.119 (3.02)		(A)		
190440173	B-136-06HD	190440026	B-136-06HDT	6	.146 (3.71)	.292 (7.42)	.303 (7.70)	.741 (18.82)	
190440174	B-136-08HD	190440027	B-136-08HDT	8	.173 (4.39)				
190440180	B-140-10HD	-----	-----	10	.198 (5.03)				
190440182	B-140-14HD	190440183	B-140-14HDT	14	.265 (6.73)				
190440184	B-140-38HD	190440185	B-140-38HDT	38	.390 (9.91)	.598 (15.19)	.466 (11.84)	1.056 (26.82)	1.426 (36.22)
190440186	B-140-56HD	190440187	B-140-56HDT	56	.328 (8.33)				



DOUBLE SPACE ON  
B-101-\*\*\*HDT AND B-140-\*\*\*HDT  
ONLY

SALES DRAWING

NOTE(S):  
1. MATERIAL: COPPER (.050/1.27 THICK)  
2. PLATING: ELECTROPLATE TIN.  
3. ALL DIMENSIONS IN INCHES/(MM).  
WIRE SIZE: 16-14 AWG  
1.0 - 2.5 MM<sup>2</sup>

UPDATE TO MX STDS. EC NO. ETC2003-0203 DRWN: DLM 04/05/05 CHK: HB 04/05/05 APPR: RMD 04/05/05	QUALITY SYMBOLS MAJOR = 0 CRITICAL = 0 C/0	GENERAL TOLERANCES: (UNLESS SPECIFIED)		SCALE NTS	DESIGN UNITS <input type="checkbox"/> mm <input checked="" type="checkbox"/> INCH	THIRD ANGLE PROJECTION	DIMENSIONS: <input type="checkbox"/> mm <input checked="" type="checkbox"/> INCH <input type="checkbox"/> mm ONLY	SHT REV
		4 PLACES ±0.---- ±.----	3 PLACES ±0.--- ±.005	2 PLACES ±0.13 ±.010	1 PLACE ±0.25 ±.---	ANGULAR: ±1/2°	DRAFT WHERE APPLICABLE MUST REMAIN WITHIN DIMENSIONS	THIS DRAWING CONTAINS INFORMATION THAT IS PROPRIETARY TO MOLEX INCORPORATED AND SHOULD NOT BE USED WITHOUT WRITTEN PERMISSION.
DESCRIPTION REV		DRAWN BY & DATE DLM 03/02/28		CHECKED BY & DATE SB 03/02/28		APPROVED BY & DATE RWD 03/02/28		TITLE: RING TONGUE TERMINAL HEAVY-DUTY KRIMP TITE 16-14 AWG
REV		MATERIAL NO. SD19044008.DGN (SEE CHART)		DRAWING NO. SD-19044-008		SHEET NO. 1 OF 1		SIZE B