

Excellent Integrated System Limited

Stocking Distributor

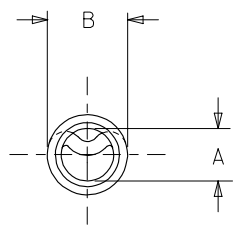
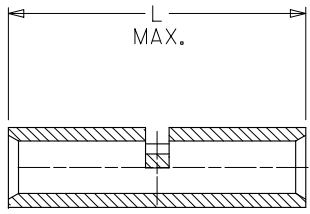
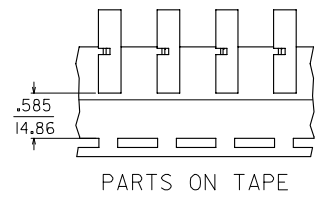
Click to view price, real time Inventory, Delivery & Lifecycle Information:

[Molex Connector Corporation](#)
[0192150022](#)

For any questions, you can email us directly:

sales@integrated-circuit.com

10	9	8	7	6	5	4	3	2	1
MATERIAL NUMBER	ENG. NUMBER	"L" MAX	"A" MIN.	"B" MAX	PACKAGING				
192150018	BS-331	.675 (17.10)	.091 (2.31)	.160 (4.06)	LOOSE PIECE				
192150022	BS-342-MX	.605 (15.37)	.088 (2.24)	.160 (4.06)	TAPE MOUNTED				
192150115	BS-331T	.675 (17.10)	.091 (2.31)	.160 (4.06)	LOOSE PIECE				
192150250	BS-331US	.675 (17.10)	.091 (2.31)	.160 (4.06)	TAPE MOUNTED				
192150255	BS-331UST	.675 (17.10)	.091 (2.31)	.160 (4.06)	TAPE MOUNTED				



SALES DRAWING

NOTES:
 1. MATERIAL: COPPER.
 2. PLATING: ELECTRO-TIN.
 3. ALL DIMENSIONS IN INCHES/(MM).

OBSO P/N 192150020 & -21 EC NO. ETC2006-0022 CHYKROGROSS 2005/08/15 APPROVED 2005/08/15 APPROVED 2005/08/15	QUALITY SYMBOLS ▽=0 ▽=0	GENERAL TOLERANCES (UNLESS SPECIFIED)		DIMENSION STYLE	SCALE	DESIGN UNITS	THIRD ANGLE PROJECTION	
		mm	INCH	IN/MM	INCH	INCH		
		4 PLACES	±---	±---	DRAWN BY	DATE	TITLE	
		3 PLACES	±---	±---	JLOMASTRO	05/01/07	BUTT CONNECTOR SEAMLESS	
2 PLACES	±---	±---	CHECKED BY	DATE	16-14 AWG WIRE SIZE			
1 PLACE	±---	±---	RDEROSS	05/01/07	MOLEX INCORPORATED			
		ANGULAR	±---	APPROVED BY	DATE			
				RDEROSS	05/01/07			
		DRAFT WHERE APPLICABLE MUST REMAIN WITHIN DIMENSIONS		MATERIAL NO.	DOCUMENT NO.	SHEET NO.		
				SEE CHART	SD-19215-002	1 OF 1		
				THIS DRAWING CONTAINS INFORMATION THAT IS PROPRIETARY TO MOLEX INCORPORATED AND SHOULD NOT BE USED WITHOUT WRITTEN PERMISSION				