

## Excellent Integrated System Limited

Stocking Distributor

Click to view price, real time Inventory, Delivery & Lifecycle Information:

[Molex Connector Corporation](#)  
[0191340008](#)

For any questions, you can email us directly:

[sales@integrated-circuit.com](mailto:sales@integrated-circuit.com)



FILE NO. **A-CD 303-02**

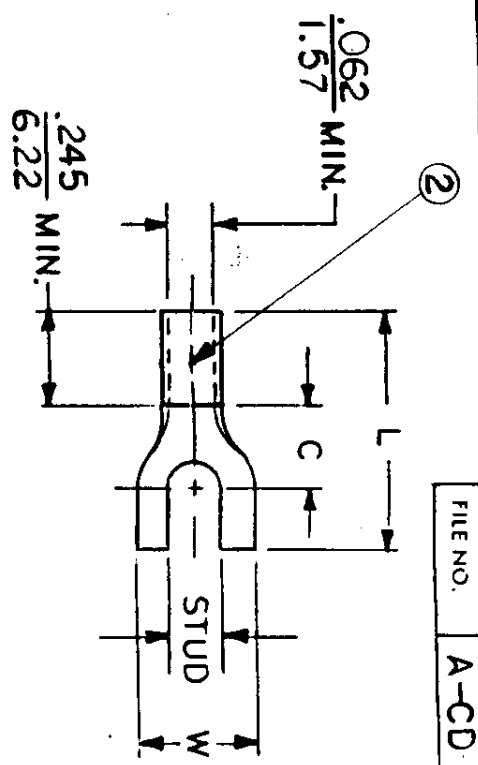
**NOTES:**  
 ① MAT'L: COPPER(STOCK TKN  $\frac{0.28}{.71}^{+.001}_{-.000}$ )  
 PLATING: ELECTRO-TIN(.0003MIN.)  
 ② BRAZED SEAM

**STUD SIZES: ( $\pm .005$ )**

- 02 = .094
- 04 = .119
- 06 = .146
- 08 = .173
- 10 = .198
- 14 = .265
- 56 = .328
- 38 = .390

"UL" LISTING #E32244  
 "CSA" LISTING #18689

ALL DIMENSIONS =  $\frac{\text{INCHES}}{\text{MM}}$



WIRE SIZE: 22-18 AWG  
 .25-1.5 MM<sup>2</sup>

PART NUMBER	"W" ±.010	"C" MIN.	"L" MAX.	AVAILABLE STUD SIZES	DIMENSIONAL TOLERANCES UNLESS OTHERWISE SPECIFIED		
					FRAC.	DEC.	ANG.
A-335-	$\frac{.316}{8.02}$	$\frac{.303}{7.70}$	$\frac{.778}{19.76}$	06, 08, 10			

TITLE: SPADE TONGUE TERMINAL  
 VERSAKRIMP 300-SERIES

SCALE: NTS  
 DATE: 11-28-84  
 CHECKD. BY: GA  
 APPRD. BY:   
 DWG. NO. A CUSTOMER DWG.

