

Excellent Integrated System Limited

Stocking Distributor

Click to view price, real time Inventory, Delivery & Lifecycle Information:

[Molex Connector Corporation](#)
[0191470089](#)

For any questions, you can email us directly:

sales@integrated-circuit.com



NOTES:

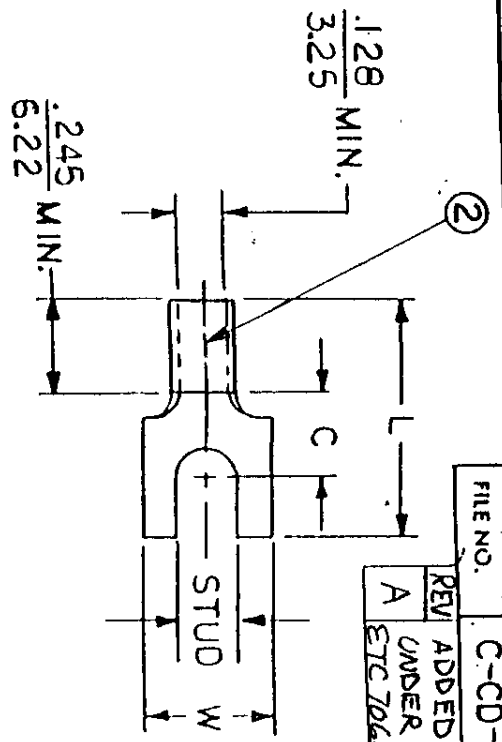
- ① MAT'L: COPPER (STOCK TKN. $\frac{.040}{.102}$ $\pm .001$)
 PLATING: ELECTRO-FIN (.0003 MIN.)
- ② BRAZED SEAM

STUD SIZES: ($\pm .005$)

- 02 = .094
- 04 = .119
- 06 = .146
- 08 = .173
- 10 = .198
- 14 = .265
- 56 = .328
- 38 = .390

"UL" LISTING # E32244
 "CSA" LISTING # 18689

ALL DIMENSIONS = $\frac{\text{INCHES}}{\text{M.M}}$



FILE NO. C-CD-303-01

REV	DESCRIPTION
A	ADDED 08, 10 TO CHART UNDER PART # 3105
	ETC 70688-1/31: EDB

WIRE SIZE: 12-10 AWG
 40-60 MM²

PART NUMBER	"W" ±.010	"C" MIN.	"L" MAX.	REFERENCE		SCALE	NTS	DATE	TITLE
				UNLESS OTHERWISE SPECIFIED	SCALE				
C-3102	$\frac{.415}{.415}$	$\frac{.305}{.725}$	$\frac{.784}{.19.91}$						AVAILABLE STUD SIZES
C-3105	$\frac{.320}{.8.13}$	$\frac{.505}{.7.75}$	$\frac{.784}{.19.91}$						06, 08, 10

DIMENSIONAL TOLERANCES		REFERENCE		SCALE		NTS		DATE		TITLE	
UNLESS OTHERWISE SPECIFIED										SPADE TONGUE TERMINAL	
FRAC.	DEC.	ANG.		DRWN. BY:	JJ	11-28-84		CHKD. BY:	GZ	11-30-84	VERSAKRIMP 300-SERIES
				APPRD. BY:							



DWG. NO. A CUSTOMER DWG.