

Excellent Integrated System Limited

Stocking Distributor

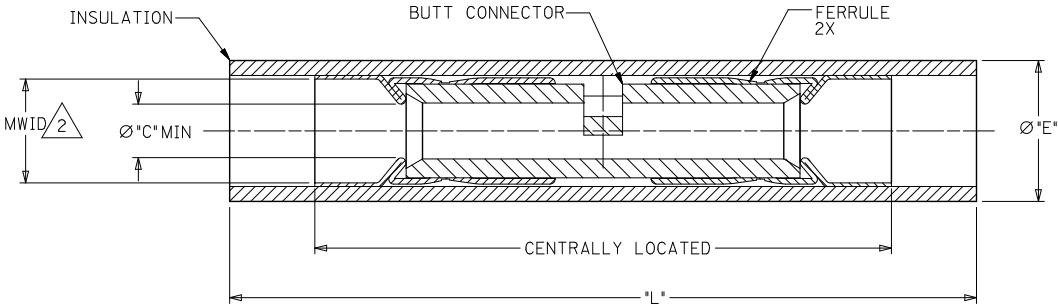
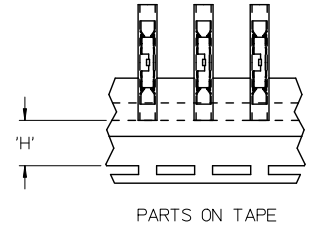
Click to view price, real time Inventory, Delivery & Lifecycle Information:

[Molex Connector Corporation](#)
[0192000023](#)

For any questions, you can email us directly:

sales@integrated-circuit.com

10	9	8	7	6	5	4	3	2	19200
MATERIAL NUMBER	ENGINEERING NUMBER	WIRE SIZE	INSULATION COLOR	MWID \triangle	"C"	"E" MAX	"L" MAX	PACKAGING	"H" NOMINAL
192000002	AS-845	22-18	DARK RED	\varnothing .138/3.50	\varnothing .056/1.42	\varnothing .20/5.1	1.26/32.0	LOOSE PC	-
192000022	AS-845T		RED					PART ON TAPE	.48/12.1
192000025 (E)	AS-845 PINK		PINK					LOOSE PC	-
192000026 (E)	AS-845T PINK	16-14	BLUE	\varnothing .169/4.29	\varnothing .086/2.18	\varnothing .23/5.8	1.26/32.0 (E)	PART ON TAPE	.48/12.1
192000001	BS-831	12-10	YELLOW	\varnothing .230/5.84	\varnothing .138/3.50	\varnothing .30/7.6	1.62/41.1 (E)	LOOSE PC	-
192000023	BS-831T							PART ON TAPE	.49/12.4
192000003	CS-846							LOOSE PC	-
192000024	CS-846T							PART ON TAPE	.48/12.3



NOTES:

- MATERIAL;
INSULATION: NYLON
FERRULE: TIN PLATED BRASS.
BUTT CONNECTOR: TIN PLATED COPPER.
- \triangle MWID = MAXIMUM WIRE INSULATION DIAMETER.
- ASSEMBLY IS ROHS COMPLIANT.

ADD PINK P/NS EC NO: WNA/2009-0808 DRW: WTHRODAHL 2009/08/18 CHKD: JMACNEIL 2002/03/22 APPR: JMACNEIL 2010/03/25	QUALITY SYMBOLS	GENERAL TOLERANCES (UNLESS SPECIFIED) <table border="1"> <tr> <th></th> <th>mm</th> <th>INCH</th> </tr> <tr> <td>4 PLACES</td> <td>\pm---</td> <td>\pm---</td> </tr> <tr> <td>3 PLACES</td> <td>\pm---</td> <td>\pm.005</td> </tr> <tr> <td>2 PLACES</td> <td>\pm0.13</td> <td>\pm.01</td> </tr> <tr> <td>1 PLACE</td> <td>\pm0.25</td> <td>\pm---</td> </tr> <tr> <td colspan="3">ANGULAR \pm1/2°</td> </tr> </table>		mm	INCH	4 PLACES	\pm ---	\pm ---	3 PLACES	\pm ---	\pm .005	2 PLACES	\pm 0.13	\pm .01	1 PLACE	\pm 0.25	\pm ---	ANGULAR \pm 1/2°			DIMENSION STYLE	SCALE	DESIGN UNITS	THIRD ANGLE PROJECTION
			mm	INCH																				
	4 PLACES		\pm ---	\pm ---																				
	3 PLACES		\pm ---	\pm .005																				
2 PLACES	\pm 0.13	\pm .01																						
1 PLACE	\pm 0.25	\pm ---																						
ANGULAR \pm 1/2°																								
DESCRIPTION	IN/MM	1:1	INCH	BUTT SPLICE, SEAMLESS, AVIKRIMP, SUPERDUTY																				
REV	DRAWN BY	DATE	MOLEX INCORPORATED																					
	CHECKED BY	DATE	SD-19200-001																					
	APPROVED BY	DATE	SHEET NO. 1 OF 1																					
	MATERIAL NO.		THIS DRAWING CONTAINS INFORMATION THAT IS PROPRIETARY TO MOLEX INCORPORATED AND SHOULD NOT BE USED WITHOUT WRITTEN PERMISSION																					