

Excellent Integrated System Limited

Stocking Distributor

Click to view price, real time Inventory, Delivery & Lifecycle Information:

[Molex Connector Corporation](#)

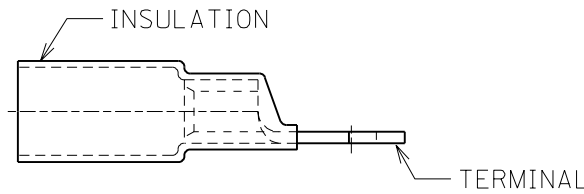
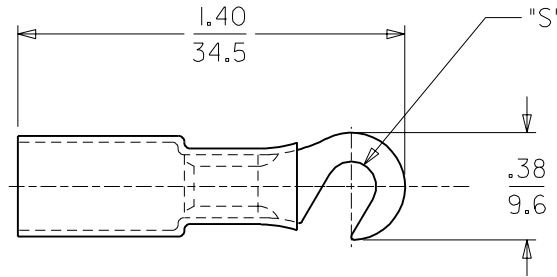
[0191640215](#)

For any questions, you can email us directly:

sales@integrated-circuit.com

MATERIAL NO	ALTERNATE NO	TERMINAL	"S" REF
191640213	SC-211-06	C-111-06	.146
191640214	SC-211-08	C-111-08	.173
191640215	SC-211-10	C-111-10	.198

DRWG. NO. SD-19164-003



CUSTOMER DRAWING

TERMINAL
MATERIAL: COPPER
PLATING: TIN

INSULATION
MATERIAL: HEAT SHRINKABLE
NYLON TUBING W/ HOT-MELT
ADHESIVE INNER LINER
COLOR: BLUE

DIMENSIONS SHOWN (METRIC) INCH		
UNLESS OTHERWISE SPECIFIED TOLERANCES: ANGULAR ± 1/2°		
	INCH	METRIC
3 PLACE	± .005	± ---
2 PLACE	± .01	± 0.13
1 PLACE	± ---	± 0.25

DRAFT WHERE APPLICABLE MUST REMAIN WITHIN DIMENSIONS

DRWG. BY	HEB	CHK'D. BY	RWD
APP'D. BY	RWD	SCALE	2: 1

REVISE ONLY ON CAD SYSTEM

TITLE
HOOK TONGUE TERMINAL
PERMA-SEAL 12-10 AWG
SC-211-SERIES

molex ETC INC. PINELLAS PARK, FLA. 33781 U.S.A.	SHEET NO.	DATE
	1 OF 1	99/04/21

PART NO.	DRWG. NO.
SEE CHART	SD-19164-003

FILE NAME	THIS DRAWING CONTAINS INFORMATION THAT IS PROPRIETARY TO MOLEX-ETC INC. AND SHOULD NOT BE USED WITHOUT WRITTEN PERMISSION.	DIV.	SIZE
19164003 SD		ET	A

6 5 4 3 2 1