

Excellent Integrated System Limited

Stocking Distributor

Click to view price, real time Inventory, Delivery & Lifecycle Information:

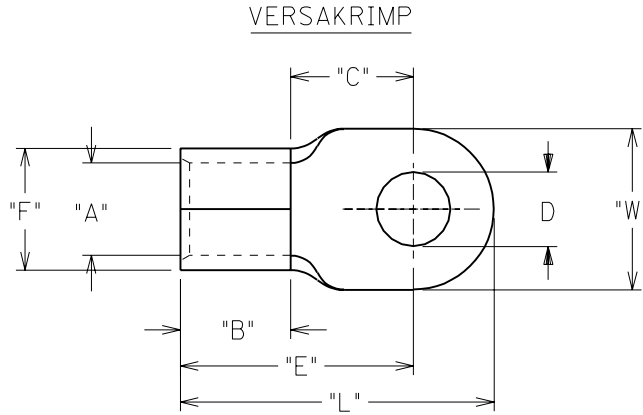
[Molex Connector Corporation](#)
[0191930383](#)

For any questions, you can email us directly:

sales@integrated-circuit.com

PART NUMBER	WIRE SIZE	"W"	"C" MIN	"E" MAX	"B" MIN	"L" MAX	"A" MIN	STOCK THICKNESS	"F" MAX	AVAILABLE STUD SIZE
L-395-	4/0	1.102 1.128	.822	1.653	.734	2.242	.622	.099 .102	.865	14, 38, 76, 12, 58
L-398-	4/0	1.227 1.253	1.292	2.123	.734	2.765	.622	.099 .102	.865	58, 34, 78

DRWG. NO.	SD02051
-----------	---------



MATERIAL: COPPER
PLATING: ELECTRO-TIN

STUD SIZE		±.005 "D"
14	1/4"	.265
56	5/16"	.328
38	3/8"	.390
76	7/16"	.453
12	1/2"	.515
58	5/8"	.656
34	3/4"	.781
78	7/8"	.906

CUSTOMER DRAWING

DIMENSIONS SHOWN (METRIC) INCH	
UNLESS OTHERWISE SPECIFIED TOLERANCES: ANGULAR ± 1/2°	
INCH METRIC	
3 PLACE	± .005 ± 0.13
2 PLACE	± .01 ± 0.25
1 PLACE	± --- ± ---
DRAFT WHERE APPLICABLE MUST REMAIN WITHIN DIMENSIONS	
DRWG. BY LEM	CHK'D. BY
APP'D. BY	SCALE NO:NE

REVISE ONLY ON CAD SYSTEM	
TITLE "L" RING TONGUE TERMINAL	
PINELLAS PARK, FLA. 33781 U.S.A.	SHEET NO. DATE 70/03/02
PART NO. SEE CHART	DRWG. NO. SD02051
FILE NAME SDL395 DGN	THIS DRAWING CONTAINS INFORMATION THAT IS PROPRIETARY TO MOLEX-ETC INC. AND SHOULD NOT BE USED WITHOUT WRITTEN PERMISSION.
DIV. A	SIZE A

A	ADD STUD SIZE & UPDATE TO CAD ET970953 08/20
LTR.	REVISIONS

6 5 4 3 2 1