

Excellent Integrated System Limited

Stocking Distributor

Click to view price, real time Inventory, Delivery & Lifecycle Information:

[Sumida Corporation](#)
[CDMC104NP-R36M](#)

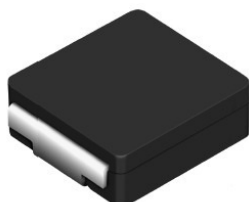
For any questions, you can email us directly:

sales@integrated-circuit.com

SMD Power Inductor CDMC104



Halogen Free



Description

- Metal compound molding type construction.
- Magnetically shielded.
- L × W × H: 11.5 × 10.2 × 4.0 mm Max.
- Product weight: 2.5 g (Ref.)
- Moisture Sensitivity Level: 1
- RoHS compliance.
- Halogen Free available.

Environmental Data

- Operating temperature range: -40°C ~ +125°C (including coil's self temperature rise)
- Storage temperature range: -40°C ~ +85°C
- Solder reflow temperature: 260 °C peak.

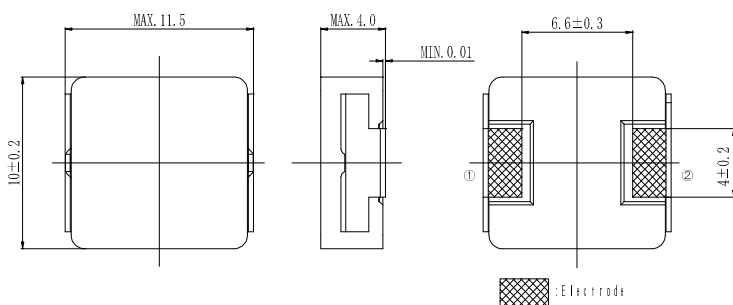
Packaging

- Carrier tape and reel packaging.
- 13.0" diameter reel
- 500pcs per reel

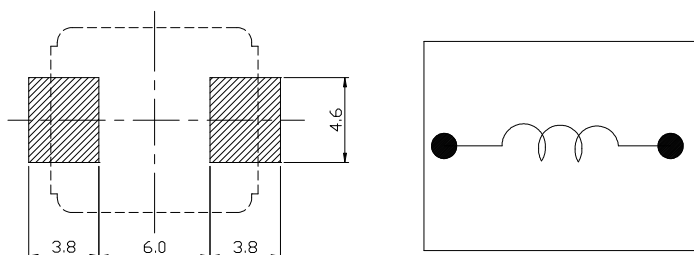
Applications

- Ideally used in low voltage-high current laptop PC & sever power supply.

Dimension - [mm]



Land pattern and Schematics - [mm]



Electrical Characteristics

Part No.	Stamp	Inductance [Within] (μ H) ※1	D.C.R. [Within] (at 20°C) (m Ω)	D.C. Saturation current (A)※2		Temperature rise current (A)※3
				(at 20°C)	(at 125°C)	
CDMC104NP-R36M	R36M	0.36 ± 20%	1.10 ± 10%	28.0	27.0	25.0
CDMC104NP-R56M	R56M	0.56 ± 20%	1.48 ± 10%	22.0	21.0	21.0

※1. Measuring condition: at 1MHz.

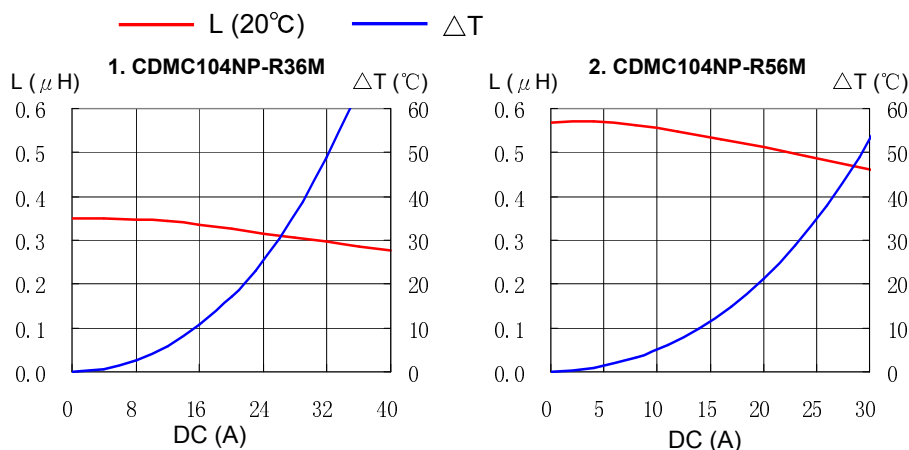
※2. Saturation current: The value of D.C. current when the inductance decreases to 80% of it's nominal value.

※3. Temperature rise current: The value of D.C. current when the temperature rise is $\Delta t = 40^\circ\text{C}$ ($T_a = 20^\circ\text{C}$).

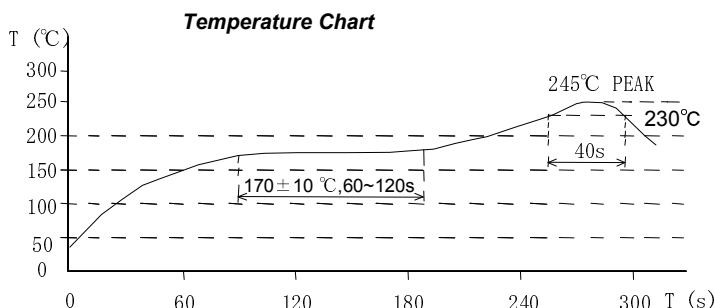
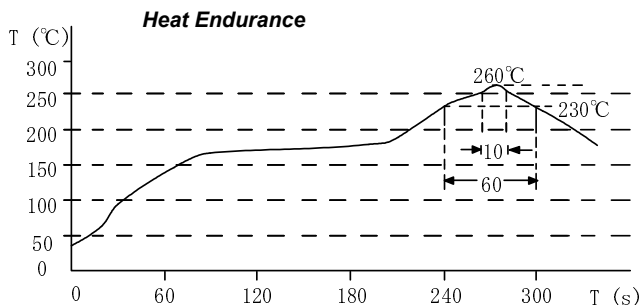
SMD Power Inductor CDMC104



Saturation Current & Temperature Rise Graph



Solder Reflow Condition



Please refer to the sales offices on our website - <http://www.sumida.com>

Hong Kong

Tel. +852-2880-6781
 FAX. +852-2565-9600
sales@hk.sumida.com

Saitama(Japan)

Tel. +81-48-691-7300
 FAX. +81-48-691-7340
sales@jp.sumida.com

Chicago

Tel. +1-847-545-6700
 FAX. +1-847-545-6720
sales@us.sumida.com

Shanghai

Tel. +86-21-5836-3299
 FAX. +86-21-5836-3266
shanghai.sales@cn.sumida.com

Seoul

Tel. +82-2-6237-0777
 FAX. +82-2-6237-0778
sales@kr.sumida.com

Oberzell

Tel. +49-8591-937-0
 FAX. +49-8591-937-103
contact@eu.sumida.com

Shenzhen

Tel. +86-755-8291-0228
 FAX. +86-755-8291-0338
shenzhen.sales@cn.sumida.com

Singapore

Tel. +65-6296-3388
 FAX. +65-6841-4426
sales@sg.sumida.com

Neumarkt

Tel. +49-9181-4509-110
 FAX. +49-9181-4509-310
infocomp@eu.sumida.com

Taipei

Tel. +886-2-8751-2737
 FAX. +886-2-8751-2738
sales@tw.sumida.com

San Jose

Tel. +1-408-321-9660
 FAX. +1-408-321-9308
sales@us.sumida.com