

Excellent Integrated System Limited

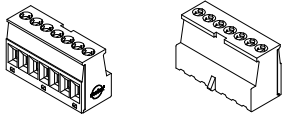
Stocking Distributor

Click to view price, real time Inventory, Delivery & Lifecycle Information:

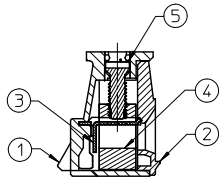
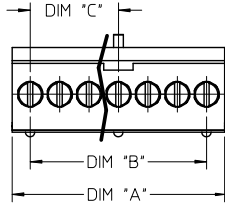
[Molex Connector Corporation](#)
[0394840002](#)

For any questions, you can email us directly:

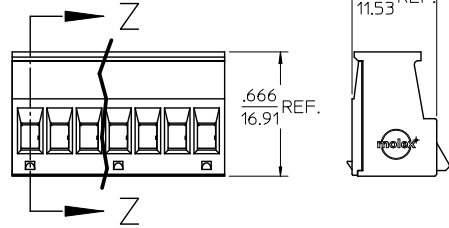
sales@integrated-circuit.com



REF. P/N 394840007 SHOWN



SECTION Z-Z



NOTES:

1. MATERIALS: SEE CHART.
 2. FINISHES: SEE CHART.
 3. PRODUCT SPECIFICATION: PS-39484-001
 4. PACKAGING SPECIFICATION: PK-39482-001
 5. MATES WITH TIN PLATED SERIES 39485 HEADER ASSEMBLIES.
 6. ALL DIMENSIONS ARE REFERENCE.
 7. ASSEMBLY IS ROHS COMPLIANT BY EXEMPTION.
- COMPONENTS MARKED WITH AN ASTERISK (*) ARE ROHS COMPLIANT BY EXEMPTION, ALL OTHERS ARE ROHS COMPLIANT.

| 39484 | | | | |
|--------------|----------------------------|-------------|-------------|-------------|
| CIRCUIT SIZE | PLUG ASSEMBLY MATERIAL NO. | DIM "A" | DIM "B" | DIM "C" |
| 2 | 39484-0002 | .351/8.92 | .158/4.00 | .000/0.00 |
| 3 | 39484-0003 | .508/12.90 | .315/8.00 | .000/0.00 |
| 4 | 39484-0004 | .666/16.92 | .473/12.00 | .158/4.00 |
| 5 | 39484-0005 | .823/20.90 | .630/16.00 | .315/8.00 |
| 6 | 39484-0006 | .981/24.92 | .788/20.00 | .315/8.00 |
| 7 | 39484-0007 | 1.138/28.91 | .945/24.00 | .473/12.00 |
| 8 | 39484-0008 | 1.296/32.92 | 1.103/28.00 | .473/12.00 |
| 9 | 39484-0009 | 1.453/36.91 | 1.260/32.00 | .630/16.00 |
| 10 | 39484-0010 | 1.611/40.92 | 1.418/36.00 | .630/16.00 |
| 11 | 39484-0011 | 1.768/44.91 | 1.575/40.00 | .788/20.00 |
| 12 | 39484-0012 | 1.926/48.92 | 1.733/44.00 | .788/20.00 |
| 13 | 39484-0013 | 2.083/52.91 | 1.890/48.00 | .945/24.00 |
| 14 | 39484-0014 | 2.241/56.92 | 2.048/52.00 | .945/24.00 |
| 15 | 39484-0015 | 2.398/60.78 | 2.205/56.00 | 1.103/28.00 |
| 16 | 39484-0016 | 2.556/64.92 | 2.363/60.00 | 1.103/28.00 |
| 17 | 39484-0017 | 2.713/68.91 | 2.520/64.00 | 1.260/32.00 |
| 18 | 39484-0018 | 2.871/72.92 | 2.678/68.00 | 1.260/32.00 |
| 19 | 39484-0019 | 3.028/76.91 | 2.835/72.00 | 1.418/36.00 |
| 20 | 39484-0020 | 3.186/80.92 | 2.993/76.00 | 1.418/36.00 |
| 21 | 39484-0021 | 3.343/84.91 | 3.150/80.00 | 1.575/40.00 |
| 22 | 39484-0022 | 3.501/88.93 | 3.308/84.00 | 1.575/40.00 |
| 23 | 39484-0023 | 3.658/92.91 | 3.465/88.00 | 1.733/44.00 |
| 24 | 39484-0024 | 3.816/96.93 | 3.623/92.00 | 1.733/44.00 |

| ITEM # | QTY. | DESCRIPTION | MATERIAL & FINISH |
|--------|------|-------------|-------------------------------------|
| 5 | XX | SCREW | STEEL, NICKEL PLATED |
| 4 | XX | CAGE (*) | COPPER ALLOY, NICKEL PLATED |
| 3 | XX | TERMINAL | COPPER ALLOY, 100µ" TIN PLATED |
| 2 | 1 | COVER | GLASS FILLED POLYAMIDE 6T/66, BLACK |
| 1 | 1 | BODY | GLASS FILLED POLYAMIDE 6T/66, BLACK |

| | | | | | | | |
|--|---|--|-----------------|--|--------------|--|--|
| REVD NOTES: TB WAS MAP EC NO: WNA2012-0110 DRWINSTONE 2011/08/19 CHKDK-JOZNIK 2011/11/23 APPRETTIUS 2011/11/23 | QUALITY SYMBOLS | GENERAL TOLERANCES (UNLESS SPECIFIED) | DIMENSION STYLE | SCALE | DESIGN UNITS | THIRD ANGLE PROJECTION | |
| | ▽=0 ▽=0 | mm INCH 4 PLACES ± --- ± --- 3 PLACES ± --- ± .015 2 PLACES ± 0.38 ± --- 1 PLACE ± --- ± --- ANGULAR ± 1° | IN/MM | 2:1 | INCH | DRAWN BY C. YORK DATE 2008/05/21 CHECKED BY R. DEROSS DATE 2008/05/21 APPROVED BY R. DEROSS DATE 2008/05/21 MATERIAL NO. SEE CHART DOCUMENT NO. SD-39484-001 | |
| | DRAFT WHERE APPLICABLE MUST REMAIN WITHIN DIMENSIONS | | | TITLE 4.00MM PLUG ASSEMBLY TIN PLATING MOLEX INCORPORATED SHEET NO. 1 OF 1 | | | |
| | THIS DRAWING CONTAINS INFORMATION THAT IS PROPRIETARY TO MOLEX INCORPORATED AND SHOULD NOT BE USED WITHOUT WRITTEN PERMISSION | | | | | | |