

## Excellent Integrated System Limited

Stocking Distributor

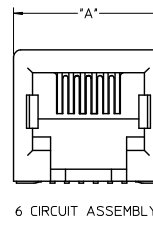
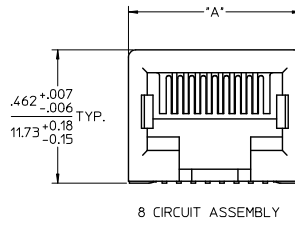
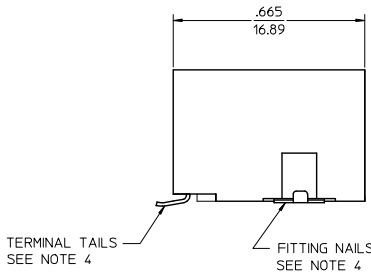
Click to view price, real time Inventory, Delivery & Lifecycle Information:

[Molex Connector Corporation](#)

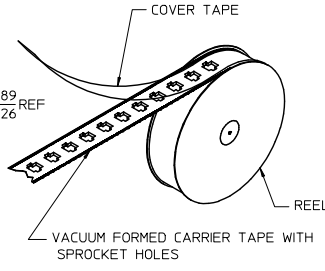
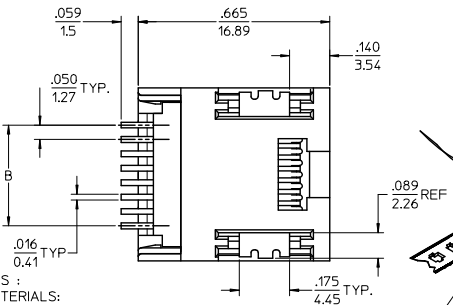
[0441440009](#)

For any questions, you can email us directly:

[sales@integrated-circuit.com](mailto:sales@integrated-circuit.com)



HOUSING SIZE	CIRCUIT SIZE	DIM. A	DIM. B
6	6	.520 (13.21)	.250 (6.35)
6	4	.520 (13.21)	.150 (3.81)
6	2	.520 (13.21)	.050 (1.27)
8	8	.600 (15.24)	.350 (8.89)
8	6	.600 (15.24)	.250 (6.35)

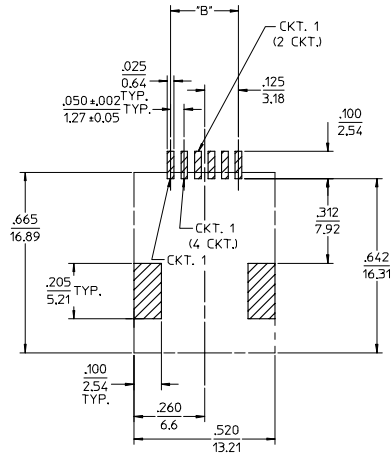


TAPE AND REEL PACKAGING

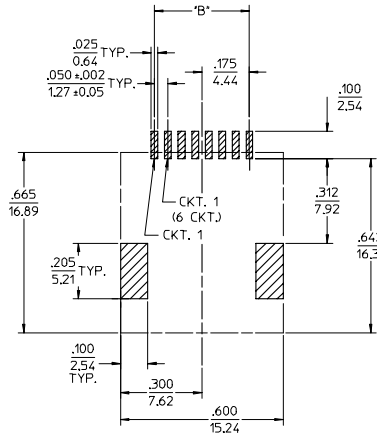
ASSEMBLY ITEM NO.	CONNECTOR SIZE	CIRCUIT SIZE	TERMINAL PLATING	TAPE & REEL PACKAGING No.	VOIDED CIRCUITS	HOUSING COLOR
44144-0001	8	4	A	PK-70873-7002	NA	BLACK
44144-0002	8	6	A	PK-70873-7002		
44144-0003	8	8	A	PK-70873-7002		
44144-0004	6	4	A	PK-70873-7001		
44144-0005	6	6	A	PK-70873-7001		
44144-0006	8	4	B	PK-70873-7002		
44144-0007	8	6	B	PK-70873-7002		
44144-0008	8	8	B	PK-70873-7002		
44144-0009	6	4	B	PK-70873-7001		
44144-0010	6	6	B	PK-70873-7001		
44144-0011	8	4	C	PK-70873-7002		
44144-0012	8	6	C	PK-70873-7002		
44144-0013	8	8	C	PK-70873-7002		
44144-0014	6	4	C	PK-70873-7001		
44144-0015	6	6	C	PK-70873-7001	NA	
44144-0016	8	4	C	PK-70873-7001	2,3,6,7	
44144-0017	6	2	A	PK-70873-7001	NA	
44144-0018	6	2	B	PK-70873-7001		
44144-0019	6	2	C	PK-70873-7001		
44144-0023	8	2	A	PK-70873-7002	NA	

- NOTES :
- MATERIALS:
    - HOUSING: NYLON, GLASS-FILLED, UL94V-0. COLOR - SEE CHART
    - TERMINALS: PHOSPHOR BRONZE, .012/(0.30) THICK
    - FITTING NAILS: BRASS ALLOY, .010/(0.25) THICK
  - FINISH:
    - TERMINALS:
      - (A) SELECT GOLD IN CONTACT AREA: .000050/(0.00127) MIN., \*SELECT MATTE TIN IN PC TAIL AREA: .000100/(0.00254) MIN., WITH OVERALL NICKEL UNDERPLATE: .000050/(0.00127) MIN.
      - (B) SELECT GOLD IN CONTACT AREA: .000030/(0.00076) MIN., \*SELECT MATTE TIN IN PC TAIL AREA: .000100/(0.00254) MIN., WITH OVERALL NICKEL UNDERPLATE: .000050/(0.00127) MIN.
      - (C) SELECT GOLD IN CONTACT AREA: .000015/(0.00038) MIN., \*SELECT MATTE TIN IN PC TAIL AREA: .000100/(0.00254) MIN., WITH OVERALL NICKEL UNDERPLATE: .000050/(0.00127) MIN.
    - FITTING NAILS:
      - \*100 MICRONS MATTE TIN OVER 50 MICRONS NICKEL UNDERPLATE
      - \*THE PRIMARY SHIPPING CARTON WILL BE LABELED 'ELV AND ROHS COMPLIANT' CARTONS WITHOUT THIS LABEL MAY CONTAIN PRODUCT WITH TIN-LEAD IN THE PC TAIL AND/OR FITTING NAILS.
  - PRODUCT SPECIFICATION: PS-43743-001
  - COPLANARITY SPECIFICATION: WITH THE MODULAR JACK SITTING ON A LEVEL SURFACE, THE MAXIMUM GAP BETWEEN THE LEVEL SURFACE AND ALL TERMINAL TAILS AND BOTH FITTING NAILS IS .006/(0.15).
  - FOR ASSEMBLIES HAVING VOIDED CIRCUITS, THE TAIL PORTION IS CUT AND REMOVED, THE MATING PORTION OF THE TERMINAL REMAINS INTACT.
  - CONVECTION SOLDERING TECHNOLOGY SHOULD BE USED WHEN GANGING MODULAR JACKS WITH INBOARD NAILS SIDE-BY-SIDE.
  - THIS PART CONFORMS TO CLASS B REQUIREMENTS OF COSMETIC SPECIFICATION PS-45499-002.

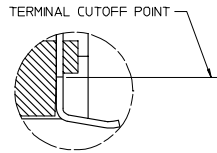
REVISED NOTES EC NO: UCP2009-1244 DRAWN: KLOSTER ER 2008/12/10 CHKD: JRELL 2008/12/10 APPR: SMITH 2008/12/10 H4	QUALITY SYMBOLS ▽=0 ▽=0	GENERAL TOLERANCES (UNLESS SPECIFIED) mm INCH 4 PLACES ± .15 ± .006 3 PLACES ± .10 ± .004 2 PLACES ± .25 ± .010 1 PLACE ± .38 ± .015 ANGULAR ± 1/2°	DIMENSION STYLE IN/MM DRAWN BY: MUELLER DATE: 98/03/13 CHECKED BY: ROBERTS DATE: 98/03/16 APPROVED BY: R EDGLEY DATE: 98/03/17	SCALE: 4:1 DESIGN UNITS: INCH THIRD ANGLE PROJECTION	TITLE: 4, 6, 8 CIRCUIT SMT MODULAR JACK W/ FLUSH FITTING NAILS MOLEX MOLEX INCORPORATED
		DRAFT WHERE APPLICABLE MUST REMAIN WITHIN DIMENSIONS	MATERIAL NO. SEE CHART SIZE: C	DOCUMENT NO. SD-44144-001 SHEET NO. 1 OF 2	THIS DRAWING CONTAINS INFORMATION THAT IS PROPRIETARY TO MOLEX INCORPORATED AND SHOULD NOT BE USED WITHOUT WRITTEN PERMISSION



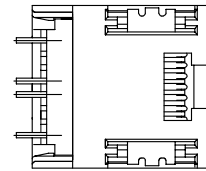
PCB LAYOUT FOR CONNECTOR SIZE 6  
(COMPONENT SIDE OF BOARD)



PCB LAYOUT FOR CONNECTOR SIZE 8  
(COMPONENT SIDE OF BOARD)



VIEW SHOWING TYPICAL TERMINAL  
CUTOFF OF TAIL (SEE NOTE 5) FOR VOIDED CIRCUITS.



TYPICAL VIEW SHOWING VOIDED CIRCUIT  
44144-0016 SHOWN

SEE SHEET ONE IEC NO. UCP2004-0798 DRAWN:LSCHMIDT 2004/07/05 CHKD:LSCHMIDT 2004/07/05 APPR:FSMITH 2004/07/08	QUALITY SYMBOLS	GENERAL TOLERANCES (UNLESS SPECIFIED)	SCALE 4:1	DESIGN UNITS INCH	THIRD ANGLE PROJECTION	REVISE ON CAD ONLY
	▽-0 ▽-0	4 PLACES ±.005 ±.005 3 PLACES ±.010 ±.010 2 PLACES ±.025 ±.015 1 PLACE ±.038 ±.015 ANGULAR ±1/2°	DIMENSION STYLE IN/MM DRAWN BY DSTAMBAU DATE 00/04/07 CHECKED BY BWIRKUS DATE 00/04/07 APPROVED BY R EDGLEY DATE 00/04/07	TITLE	4, 6, 8 CIRCUIT SMT MODULAR JACK W/ FLUSH FITTING NAILS	MOLEX INCORPORATED
	DRAFT WHERE APPLICABLE MUST REMAIN WITHIN DIMENSIONS	MATERIAL NO. SEE CHART DOCUMENT NO. SD-44144-001 SHEET NO. 2 OF 2	THIS DRAWING CONTAINS INFORMATION THAT IS PROPRIETARY TO MOLEX INCORPORATED AND SHOULD NOT BE USED WITHOUT WRITTEN PERMISSION			
	REV					