

Excellent Integrated System Limited

Stocking Distributor

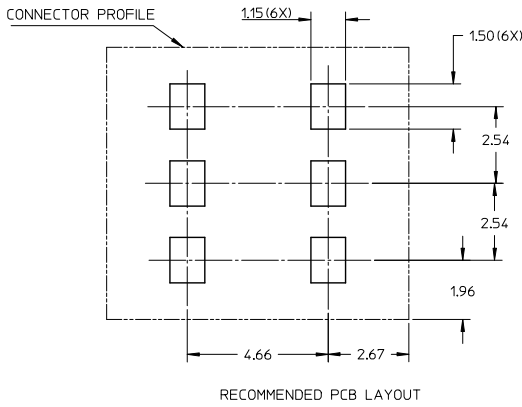
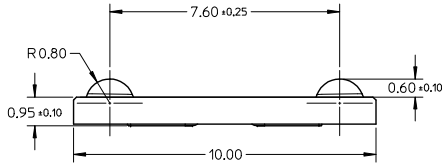
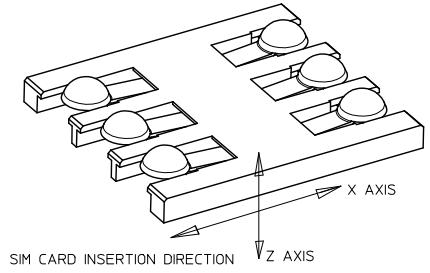
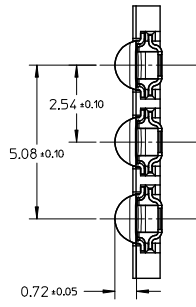
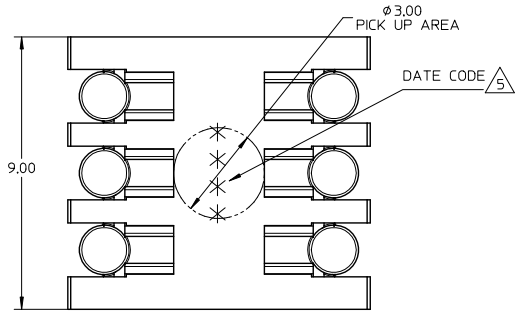
Click to view price, real time Inventory, Delivery & Lifecycle Information:

[Molex Connector Corporation](#)
[0475350001](#)

For any questions, you can email us directly:

sales@integrated-circuit.com

10 9 8 7 6 5 4 3 2 1



NOTE:

- 1.MATERIAL:
HOUSING: LCP, UL 94V-0, COLOR IS BLACK.
TERMINAL: COPPER ALLOY, THICKNESS IS 0.12mm.
- 2.FINISH:
TERMINAL:
CONTACT AREA: SELECTIVE 0.75 TO 1.25 MICRON GOLD .
SOLDER TAIL: 0.05 TO 0.125 MICRON GOLD FLASH.
UNDERPLATING ALL OVER 1.25 TO 3.75 MICRON NICKEL.
- 3.COPLANARITY: 0.1MM MAX. AMONG THESE TERMINAL SOLDER TAILS.
- 4.PRODUCT SPECIFICATION: PS-47535-***.
- 5.DATE CODE (4 DIGITS)

EXAMPLE	DATE	YEAR
DAY COUNTED FROM	2006/01/15	6015
FIRST DAY OF THE YEAR	2006/02/10	6041
YEAR	2007/03/10	7069

6. THIS PART 475350001 COMPLIANT TO RoHS DIRECTIVE 2002/95/EC AND ELV 2000/53/EC.

TERMINAL HT ADDED EC NO: S2014-0080 2013/07/18 DRW: NENG CHKD: JTAN02 2013/09/05 APPR: KHLIM 2013/09/09	QUALITY SYMBOLS	GENERAL TOLERANCES (UNLESS SPECIFIED)	DIMENSION STYLE	SCALE	DESIGN UNITS	THIRD ANGLE PROJECTION	
	$\nabla=0$ $\nabla=0$ $\nabla=0$	mm INCH 4 PLACES ± --- ± --- 3 PLACES ± --- ± --- 2 PLACES ± 0.13 ± --- 1 PLACE ± --- ± --- ANGULAR ± 1°	MM ONLY	NTS	METRIC	DRAWN BY: HPQIAN DATE: 2008/03/17 CHECKED BY: RZHANG DATE: 2008/03/17 APPROVED BY: KHLIM DATE: 2010/11/15	TITLE: EMERALD SIM CONNECTOR MOLEX INCORPORATED
	DRAFT WHERE APPLICABLE MUST REMAIN WITHIN DIMENSIONS	MATERIAL NO.: 475350001 SIZE: A3 THIS DRAWING CONTAINS INFORMATION THAT IS PROPRIETARY TO MOLEX INCORPORATED AND SHOULD NOT BE USED WITHOUT WRITTEN PERMISSION	DOCUMENT NO.: SD-47535-001 SHEET NO.: 1 OF 1				

9 8 7 6 5 4 3 2 1